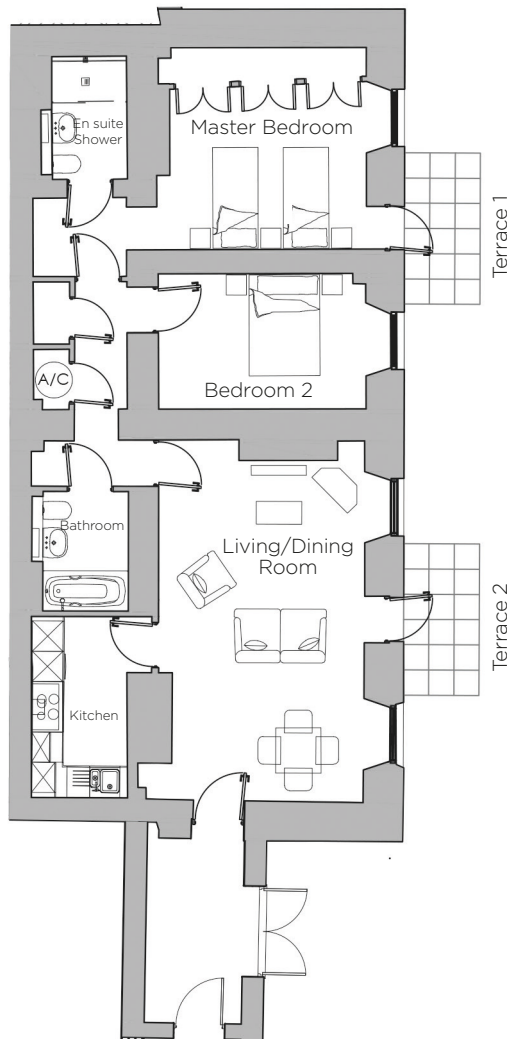


# Audley Ellerslie

6 Southlands  
Garden Level Apartment  
Plot 10

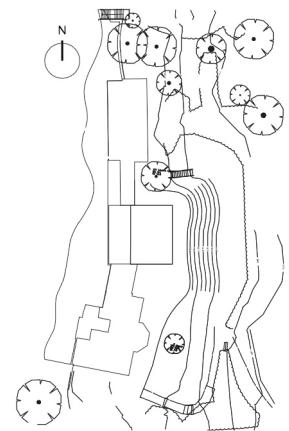


Internal Measurements	Metric (m)	Imperial (ft)
Living/Dining Room	7.16 x 4.10	23'6" x 13'5"
Kitchen	3.60 x 1.91	11'10" x 6'3"
Master Bedroom	3.89 x 3.24	12'9" x 10'7"
Bedroom 2	4.13 x 2.69	13'7" x 8'10"
Terrace 1 (approx.)	3.00 x 1.50	9'10" x 4'11"
Terrace 2 (approx.)	3.00 x 1.50	9'10" x 4'11"

Total Area 1146 sq ft

Audley Ellerslie  
Abbey Road, Malvern, Worcestershire WR14 3HL  
01684 438 400  
www.audleyvillages.co.uk

Built-in wardrobes in bedrooms have not been included in the overall dimensions.  
Maximum measurements shown. These pages are intended for marketing purposes only.  
Designs vary according to plot and all details should be checked at the Sales Office.  
913021



# Audley Ellerslie

6 Southlands  
Garden Level Apartment  
Plot 10



## 2 bedroom, garden level apartment

This characterful two bedroom apartment is beautifully situated on the garden level of the Grade II\* listed Southlands property. The entrance hall has access to full patio with French doors.

With two east-facing private terraces accessed from the master bedroom and living/dining room, it's the ideal home to enjoy the great outdoors and the stunning scenery.

Property specifications:

- Two east-facing terraces
- Stunning Worcestershire countryside views
- Large living/dining room with feature windows and terrace access
- The master bedroom has access to terrace, triple fitted wardrobes and en suite
- Luxury Siematic kitchen with integrated appliances
- Good size second bedroom
- Separate Villeroy & Boch bathroom

Audley Ellerslie  
Abbey Road, Malvern, Worcestershire WR14 3HL  
01684 438 400  
[www.audleyvillages.co.uk](http://www.audleyvillages.co.uk)

