

# Audley Ellerslie

6 Mason Court  
First Floor Apartment  
Plot 45



## Internal Measurements

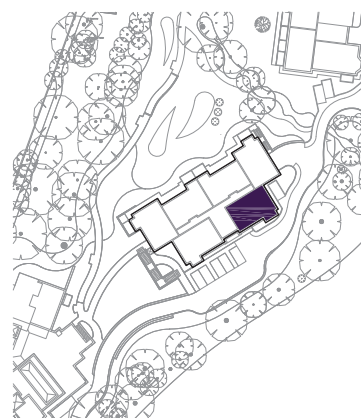
## Metric (m)

## Imperial (ft)

Living/Dining Room  
Kitchen  
Master Bedroom  
Bedroom 2

3.91 x 5.67  
3.91 x 2.74  
3.08 x 4.47  
3.34 x 3.04

12'10" x 18'7"  
12'10" x 9'0"  
10'1" x 14'8"  
11'0" x 10'0"



Audley Ellerslie  
Abbey Road, Malvern, Worcestershire WR14 3HL  
01684 438 400  
[www.audleyvillages.co.uk](http://www.audleyvillages.co.uk)

These floorplans are illustrative and for marketing purposes only. Maximum measurements are shown. Wardrobes not included in the overall room dimensions. Furniture shown to illustrate possible room layouts and not included in sale. Designs vary according to plot. All details should be checked at the Sales Office.

25 September 2017



# Audley Ellerslie

6 Mason Court  
First Floor Apartment  
Plot 45



## 2 bedroom, first floor apartment

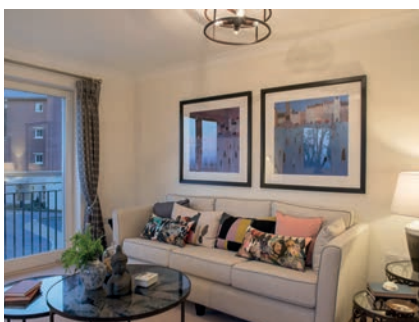
The Master bedroom in this first floor, two bedroom apartment has double fitted wardrobes and en suite shower room with Villeroy & Boch sanitaryware.

The dual-aspect living/dining room has a south-east facing Juliet balcony and space for a dining table and chairs.

The apartment has lift access and undercroft parking is available.

Property specifications:

- Juliet balcony in living/dining room
- Second double bedroom
- SieMatic kitchen with integrated appliances



Photos for illustration purposes only

Audley Ellerslie  
Abbey Road, Malvern, Worcestershire WR14 3HL  
01684 438 400  
[www.audleyvillages.co.uk](http://www.audleyvillages.co.uk)

