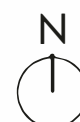
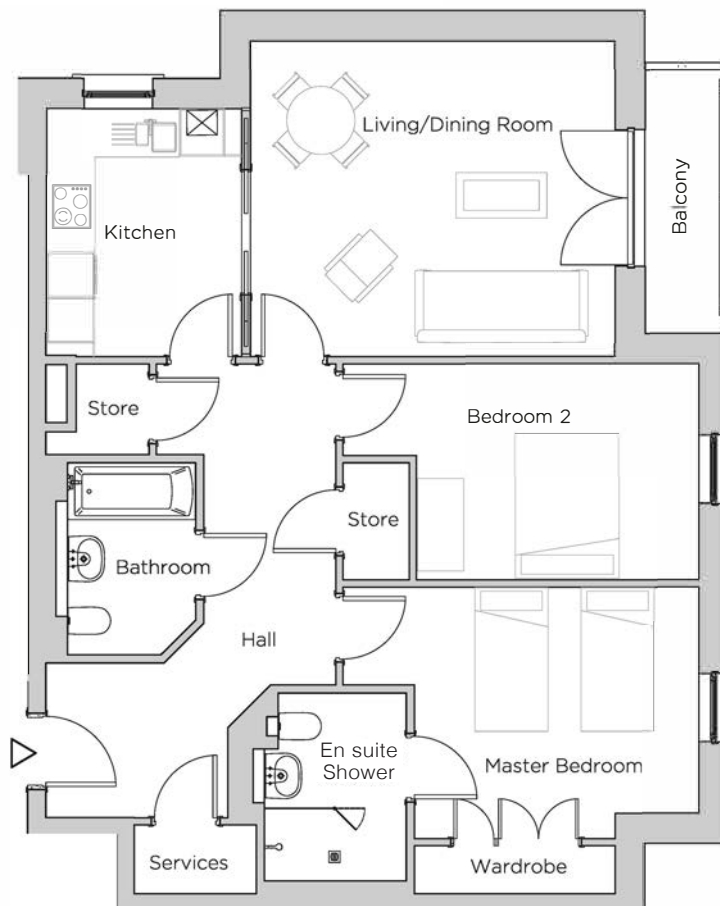
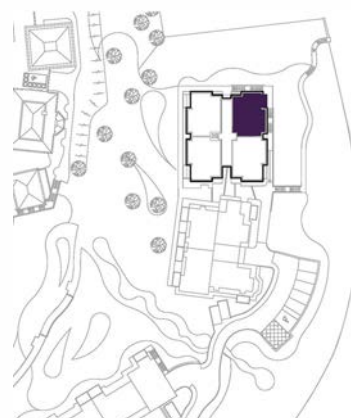


# Audley Ellerslie

5 Vines Court  
 First Floor Apartment  
 Plot 88



Internal Measurements	Metric (m)	Imperial (ft)
Living/Dining Room	4.81 x 4.17	15'10" x 13'8"
Kitchen	3.28 x 2.57	10'9" x 8'5"
Master Bedroom	3.76 x 3.32	12'4" x 10'11"
Bedroom 2	3.74 x 2.83	12'3" x 9'4"
Balcony	3.48 x 0.98	11'5" x 3'3"



Audley Ellerslie  
 Abbey Road, Malvern, Worcestershire WR14 3HL  
 01684 438 400  
[www.audleyvillages.co.uk](http://www.audleyvillages.co.uk)

These floorplans are illustrative and for marketing purposes only. Maximum measurements are shown. Wardrobes not included in the overall room dimensions. Furniture shown to illustrate possible room layouts and not included in sale. Designs vary according to plot. All details should be checked at the Sales Office.

# Audley Ellerslie

5 Vines Court  
First Floor Apartment  
Plot 88



## 2 bedroom, first floor apartment

A first floor, two bedroom apartment with an east-facing balcony with amazing Malvern views.

The Master bedroom has double fitted wardrobes and en suite shower room with Villeroy & Boch sanitaryware. The kitchen has glazed pocket sliding doors in to the dual-aspect living/dining room for optional open plan living.

Property specifications:

- SieMatic kitchen with integrated appliances
- Guest bathroom
- Balcony with east-facing countryside views from the living/dining room
- Second double bedroom

Audley Ellerslie  
Abbey Road, Malvern, Worcestershire WR14 3HL  
01684 438 400  
[www.audleyvillages.co.uk](http://www.audleyvillages.co.uk)

