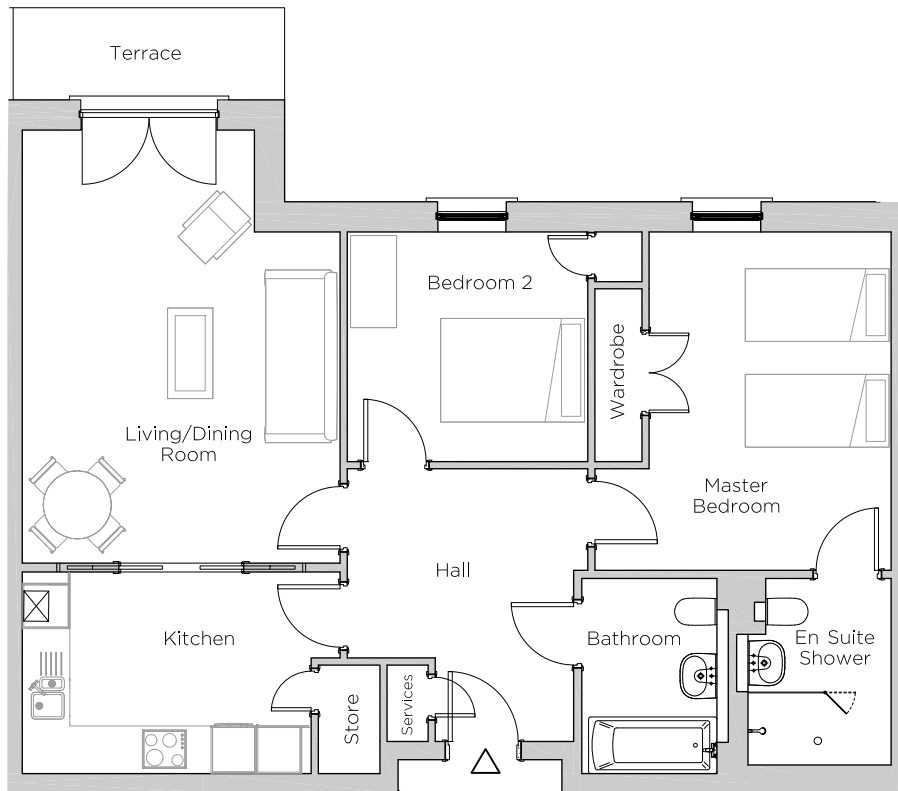


Audley Ellerslie

4 Mason Court
Plot 43

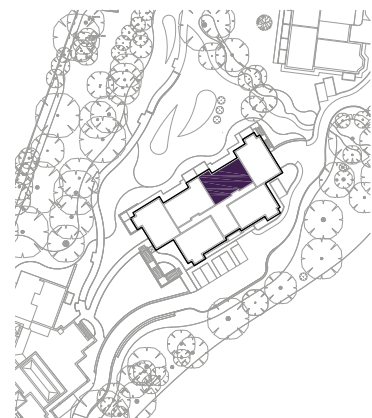


Internal Measurements

Metric (m)

Imperial (ft)

Living/Dining Room	4.21 x 5.73	13'10" x 18'10"
Kitchen	3.82 x 2.67	12'7" x 8'9"
Master Bedroom	3.20 x 4.48	10'6" x 14'8"
Bedroom 2	3.18 x 3.04	10'5" x 10'0"
Terrace	3.59 x 1.22	11'10" x 4'0"



Audley Ellerslie
Abbey Road, Malvern, Worcestershire WR14 3HL
01684 438 400
www.audleyvillages.co.uk

These floorplans are illustrative and for marketing purposes only. Maximum measurements are shown. Wardrobes not included in the overall room dimensions. Furniture shown to illustrate possible room layouts and not included in sale. Designs vary according to plot. All details should be checked at the Sales Office.

25 September 2017



Audley Ellerslie

4 Mason Court
Plot 43



2 bedroom, ground floor apartment

This two double bedroom apartment is located in Mason Court which features undercroft parking.

The living/dining room has patio doors out on to a secluded terrace and the master bedroom has double fitted wardrobes and an en suite shower room.

The kitchen has glazed pocket sliding doors in to the lounge.

Property specifications:

- Fully equipped SieMatic kitchen with integrated appliances
- Undercroft parking
- Option for open plan living/dining room
- Lift access

Audley Ellerslie
Abbey Road, Malvern, Worcestershire WR14 3HL
01684 438 400
www.audleyvillages.co.uk

