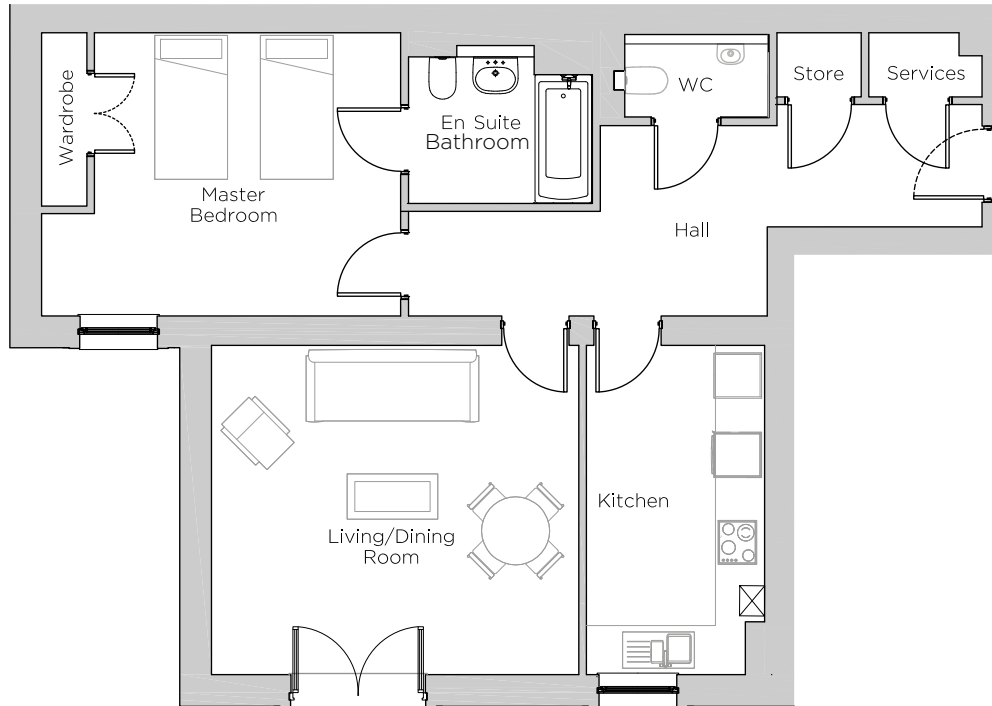


Audley Ellerslie

4 Adkins Court
Plot 34



Internal Measurements

Metric (m)

Imperial (ft)

Living/Dining Room

4.86 x 4.36

16'0" x 14'4"

Kitchen

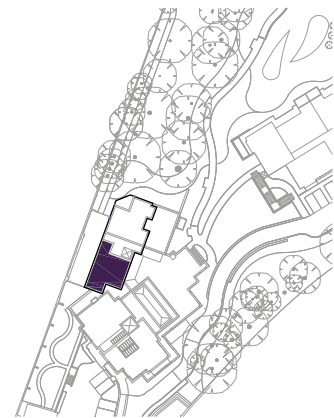
2.36 x 4.36

7'9" x 14'4"

Master Bedroom

3.72 x 3.32

12'3" x 10'11"



Audley Ellerslie
Abbey Road, Malvern, Worcestershire WR14 3HL
01684 438 400
www.audleyvillages.co.uk

These floorplans are illustrative and for marketing purposes only. Maximum measurements are shown. Wardrobes not included in the overall room dimensions. Furniture shown to illustrate possible room layouts and not included in sale. Designs vary according to plot. All details should be checked at the Sales Office.

25 September 2017



Audley Ellerslie

4 Adkins Court
Plot 34



1 bedroom, first floor apartment

This spacious one bedroom, first floor apartment has an en suite bathroom in the master bedroom with a separate WC off the hallway.

The living room has space for a dining table, with an east-facing Juliet balcony with views over the Severn Valley.

Located in Adkins Court, adjacent to the leisure facilities and restaurant.

Property specifications:

- East-facing views
- Close to the main facilities
- Villeroy & Boch sanitaryware and elegant Hansgrohe fittings
- Lift access

Audley Ellerslie
Abbey Road, Malvern, Worcestershire WR14 3HL
01684 438 400
www.audleyvillages.co.uk

