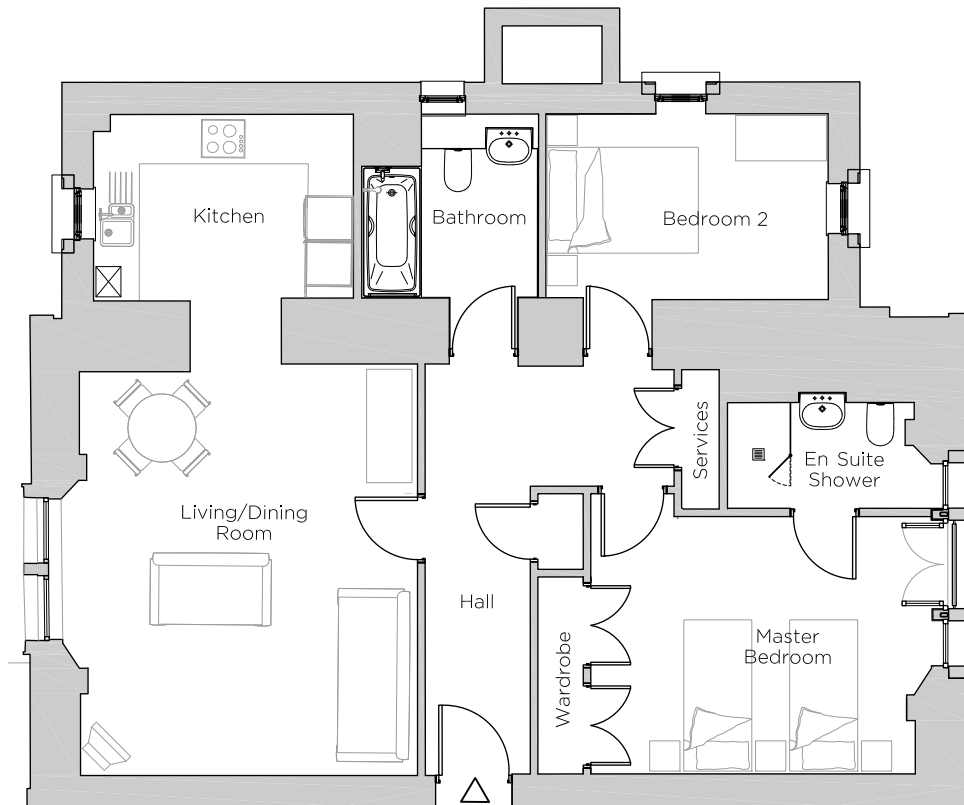


# Audley Ellerslie

3 Lind House  
Plot 99

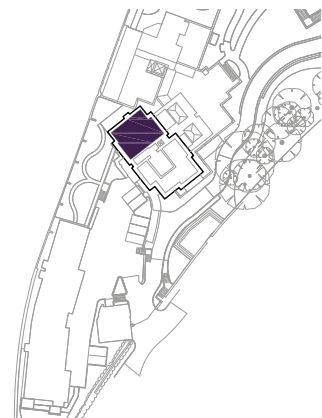


## Internal Measurements

## Metric (m)

## Imperial (ft)

Living/Dining Room	4.47 x 5.34	14'8" x 17'6"
Kitchen	3.48 x 2.45	11'5" x 8'1"
Master Bedroom	4.29 x 3.40	14'1" x 11'2"
Bedroom 2	3.92 x 2.43	12'10" x 8'0"



Audley Ellerslie  
Abbey Road, Malvern, Worcestershire WR14 3HL  
01684 438 400  
[www.audleyvillages.co.uk](http://www.audleyvillages.co.uk)

These floorplans are illustrative and for marketing purposes only. Maximum measurements are shown. Wardrobes not included in the overall room dimensions. Furniture shown to illustrate possible room layouts and not included in sale. Designs vary according to plot. All details should be checked at the Sales Office.

22 September 2017



# Audley Ellerslie

3 Lind House  
Plot 99



## 2 bedroom, second floor apartment

This two double bedroom apartment is in Lind House, the unique refurbished period building and home to the restaurant and leisure facilities.

The spacious south-facing living/dining room leads to a luxury fully fitted SieMatic kitchen with Corian worktops.

The master bedroom has two built-in wardrobes and an en suite shower room and large windows overlooking the village.

Property specifications:

- Located in the original period building
- Luxury Villeroy & Boch bathroom and en suite with elegant Hansgrohe fittings
- Lift access

Audley Ellerslie  
Abbey Road, Malvern, Worcestershire WR14 3HL  
01684 438 400  
[www.audleyvillages.co.uk](http://www.audleyvillages.co.uk)

