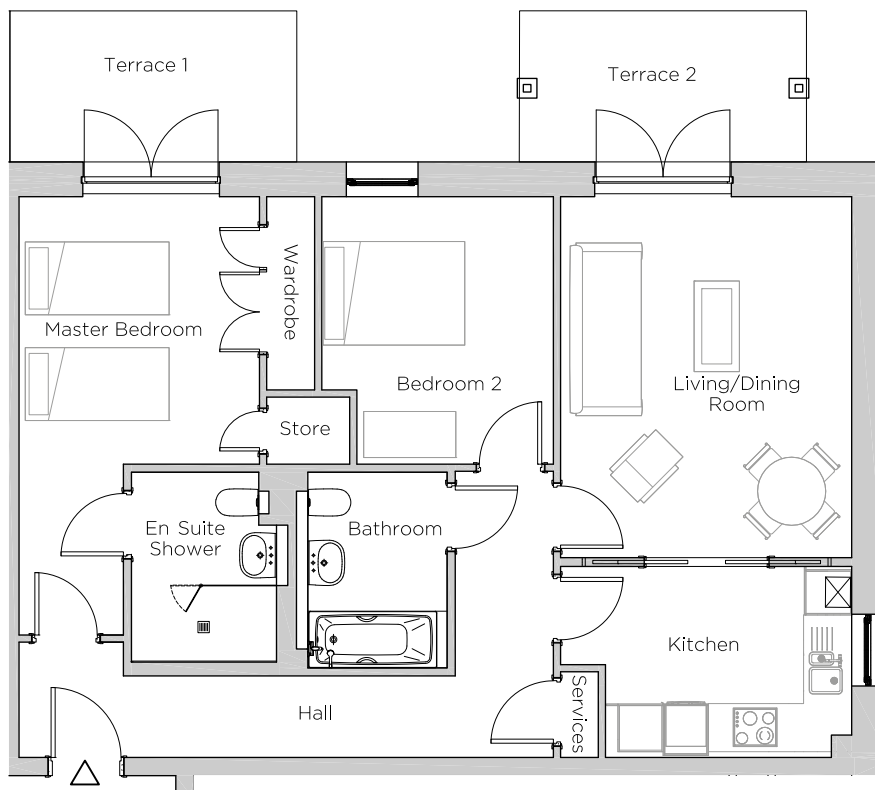


# Audley Ellerslie

3 Austin Court  
Plot 63

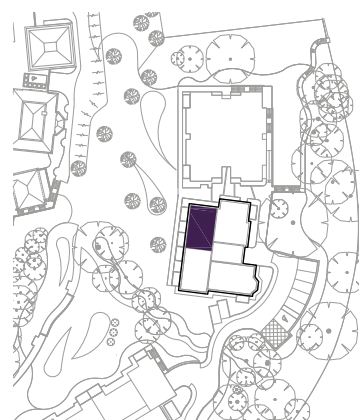


## Internal Measurements

## Metric (m)

## Imperial (ft)

Living/Dining Room	4.78 x 3.85	15'8" x 12'8"
Kitchen	3.26 x 2.53	10'8" x 8'4"
Master Bedroom	3.54 x 3.18	11'7" x 10'5"
Bedroom 2	3.54 x 3.07	11'7" x 10'1"
Terrace 1	3.80 x 2.00	12'6" x 6'7"
Terrace 2	3.80 x 2.00	12'6" x 6'7"



Audley Ellerslie  
Abbey Road, Malvern, Worcestershire WR14 3HL  
01684 438 400  
[www.audleyvillages.co.uk](http://www.audleyvillages.co.uk)

These floorplans are illustrative and for marketing purposes only. Maximum measurements are shown. Wardrobes not included in the overall room dimensions. Furniture shown to illustrate possible room layouts and not included in sale. Designs vary according to plot. All details should be checked at the Sales Office.

25 September 2017



# Audley Ellerslie

3 Austin Court  
Plot 63



## 2 bedroom, ground floor apartment

This two bedroom, ground floor apartment has a master bedroom with patio doors out on to a secluded terrace, double built-in wardrobes and an en suite shower room.

The kitchen has glazed pocket sliding doors in to the living room which has space for a dining table and chairs and patio doors out on to a second terrace.

The apartment is on the ground floor of Austin Court, located towards the further end of the village.

Property specifications:

- Fully equipped SieMatic kitchen with integrated appliances
- Secluded outdoor space
- Glazed pocket doors for optional open plan living

Audley Ellerslie  
Abbey Road, Malvern, Worcestershire WR14 3HL  
01684 438 400  
[www.audleyvillages.co.uk](http://www.audleyvillages.co.uk)

