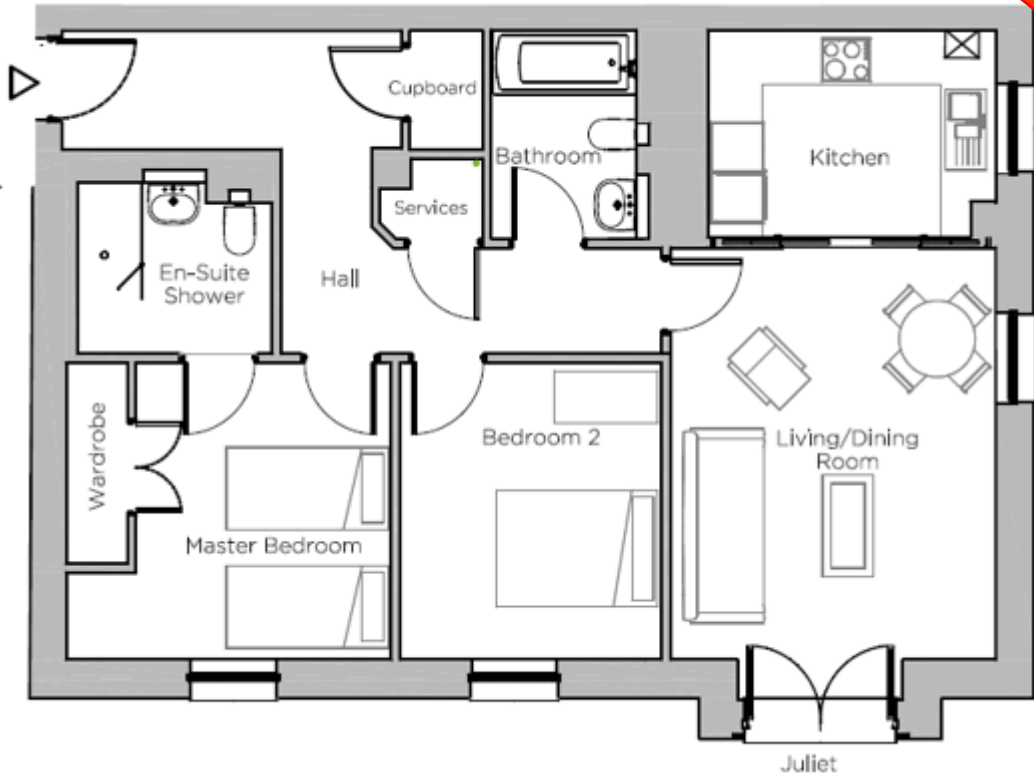


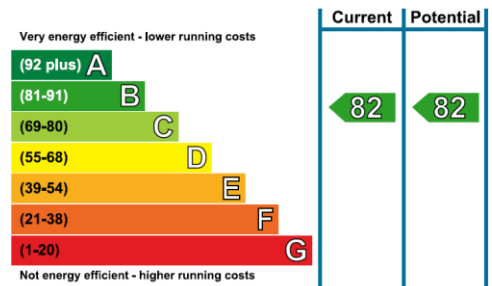
# Audley Ellerslie

2 Adkins Court  
Two bedroom pre-owned ground floor apartment

12 MONTHS MMC  
FREE OF CHARGE\*

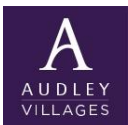


Internal Measurements	Metric (m)	Imperial (ft)
Living/Dining Room	3.84m x 4.85m	12'7" x 15'11"
Kitchen	3.40m x 2.44m	11'2" x 8'0"
Master Bedroom	3.01m x 3.50m	9'11" x 11'6"
Bedroom 2	3.08m x 3.50m	10'1" x 11'6"
Total Sq.ft 884		



Audley Ellerslie  
Abbey Road, Malvern, Worcestershire WR14 3HL  
01684 438 400 [www.audleyvillages.co.uk](http://www.audleyvillages.co.uk)

Built in wardrobes in bedrooms have not been included in the overall dimensions.  
Maximum measurements shown. These pages are intended for marketing purposes only.  
Designs vary according to plot and all details should be checked at the Sales office.  
Sept 2017



# Audley Ellerslie

2 Adkins Court

Two bedroom pre-owned ground floor apartment



## Two bedroom ground floor apartment



This delightful two bedroom apartment has a dual aspect living/dining room and enjoys lovely views from the Juliet balcony. There is a luxurious SieMatic kitchen with integrated Neff appliances and a family bathroom with Villeroy & Boch sanitaryware. The property offers two good sized bedrooms, including the master which is enhanced by fitted wardrobes and an en suite shower room.



## Property specifications

- Spacious living/dining room with a Juliet balcony
- SieMatic kitchen with integrated Neff appliances
- Master bedroom with an en suite shower room
- Car parking available - issued on a permit basis
- Close to the central village amenities

**£375,000** (other fees apply)

**\*Exchange and complete by the end of July 2021 to receive one years Monthly Management Charge for free.**



Monthly management fee £892.21  
Annual Ground Rent £500

Viewing by appointment with the sales office.

Audley Ellerslie  
Abbey Road, Malvern, Worcestershire WR14 3HL  
01684 438 400 [www.audleyvillages.co.uk](http://www.audleyvillages.co.uk)

