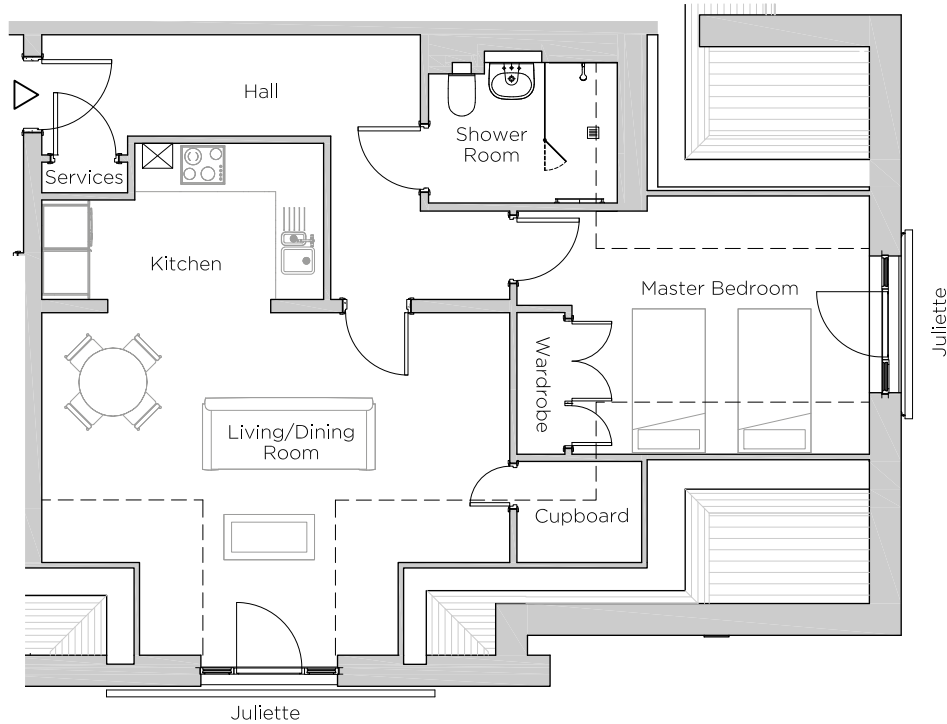


Audley Ellerslie

20 Austin Court
Fourth Floor Apartment
Plot 80



Internal Measurements

Metric (m)

Imperial (ft)

Living/Dining Room

6.19 x 4.52

20'4" x 14'10"

Kitchen

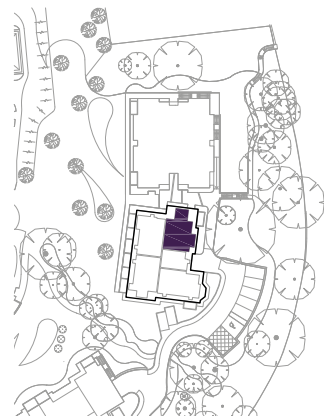
3.73 x 2.07

12'3" x 6'9"

Master Bedroom

3.93 x 3.39

12'11" x 11'2"



Audley Ellerslie
Abbey Road, Malvern, Worcestershire WR14 3HL
01684 438 400
www.audleyvillages.co.uk

These floorplans are illustrative and for marketing purposes only. Maximum measurements are shown. Wardrobes not included in the overall room dimensions. Furniture shown to illustrate possible room layouts and not included in sale. Designs vary according to plot. All details should be checked at the Sales Office.

Audley Ellerslie

20 Austin Court
Fourth Floor Apartment
Plot 80



1 bedroom fourth floor apartment

A fabulous one bedroom penthouse featuring high sloping ceilings. The apartment has an open plan kitchen/dining room with a large walk-in cupboard and space for a dining table. The living room has a Juliette balcony with views towards the backdrop of the Malvern hills.

Property specifications:

- Unique apartment with sloping ceilings located in the eaves of the building
- Open plan kitchen and living/dining room with Juliette balcony
- Master bedroom with fitted wardrobes and en-suite shower room
- Fully fitted SieMatic kitchen with Corian worktops

Audley Ellerslie
Abbey Road, Malvern, Worcestershire WR14 3HL
01684 438 400
www.audleyvillages.co.uk

