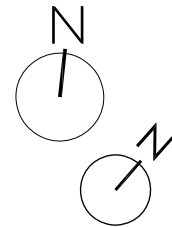
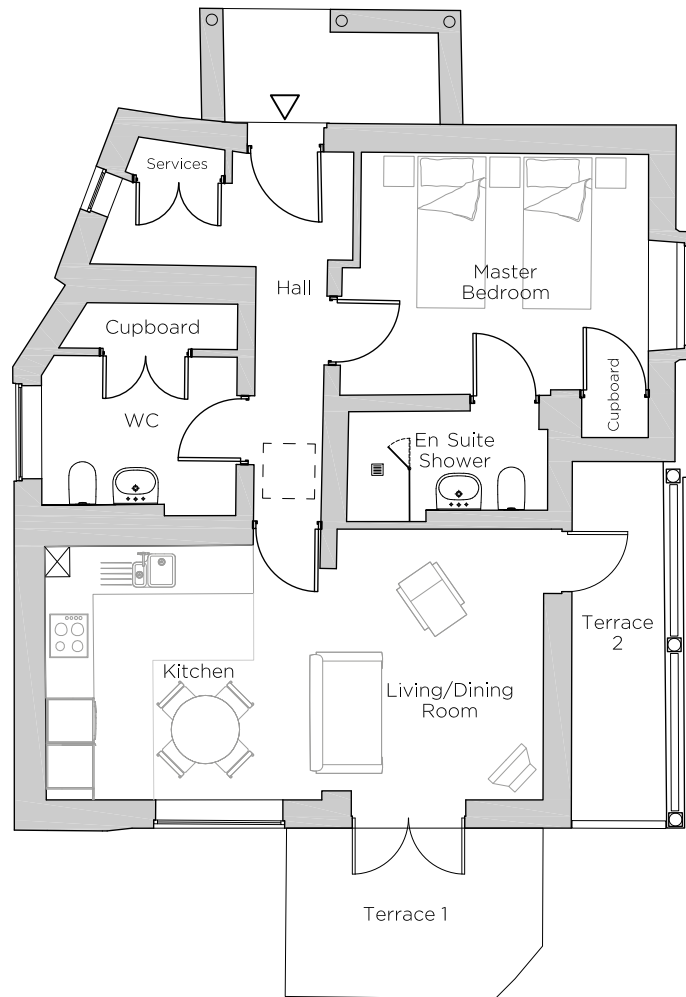


Audley Ellerslie

1 Ellerslie Drive
Plot 102



Internal Measurements

Metric (m)

Imperial (ft)

Living/Dining Room	3.83 x 3.57	12'7" x 11'9"
Kitchen	2.75 x 3.34	9'0" x 11'0"
Master Bedroom	3.79 x 3.21	12'5" x 10'6"
Terrace 1	3.39 x 2.22	11'1" x 7'4"
Terrace 2	1.26 x 4.74	4'2" x 15'7"



Audley Ellerslie
Abbey Road, Malvern, Worcestershire WR14 3HL
01684 438 400
www.audleyvillages.co.uk

These floorplans are illustrative and for marketing purposes only. Maximum measurements are shown. Wardrobes not included in the overall room dimensions. Furniture shown to illustrate possible room layouts and not included in sale. Designs vary according to plot. All details should be checked at the Sales Office.

Audley Ellerslie

1 Ellerslie Drive
Plot 102



1 bedroom cottage

This unique refurbished cottage is a single storey detached property, located at the entrance to the village, close to the restaurant and leisure facilities.

The open plan kitchen/living room has space for a dining table and patio doors to a south facing terrace and an east-facing balcony with views over the Severn Valley.

The cottage has a welcoming undercover porch at the entrance.

Property specifications:

- Sought-after original period cottage
- Bathroom and en suite with Villeroy & Boch sanitaryware and Hansgrohe fittings
- Parking available immediately outside
- Close to the main facilities

Audley Ellerslie
Abbey Road, Malvern, Worcestershire WR14 3HL
01684 438 400
www.audleyvillages.co.uk

