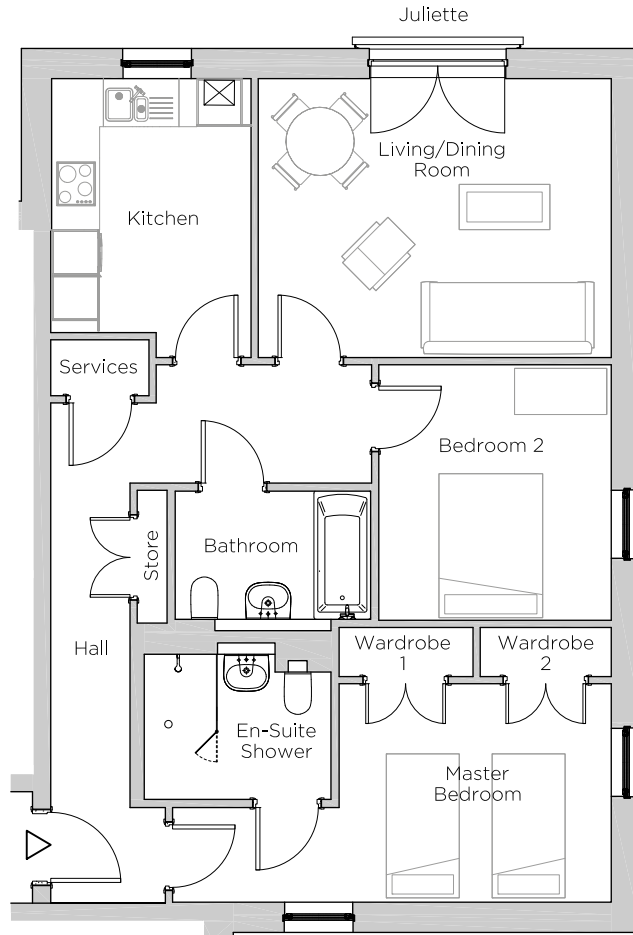


# Audley Ellerslie

17 Mason Court  
Third Floor Apartment  
Plot 56



## Internal Measurements

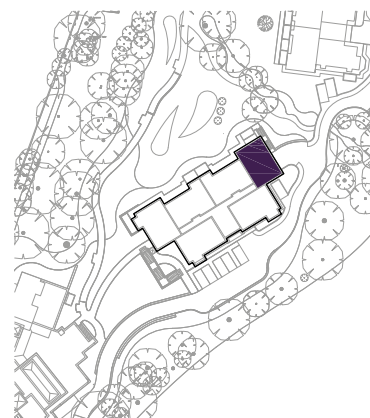
Living/Dining Room  
Kitchen  
Master Bedroom  
Bedroom 2

## Metric (m)

4.67 x 3.69  
2.64 x 3.36  
3.60 x 2.89  
3.07 x 3.38

## Imperial (ft)

15'4" x 12'1"  
8'8" x 11'0"  
11'10" x 9'6"  
10'1" x 11'1"

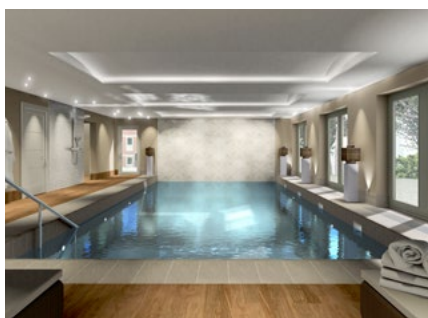


Audley Ellerslie  
Abbey Road, Malvern, Worcestershire WR14 3HL  
01684 438 400  
[www.audleyvillages.co.uk](http://www.audleyvillages.co.uk)

These floorplans are illustrative and for marketing purposes only. Maximum measurements are shown. Wardrobes not included in the overall room dimensions. Furniture shown to illustrate possible room layouts and not included in sale. Designs vary according to plot. All details should be checked at the Sales Office.

# Audley Ellerslie

17 Mason Court  
Third Floor Apartment  
Plot 56



## 2 bedroom third floor apartment

This two double bedroom apartment is located in Mason Court which features undercroft parking. The living/dining room has a Juliette balcony and the dual-aspect master bedroom has double fitted wardrobes and an en-suite shower room.

Property specifications:

- Juliette balcony in the living/dining room
- Dual aspect master bedroom with en-suite shower room and two built in wardrobes
- SieMatic kitchen with integrated appliances
- Master bathroom featuring Villeroy & Boch sanitary ware

Audley Ellerslie  
Abbey Road, Malvern, Worcestershire WR14 3HL  
01684 438 400  
[www.audleyvillages.co.uk](http://www.audleyvillages.co.uk)

