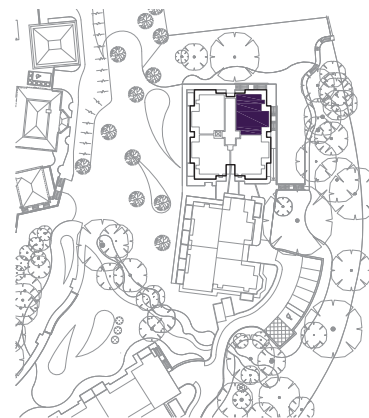


Audley Ellerslie

13 Vines Court
Third Floor Apartment
Plot 96



Internal Measurements	Metric (m)	Imperial (ft)
Kitchen/Living/Dining Room	6.16 x 5.98	20'3" x 19'7"
Master Bedroom	3.91 x 2.99	12'10" x 9'10"



Audley Ellerslie
Abbey Road, Malvern, Worcestershire WR14 3HL
01684 438 400
www.audleyvillages.co.uk

These floorplans are illustrative and for marketing purposes only. Maximum measurements are shown. Wardrobes not included in the overall room dimensions. Furniture shown to illustrate possible room layouts and not included in sale. Designs vary according to plot. All details should be checked at the Sales Office.

25 September 2017



Audley Ellerslie

13 Vines Court
Third Floor Apartment
Plot 96



1 bedroom, third floor apartment

This unique top floor apartment has characterful features and an open plan kitchen and living/dining room.

The living/dining room has space for a dining table and chairs and has a west-facing Juliet balcony with views of the landscaped grounds.

The master bathroom and en suite shower rooms are both fitted with Villeroy & Boch sanitaryware and elegant Hansgrohe fittings.

Property specifications:

- Juliet balcony in living/dining room
- Master bedroom with large fitted wardrobes and en suite shower room
- SieMatic kitchen with integrated appliances
- Separate W/C located in the hallway

Audley Ellerslie
Abbey Road, Malvern, Worcestershire WR14 3HL
01684 438 400
www.audleyvillages.co.uk

