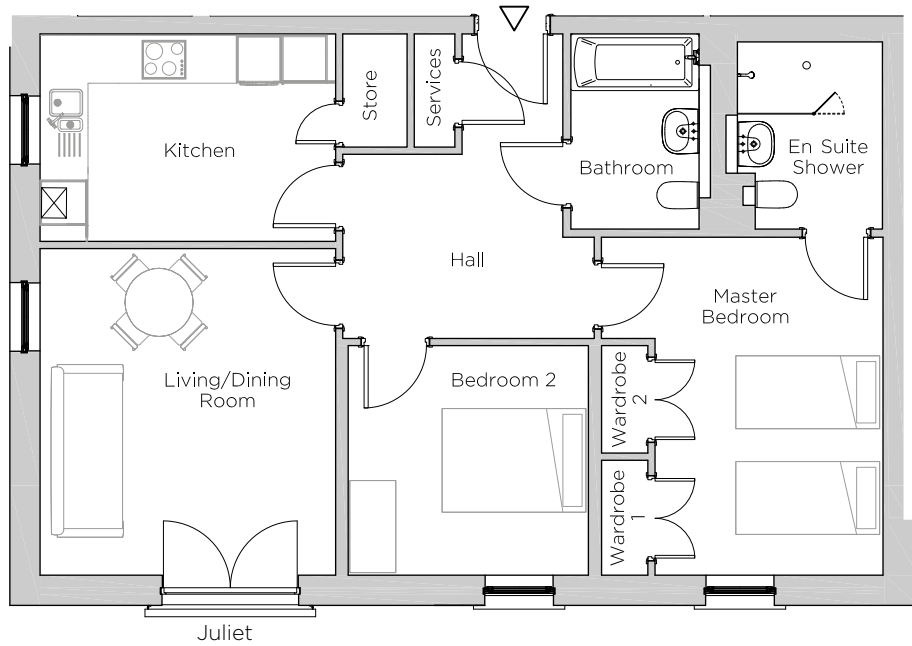


Audley Ellerslie

13 Mason Court
Plot 52

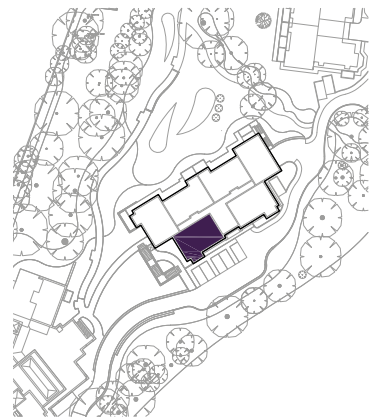


Internal Measurements

Metric (m)

Imperial (ft)

Living/Dining Room	3.91 x 4.32	12'10" x 14'2"
Kitchen	3.91 x 2.74	12'10" x 9'0"
Master Bedroom	3.02 x 4.47	9'11" x 14'8"
Bedroom 2	3.18 x 3.04	10'5" x 10'0"



Audley Ellerslie
Abbey Road, Malvern, Worcestershire WR14 3HL
01684 438 400
www.audleyvillages.co.uk

These floorplans are illustrative and for marketing purposes only. Maximum measurements are shown. Wardrobes not included in the overall room dimensions. Furniture shown to illustrate possible room layouts and not included in sale. Designs vary according to plot. All details should be checked at the Sales Office.

25 September 2017



Audley Ellerslie

13 Mason Court
Plot 52



2 bedroom, third floor apartment

This two double bedroom apartment enjoys east-facing views over the Severn Valley. The dual aspect living room has space for a dining room and has a Juliet balcony.

The master bedroom has double fitted wardrobes and an en suite shower room.

This apartment is located in Mason Court which features undercroft parking.

Property specifications:

- Dual aspect living/dining room
- Villeroy & Boch sanitaryware and elegant Hansgrohe fittings
- Luxury SieMatic kitchen with integrated appliances
- Lift access

Audley Ellerslie
Abbey Road, Malvern, Worcestershire WR14 3HL
01684 438 400
www.audleyvillages.co.uk

