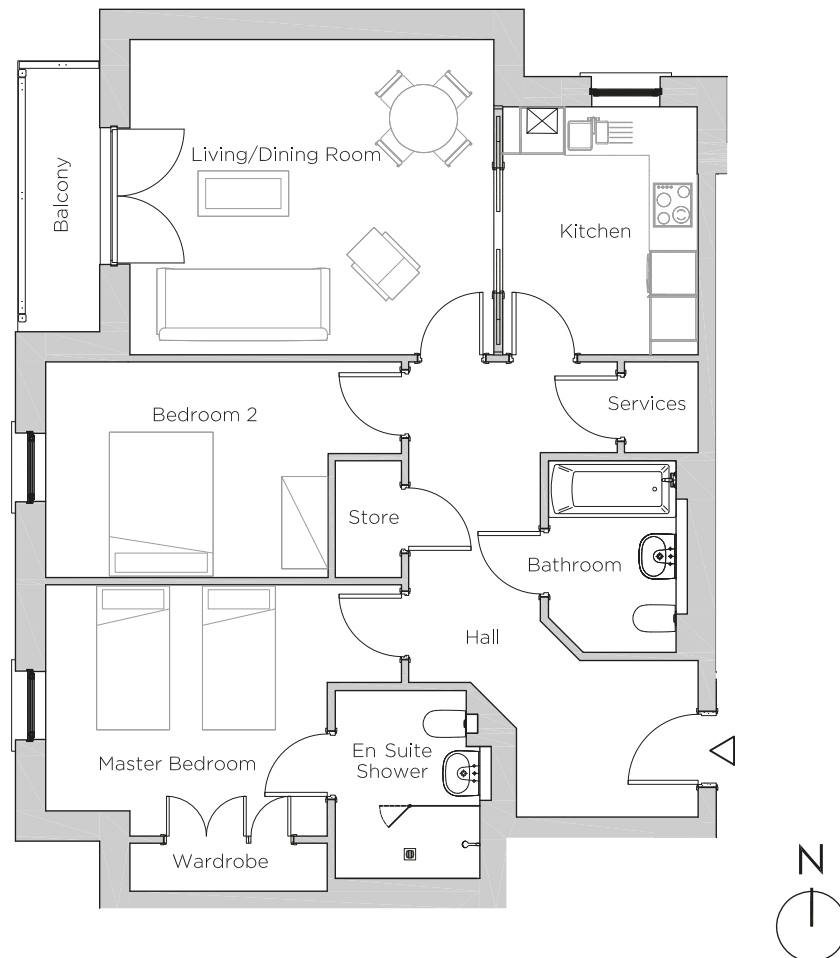


# Audley Ellerslie

12 Vines Court  
Plot 91



## Internal Measurements

## Metric (m)

## Imperial (ft)

Living/Dining Room

4.81 x 4.17

15'10" x 13'8"

Kitchen

3.28 x 2.57

10'9" x 8'5"

Master Bedroom

3.72 x 3.32

12'3" x 10'11"

Bedroom 2

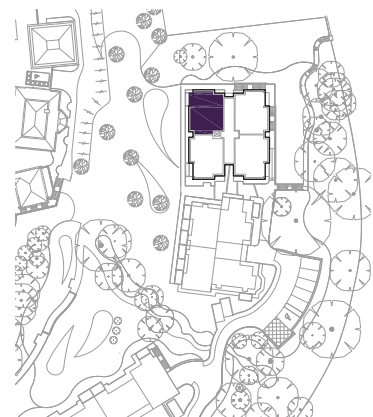
3.72 x 2.85

12'3" x 9'4"

Balcony

3.49 x 0.98

11'5" x 3'3"



Audley Ellerslie  
Abbey Road, Malvern, Worcestershire WR14 3HL  
01684 438 400  
[www.audleyvillages.co.uk](http://www.audleyvillages.co.uk)

These floorplans are illustrative and for marketing purposes only. Maximum measurements are shown. Wardrobes not included in the overall room dimensions. Furniture shown to illustrate possible room layouts and not included in sale. Designs vary according to plot. All details should be checked at the Sales Office.

25 September 2017



# Audley Ellerslie

12 Vines Court  
Plot 91



## 2 bedroom, first floor apartment

This two double bedroom apartment has glass pocket sliding doors from the kitchen into the living/dining room which has patio doors out on to a west-facing balcony. The master bedroom has fitted wardrobes and an en suite shower room.

Property specifications:

- Glass pocket doors in the kitchen for optional open plan living
- Luxury Villeroy & Boch bathrooms with elegant Hansgrohe fittings
- Luxury fully integrated SieMatic kitchen
- Lift access



Audley Ellerslie  
Abbey Road, Malvern, Worcestershire WR14 3HL  
01684 438 400  
[www.audleyvillages.co.uk](http://www.audleyvillages.co.uk)

