

Audley Ellerslie

12 Austin Court
Second Floor Apartment
Plot 72

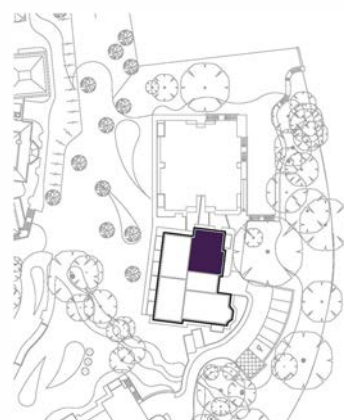


Internal Measurements

Metric (m)

Imperial (ft)

| | | |
|--------------------|-------------|----------------|
| Living/Dining Room | 4.75 x 3.78 | 15'7" x 12'5" |
| Kitchen | 3.26 x 2.50 | 10'8" x 8'2" |
| Master Bedroom | 4.21 x 3.09 | 13'10" x 10'2" |
| Bedroom 2 | 4.21 x 3.17 | 13'10" x 10'5" |
| Balcony | 0.97 x 3.52 | 3'2" x 11'7" |



Audley Ellerslie
Abbey Road, Malvern, Worcestershire WR14 3HL
01684 438 400
www.audleyvillages.co.uk

These floorplans are illustrative and for marketing purposes only. Maximum measurements are shown. Wardrobes not included in the overall room dimensions. Furniture shown to illustrate possible room layouts and not included in sale. Designs vary according to plot. All details should be checked at the Sales Office.

Audley Ellerslie

12 Austin Court
Second Floor Apartment
Plot 72



2 bedroom, second floor apartment

A two double bedroom apartment with an en suite shower room to the master bedroom.

The dual-aspect living/dining room leads on to a balcony with east-facing views.

The master bathroom and en suite shower rooms are both fitted with Villeroy & Boch sanitaryware and elegant Hansgrohe fittings.

Property specifications:

- Balcony from the living/dining room with views to the east
- En suite shower room to the master bedroom
- SieMatic kitchen with integrated appliances, and pocket sliding doors for optional open plan living

Audley Ellerslie
Abbey Road, Malvern, Worcestershire WR14 3HL
01684 438 400
www.audleyvillages.co.uk

