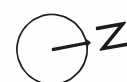


# Audley Ellerslie

10 Lewis Court  
Third Floor Apartment  
Plot 28



## Internal Measurements

## Metric (m)

## Imperial (ft)

Living/Dining Room

4.68 x 3.73

15'4" x 12'3"

Kitchen

2.73 x 3.73

9'0" x 12'3"

Master Bedroom

3.68 x 2.87

12'1" x 9'5"

Bedroom 2

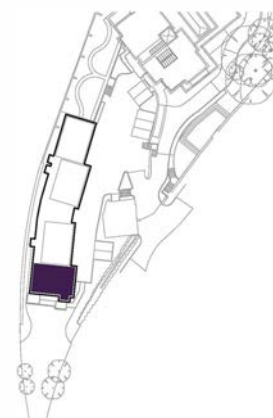
3.12 x 3.41

10'3" x 11'2"

Terrace

0.90 x 2.04

3'0" x 6'8"



Audley Ellerslie  
Abbey Road, Malvern, Worcestershire WR14 3HL  
01684 438 400  
[www.audleyvillages.co.uk](http://www.audleyvillages.co.uk)

These floorplans are illustrative and for marketing purposes only. Maximum measurements are shown. Wardrobes not included in the overall room dimensions. Furniture shown to illustrate possible room layouts and not included in sale. Designs vary according to plot. All details should be checked at the Sales Office.

25 September 2017



# Audley Ellerslie

10 Lewis Court  
Third Floor Apartment  
Plot 28



## 2 bedroom, third floor apartment

This top floor, two bedroom apartment benefits from stunning views. It offers an elegant living/dining room and has a light and airy feel.

The apartment has lift access and is located next to Lind House with level access to the main facilities. Undercroft parking is also available. The kitchen has glazed pocket sliding doors in to the dual-aspect living room which has space for a dining table and chairs and has both a south-facing roof terrace and an east-facing Juliet balcony.

Property specifications:

- Private balcony and Juliet balcony
- Master bedroom with double fitted wardrobes and en suite shower room
- SieMatic kitchen with integrated appliances, and pocket sliding doors
- Second double bedroom

Audley Ellerslie  
Abbey Road, Malvern, Worcestershire WR14 3HL  
01684 438 400  
[www.audleyvillages.co.uk](http://www.audleyvillages.co.uk)

