

Audley Cooper's Hill

7 Gloucester Crescent
Ground Floor Apartment
Plot 81



2 bedroom, ground floor apartment

A two double bedroom apartment located on the ground floor of Gloucester Crescent with two private terraces accessed from either the main bedroom or open plan living room. The main bedroom has two double fitted wardrobes and en suite shower room, the large modern kitchen includes integrated appliances and space for a dining room table which is linked to the spacious living room.

Property specifications:

- Expansive living/dining room with open plan kitchen
- Modern SieMatic kitchen with integrated Neff appliances
- Ample sized main bedroom with built-in wardrobe
- Two private terraces
- Villeroy & Boch sanitaryware
- Hallway storage
- Guest bedroom
- Ground floor apartment



Audley Cooper's Hill,
Cooper's Hill Lane,
Englefield Green, Surrey TW20 0YU
01784 557 545
www.audleyvillages.co.uk



Audley Cooper's Hill

7 Gloucester Crescent
Ground Floor Apartment
Plot 81

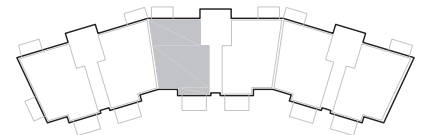


Internal Measurements

Metric (m)

Imperial (ft)

Living/Dining Room	4.89 x 4.00	16'0" x 13'1"
Kitchen	4.08 x 3.31	13'5" x 10'10"
Main Bedroom	4.12 x 3.81	13'6" x 12'6"
Bedroom	3.48 x 3.14	11'5" x 10'4"
Terrace (approx)	4.20 x 2.40	13'9" x 7'10"
Terrace (approx)	3.60 x 1.50	11'10" x 4'11"



Audley Cooper's Hill
Cooper's Hill Lane
Englefield Green, Surrey TW20 0YU
01784 557 545
www.audleyvillages.co.uk

These floor plans are illustrative and for marketing purposes only. Maximum measurements are shown with longer dimension quoted first. Dimensions are quoted for the main area of the room only. Built-in wardrobes not included in the overall room dimensions. Furniture shown to illustrate possible room layouts and not included in sale. Designs vary according to plot. All details should be checked at the Sales Office.

A: 07 August 2020 C: 224050

