

# Audley Cooper's Hill

3 Mowbray Hall  
Ground Floor Apartment  
Plot 14



## 2 bedroom, ground floor apartment

This superb two bedroom apartment located on the ground floor of Mowbray Hall, benefits from a large main bedroom equipped with built-in wardrobes and en suite shower. The private south-facing terrace can be reached via the main bedroom. The property has a large living room/kitchen area that spans the length of the property.

Property specifications:

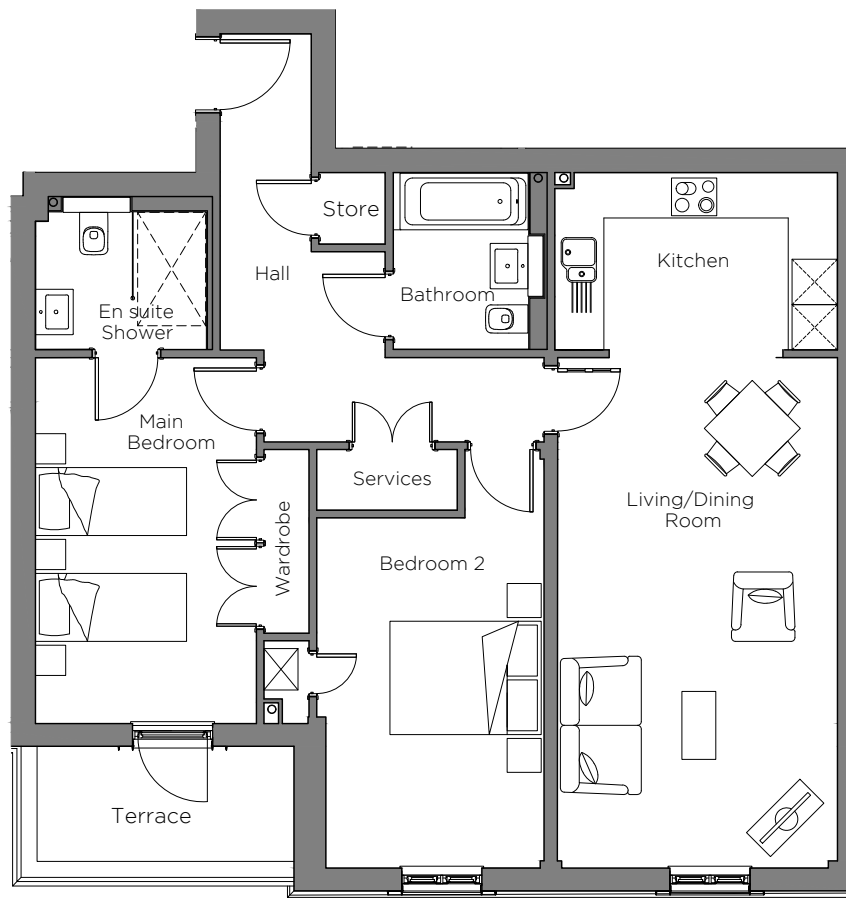
- Large south-facing terrace directly accessed via the main bedroom
- Expansive living/dining room with adjoining kitchen
- Modern SieMatic kitchen with integrated Neff appliances
- Ample sized main bedroom with built-in wardrobe
- Villeroy & Boch sanitaryware
- Guest bedroom
- Ground floor property

Audley Cooper's Hill,  
Cooper's Hill Lane,  
Englefield Green, Surrey TW20 0YU  
01784 557 545  
[www.audleyvillages.co.uk](http://www.audleyvillages.co.uk)



# Audley Cooper's Hill

3 Mowbray Hall  
Ground Floor Apartment  
Plot 14

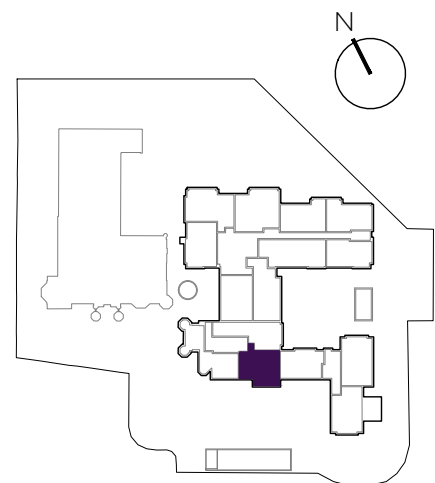


## Internal Measurements

## Metric (m)

## Imperial (ft)

Living/Dining Room	6.76 x 3.70	22'2" x 12'2"
Kitchen	3.74 x 2.35	12'3" x 7'8"
Main Bedroom	4.84 x 2.92	15'11" x 9'7"
Bedroom 2	4.63 x 2.89	15'3" x 9'6"
Terrace (approx)	3.40 x 1.52	11'2" x 5'0"



Audley Cooper's Hill  
Cooper's Hill Lane,  
Englefield Green, Surrey TW20 0YU  
01784 557 545  
[www.audleyvillages.co.uk](http://www.audleyvillages.co.uk)

These floor plans are illustrative and for marketing purposes only. Maximum measurements are shown with longer dimension quoted first. Dimensions are quoted for the main area of the room only. Built-in wardrobes not included in the overall room dimensions. Furniture shown to illustrate possible room layouts and not included in sale. Designs vary according to plot. All details should be checked at the Sales Office.

A: 06 December 2018 C: 224050

