

# Audley Cooper's Hill

3 Charter Place  
Ground Floor Apartment  
Plot 101



## 2 bedroom, ground floor apartment

A two double bedroom ground floor apartment with open plan living/dining room and kitchen area with direct access onto private south-facing terrace. The main bedroom benefits from dual fitted wardrobes and en suite shower room. The apartment has an additional double bedroom and guest bathroom with Villeroy & Boch sanitaryware.

Property specifications:

- Large south-facing terrace directly accessed via the living/dining room
- Expansive living/dining room with adjoining kitchen
- Modern SieMatic kitchen with integrated Neff appliances
- Ample sized main bedroom with built-in wardrobe
- Villeroy & Boch sanitaryware
- Guest bedroom
- Ground floor property

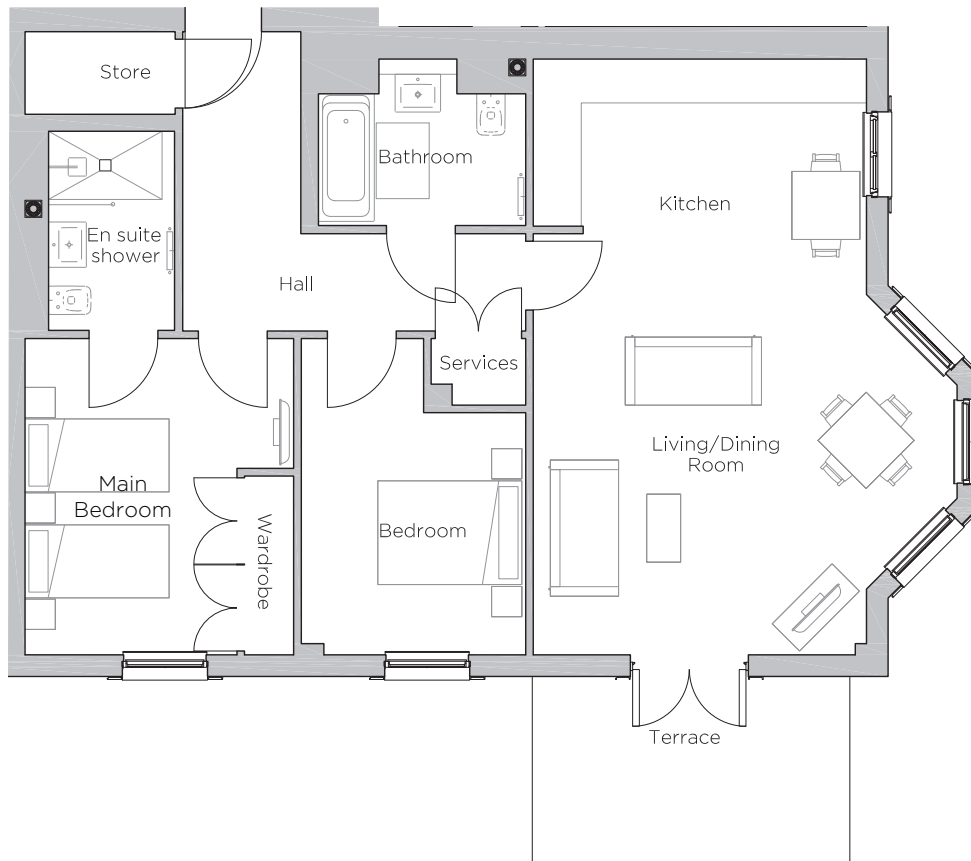


Audley Cooper's Hill,  
Cooper's Hill Lane,  
Englefield Green, Surrey TW20 0YU  
01784 557 545  
[www.audleyvillages.co.uk](http://www.audleyvillages.co.uk)



# Audley Cooper's Hill

3 Charter Place  
Ground Floor Apartment  
Plot 101

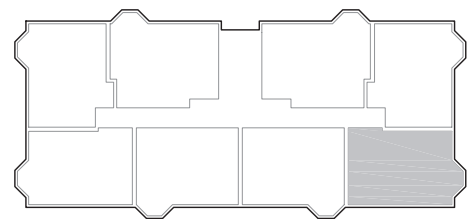


## Internal Measurements

## Metric (m)

## Imperial (ft)

Living/Dining Room	5.67 x 4.40	18'7" x 14'6"
Kitchen	4.40 x 2.21	14'6" x 7'3"
Main Bedroom	4.18 x 2.80	13'9" x 9'2"
Bedroom	3.20 x 2.96	10'6" x 9'9"
Terrace (approx)	4.20 x 2.47	13'9" x 8'1"



Audley Cooper's Hill  
Cooper's Hill Lane  
Englefield Green, Surrey TW20 0YU  
01784 557 545  
[www.audleyvillages.co.uk](http://www.audleyvillages.co.uk)

These floor plans are illustrative and for marketing purposes only. Maximum measurements are shown with longer dimension quoted first. Dimensions are quoted for the main area of the room only. Built-in wardrobes not included in the overall room dimensions. Furniture shown to illustrate possible room layouts and not included in sale. Designs vary according to plot. All details should be checked at the Sales Office.

A: 07 August 2020 C: 224050

