

27 Pembroke Court



27 Pembroke court

Two bedroom apartment

A spacious two bedroom apartment on the second floor with a dual aspect, open plan kitchen/dining room that leads out on to a south-east facing balcony.

The master bedroom has fitted wardrobes and an en suite shower room and there is a separate guest bathroom.

Property specifications

- SieMatic kitchen with integrated appliances and Corian worktops
- Open living/dining room
- Spacious master bedroom with fitted wardrobes and walk in en suite shower
- Separate guest bathroom
- Double aspect lounge/kitchen
- Underground car park space
- Professionally cleaned apartment, including carpets

Guide Price £625,000 (other fees apply)

Includes curtains, blinds and ceiling shades, worth £3,000.

Monthly management fee: £986.71

Ground rent: £500

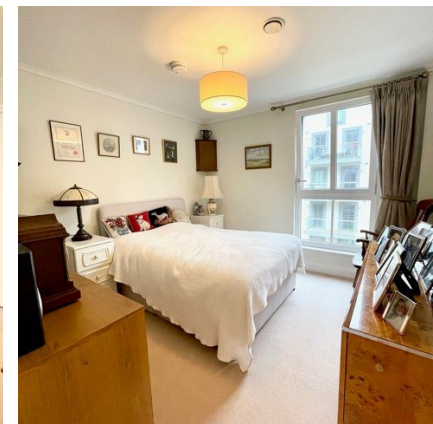
Council tax band: F

Car parking space: £553.85 annually

Viewing by appointment with the sales office.

01784 557 545

cooperssales@audleyvillages.co.uk



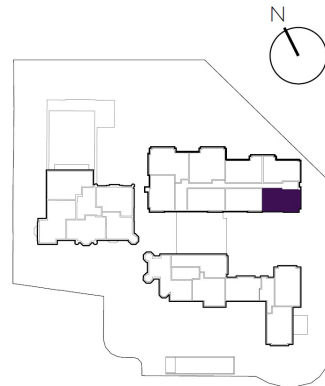
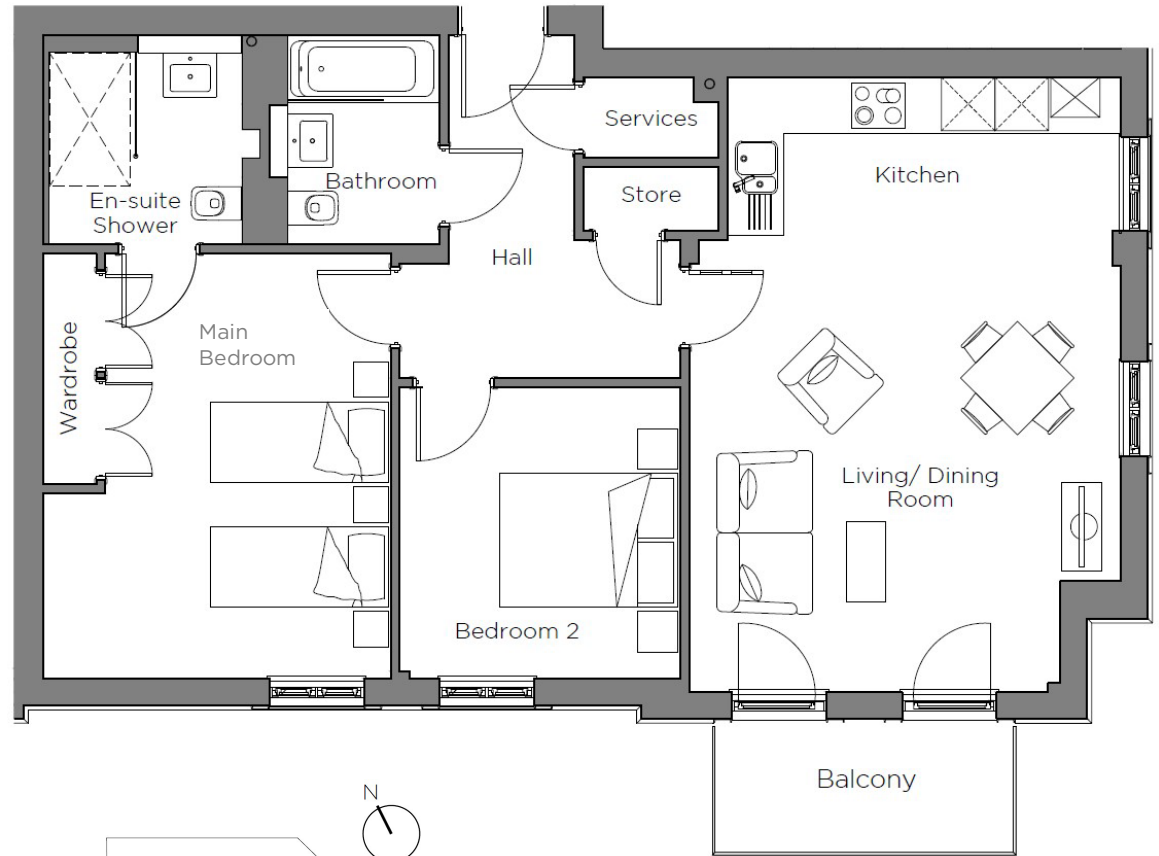
27 Pembroke court

Internal Measurements

Metric (m) Imperial (ft)

Kitchen/Living/ Dining Room	6.89 x 4.84	22'7" x 15'10"
Main Bedroom	4.76 x 3.90	15'8" x 12'10"
Bedroom 2	3.26 x 3.15	10'9" x 10'4"
Balcony (approx.)	3.34 x 1.49	11'0" x 4'11"
Total Sq. Ft	905	

Built in wardrobes in bedrooms have not been included in the overall dimensions. Maximum measurements shown.



Score	Energy rating	Current	Potential
92+	A		
81-91	B	85 B	85 B
69-80	C		
55-68	D		
39-54	E		
21-38	F		
1-20	G		

These pages are intended for marketing purposes only. Designs vary according to plot and all details should be checked at the Sales office. May 2022.

