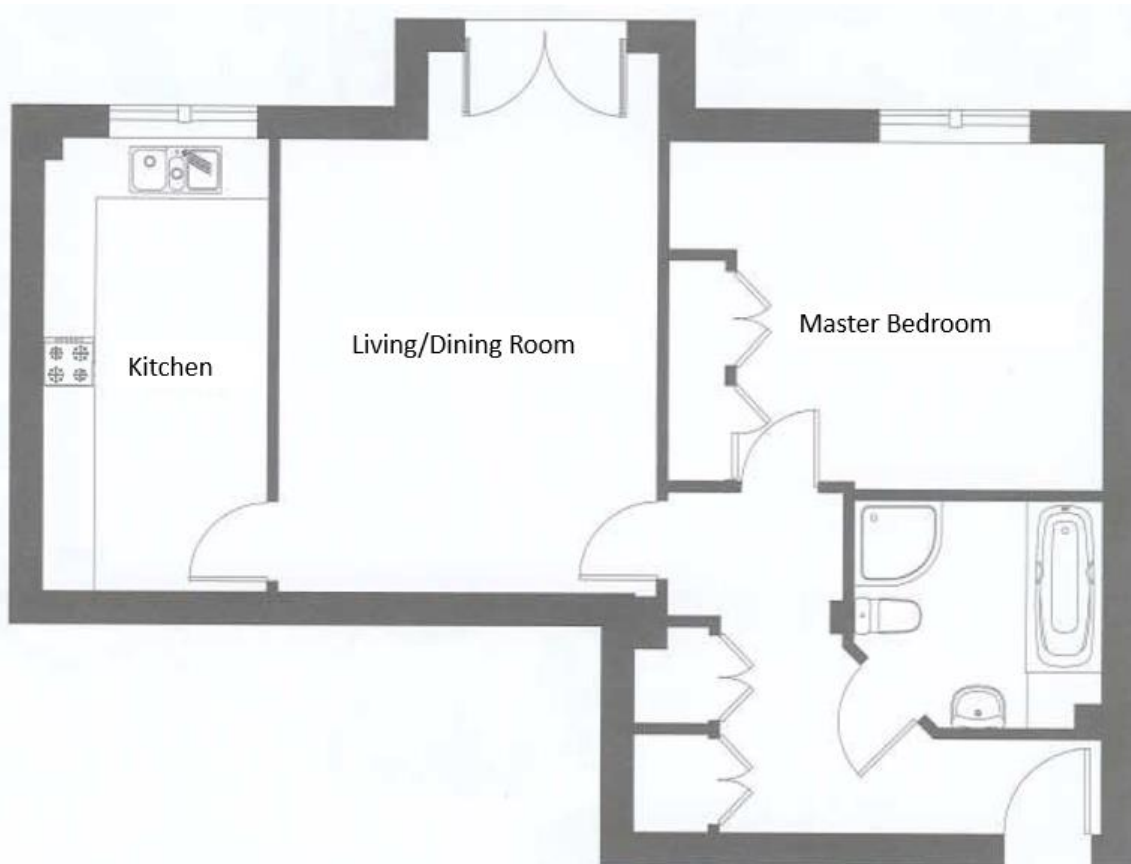


# Audley Clevedon

6 Clevedon House  
One bedroom pre-owned apartment



Internal Measurements	Metric (m)	Imperial (ft)
Living/Dining Room	4.70m x 3.95m	15'5" x 12'11"
Kitchen	4.70m x 2.40m	15'5" x 7'10"
Master Bedroom	3.85m x 3.55m	12'7" x 11'7"
Total Sq. Ft	716	

	Current	Potential
Very energy efficient - lower running costs		
(92 plus) <b>A</b>		
(81-91) <b>B</b>	87	87
(69-80) <b>C</b>		
(55-68) <b>D</b>		
(39-54) <b>E</b>		
(21-38) <b>F</b>		
(1-20) <b>G</b>		
Not energy efficient - higher running costs		

Audley Clevedon  
Ben Rhydding Drive, Ben Rhydding, Ilkley, LS29 8AQ  
01943 498 248 clevedonsales@audleyvillages.co.uk  
www.audleyvillages.co.uk

Built in wardrobes in bedrooms have not been included in the overall dimensions.  
Maximum measurements shown. These pages are intended for marketing purposes only.  
Designs vary according to plot and all details should be checked at the Sales office.  
July 2015



# Audley Clevedon

6 Clevedon House  
One bedroom pre-owned apartment



## One bedroom ground floor apartment

This ground floor, one bedroom apartment situated in Clevedon House and close to the central facilities, has a spacious living room and a separate kitchen fitted with Bosch appliances. The kitchen is beautifully complimented by a large window that pulls in a large degree of natural light. The property boasts a generous modern bathroom and two storage cupboards in the hallway.

### Property specifications

- Light and airy living room
- Separate kitchen fitted with Bosch appliances
- Located in Clevedon House and close to the central facilities
- Separate bathroom
- Spacious hallway with ample storage

**Guide Price £250,000** (other fees apply)

Monthly management fee £797.92

Bistro credit £68.85

Viewing by appointment with the sales office.

Audley Clevedon  
Ben Rhydding Drive, Ben Rhydding, Ilkley, LS29 8AQ  
01943 498 248 [clevedonsales@audleyvillages.co.uk](mailto:clevedonsales@audleyvillages.co.uk)  
[www.audleyvillages.co.uk](http://www.audleyvillages.co.uk)