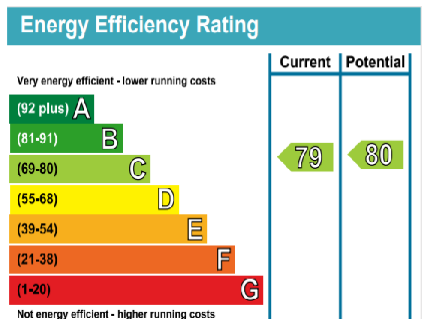


Audley Clevedon

3 Elmsley Lodge 2 bedroom ground floor apartment



Internal Measurements	Metric (m)	Imperial (ft)
Living/dining room	4.50m x .4.10m	14'10" x 13'5"
Kitchen	2.40m x 3.85m	7'10" x 12'8"
Master bedroom	4.5m x 3.25m	14'10" x 10'8"
Bedroom two	2.80m x 2.85m	9'2" x 9'4"
Total Sq. Ft	852	



Audley Clevedon
Ben Rhydding Drive, Ben Rhydding, Ilkley, LS29 8AQ
01943 498 248 clevedonsales@audleyvillages.co.uk
www.audleyvillages.co.uk

Built in wardrobes in bedrooms have not been included in the overall dimensions.
Maximum measurements shown. These pages are intended for marketing purposes only.
Designs vary according to plot and all details should be checked at the Sales office.

Audley Clevedon

3 Elmsley Lodge

2 bedroom ground floor apartment



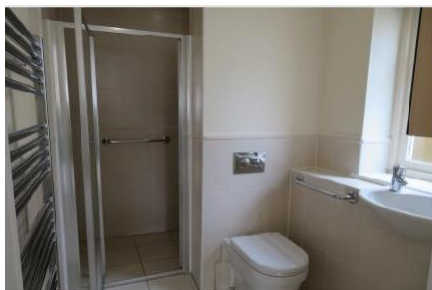
2 bedroom ground floor apartment

This two bedroom ground floor apartment is located at the front of Elmsley Lodge, conveniently located close to the main house. The apartment has a very light, dual aspect, south-facing lounge and a separate fully fitted kitchen with Bosch appliances. The main bedroom is also dual aspect and south facing with an en suite shower room. The apartment has just been redecorated throughout and has new carpets.



Property specifications

- Light, dual aspect south facing living/dining room and bedroom with en suite
- Separate kitchen with fitted Bosch appliances
- Close to Clevedon House where all the facilities are located
- House bathroom with full size bath
- Spacious hallway with two large storage cupboards



Guide Price £375,000 (other fees apply)

Monthly management fee £797.92

Bistro credit £68.85

Viewing by appointment with the sales office.

01943 498 248 clevedonsales@audleyvillages.co.uk
www.audleyvillages.co.uk