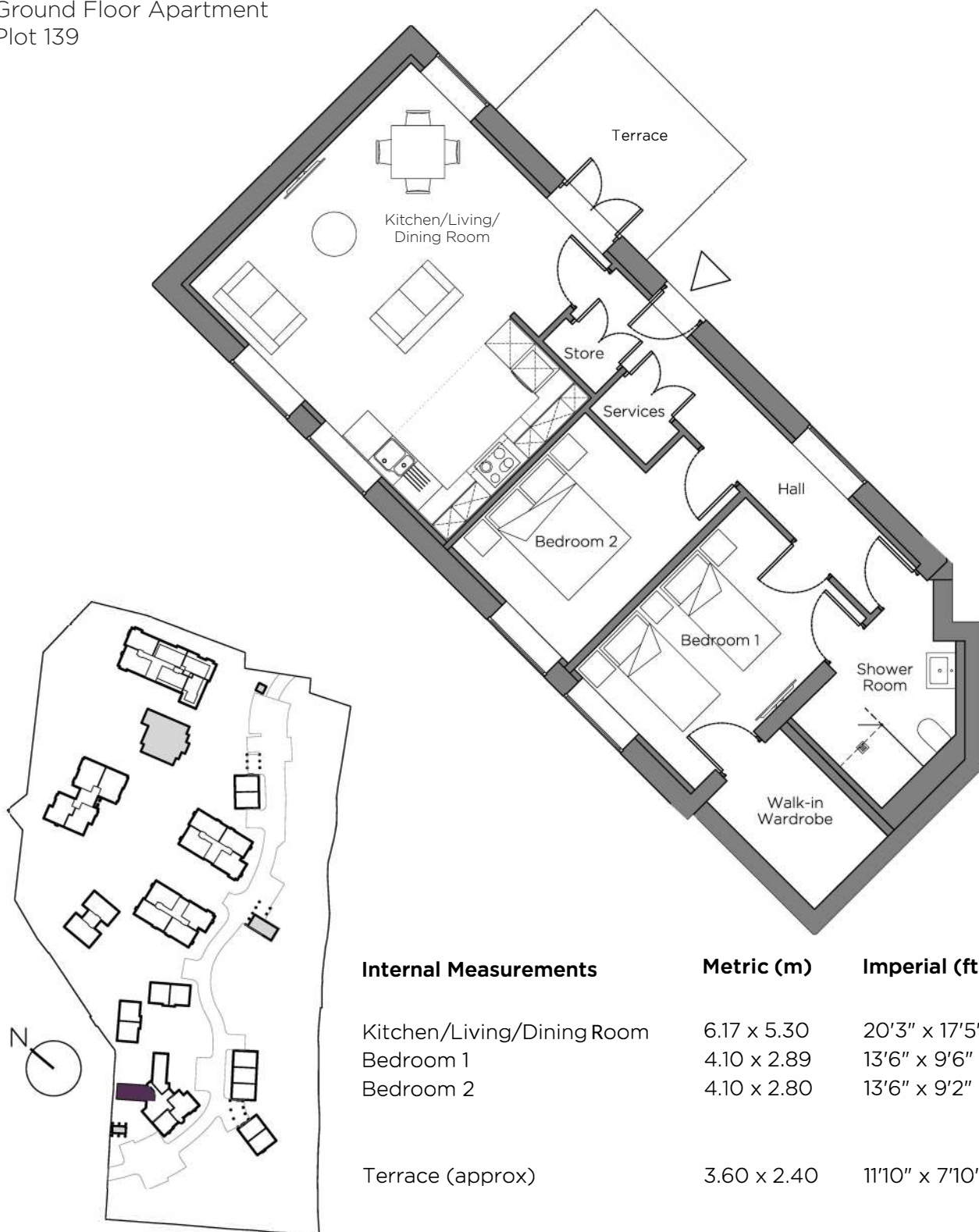


Audley Chalfont Dene

3 Rydinghurst House
Ground Floor Apartment
Plot 139



Internal Measurements

Kitchen/Living/Dining Room
Bedroom 1
Bedroom 2

Metric (m)

6.17 x 5.30
4.10 x 2.89
4.10 x 2.80

Imperial (ft)

20'3" x 17'5"
13'6" x 9'6"
13'6" x 9'2"

Terrace (approx)

3.60 x 2.40

11'10" x 7'10"

Audley Chalfont Dene
Rickmansworth Lane,
Chalfont St Peter, Buckinghamshire SL9 0LX
01494 876 173
www.audleyvillages.co.uk

These floor plans are illustrative and for marketing purposes only. Maximum measurements are shown with longer dimension quoted first. Dimensions are quoted for the main area of the room only. Built-in wardrobes not included in the overall room dimensions. Furniture shown to illustrate possible room layouts and not included in sale. Designs vary according to plot. All details should be checked at the Sales Office.

Audley Chalfont Dene

3 Rydinghurst House
Ground Floor Apartment
Plot 139



2 bedroom, ground floor apartment

A unique two bedroom ground floor apartment in the restored Rydinghurst House, accessed via its own front door directly from the landscaped grounds.

The master bedroom has a large walk-in wardrobe and access to the shower room, which can also be accessed from the hall.

The apartment has a dual-aspect open plan kitchen/living dining room with patio doors opening to a secluded terrace.

The fully equipped SieMatic kitchen comes with Corian worktops and integrated appliances.

Property specifications:

- Unique property in the restored Rydinghurst House
- Open plan living/dining room
- Luxury Villeroy & Boch shower room accessed from the hall and master bedroom
- Large walk-in wardrobe in the master bedroom

Audley Chalfont Dene
Rickmansworth Lane,
Chalfont St Peter, Buckinghamshire SL9 0LX
01494 876 173
www.audleyvillages.co.uk

