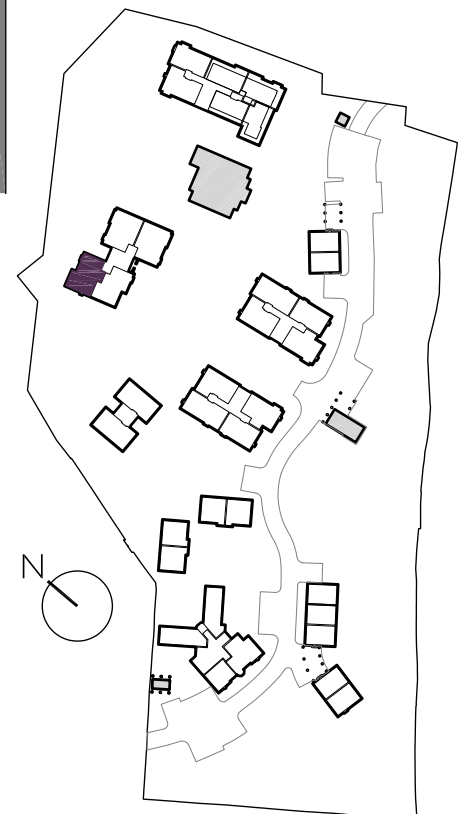
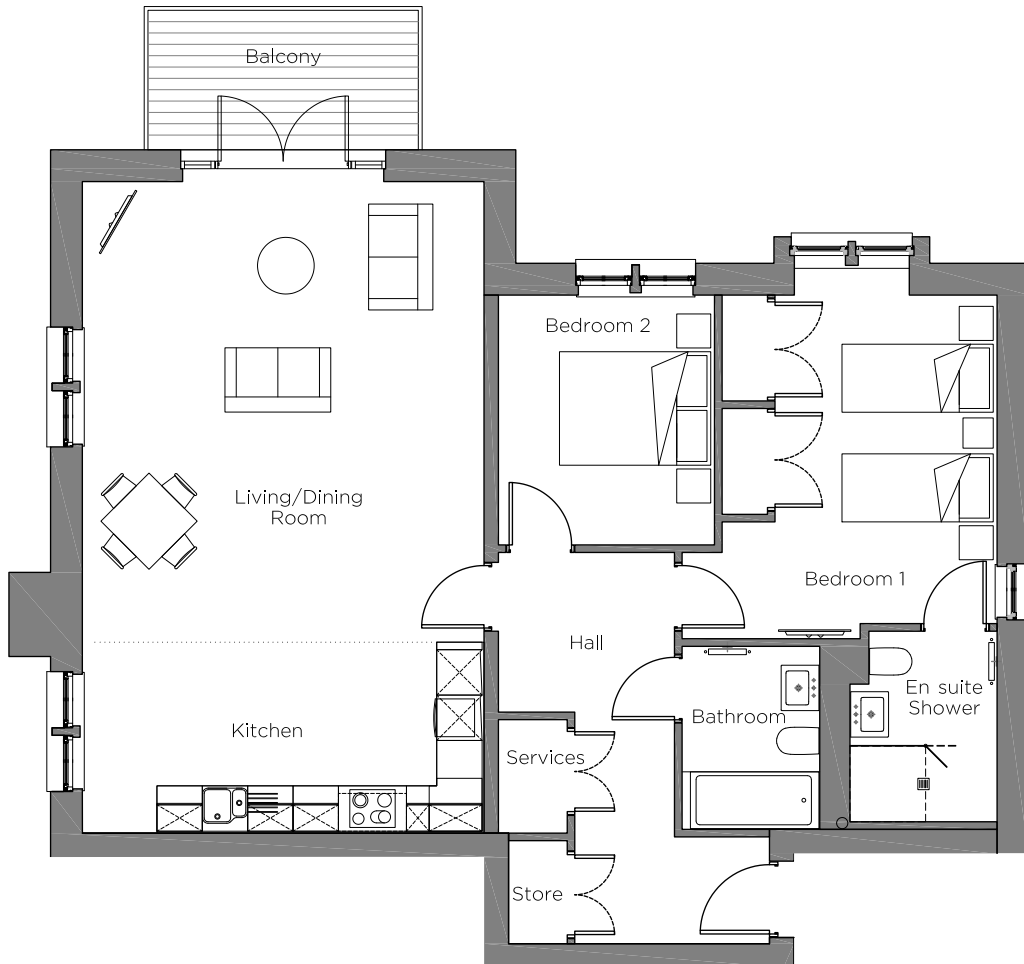


# Audley Chalfont Dene

6 Skipping Way  
 First Floor Apartment  
 Plot 103



Internal Measurements	Metric (m)	Imperial (ft)
Kitchen/Living/Dining Room	8.61 x 5.31	28'3" x 17'5"
Bedroom 1	4.34 x 2.93	14'3" x 9'8"
Bedroom 2	3.30 x 2.86	10'10" x 9'5"
Balcony (approx)	3.57 x 1.84	11'9" x 6'1"

Audley Chalfont Dene  
 Rickmansworth Lane,  
 Chalfont St Peter, Buckinghamshire SL9 OLX  
 01494 876 173  
[www.audleyvillages.co.uk](http://www.audleyvillages.co.uk)

Built-in wardrobes in bedrooms have not been included in the overall dimensions.  
 Maximum measurements shown. These pages are intended for marketing purposes only.  
 Designs vary according to plot and all details should be checked at the Sales Office.  
 August 2021



# Audley Chalfont Dene

6 Skipping Way  
First Floor Apartment  
Plot 103



## 2 bedroom, first floor apartment

A first floor, two double bedroom apartment in Skipping Way, located close to the village hall.

The large master bedroom has an en suite shower room and double built-in wardrobes. This apartment has a dual-aspect, open plan kitchen/living/dining room with doors opening to a balcony overlooking the landscaped grounds.

The fully equipped SieMatic kitchen comes with Corian worktops and integrated appliances. The property has a separate guest bathroom and hallway storage space.

Property specifications:

- En suite shower room from the master bedroom
- Luxury Villeroy & Boch en suite and guest bathroom
- Fully equipped SieMatic kitchen with integrated appliances
- Living room with balcony and space for a dining table
- Carpeted and decorated throughout
- Lift access

Audley Chalfont Dene  
Rickmansworth Lane,  
Chalfont St Peter, Buckinghamshire SL9 0LX  
01494 876 173  
[www.audleyvillages.co.uk](http://www.audleyvillages.co.uk)

