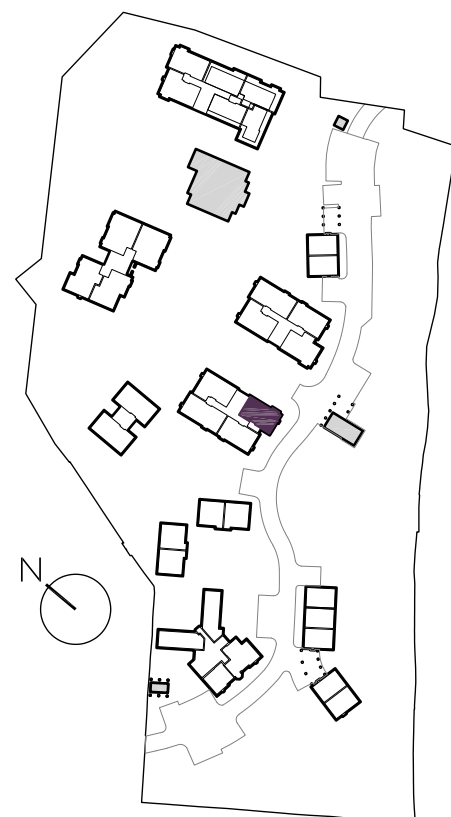
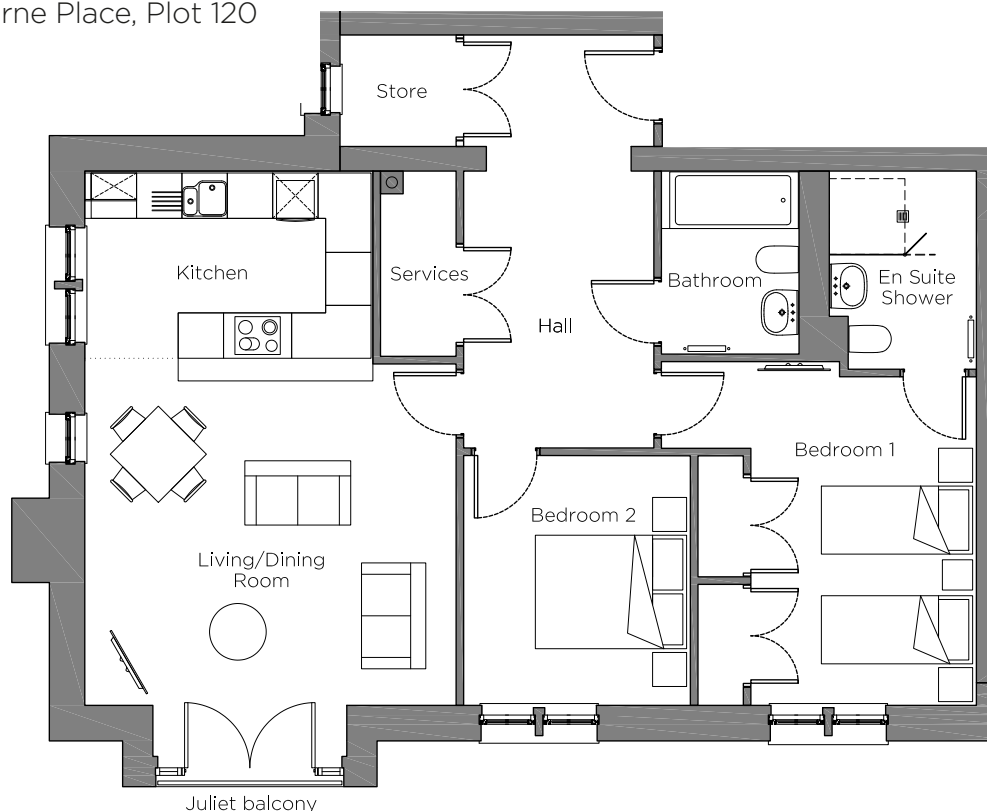


# Audley Chalfont Dene

First Floor Apartment  
5 Misbourne Place, Plot 120



## Internal Measurements

	Metric (m)	Imperial (ft)
Kitchen/Living/Dining Room	7.06 x 4.91	23'2" x 16'1"
Bedroom 1	4.34 x 2.98	14'3" x 9'9"
Bedroom 2	3.30 x 3.00	10'10" x 9'10"

Audley Chalfont Dene  
Rickmansworth Lane,  
Chalfont St Peter, Buckinghamshire SL9 OLX  
01494 876 173  
[www.audleyvillages.co.uk](http://www.audleyvillages.co.uk)

Built-in wardrobes in bedrooms have not been included in the overall dimensions.  
Maximum measurements shown. These pages are intended for marketing purposes only.  
Designs vary according to plot and all details should be checked at the Sales Office.  
August 2021



# Audley Chalfont Dene

First Floor Apartment  
5 Misbourne Place, Plot 120



## 2 bedroom, first floor apartment

A first floor, two double bedroom apartment with a dual-aspect open plan kitchen/living room with an east-facing Juliet balcony.

The master bedroom has an en suite shower room and double built-in wardrobes. Both bedrooms have east-facing views of the landscaped grounds.

The fully equipped SieMatic kitchen comes with Corian worktops and integrated appliances.

Property specifications:

- Open plan kitchen/living room with dining area
- East-facing Juliet balcony in the living room
- Luxury Villeroy & Boch en suite shower room and guest bathroom
- West-facing bedrooms and terrace
- Lift access
- Carpeted and decorated throughout

