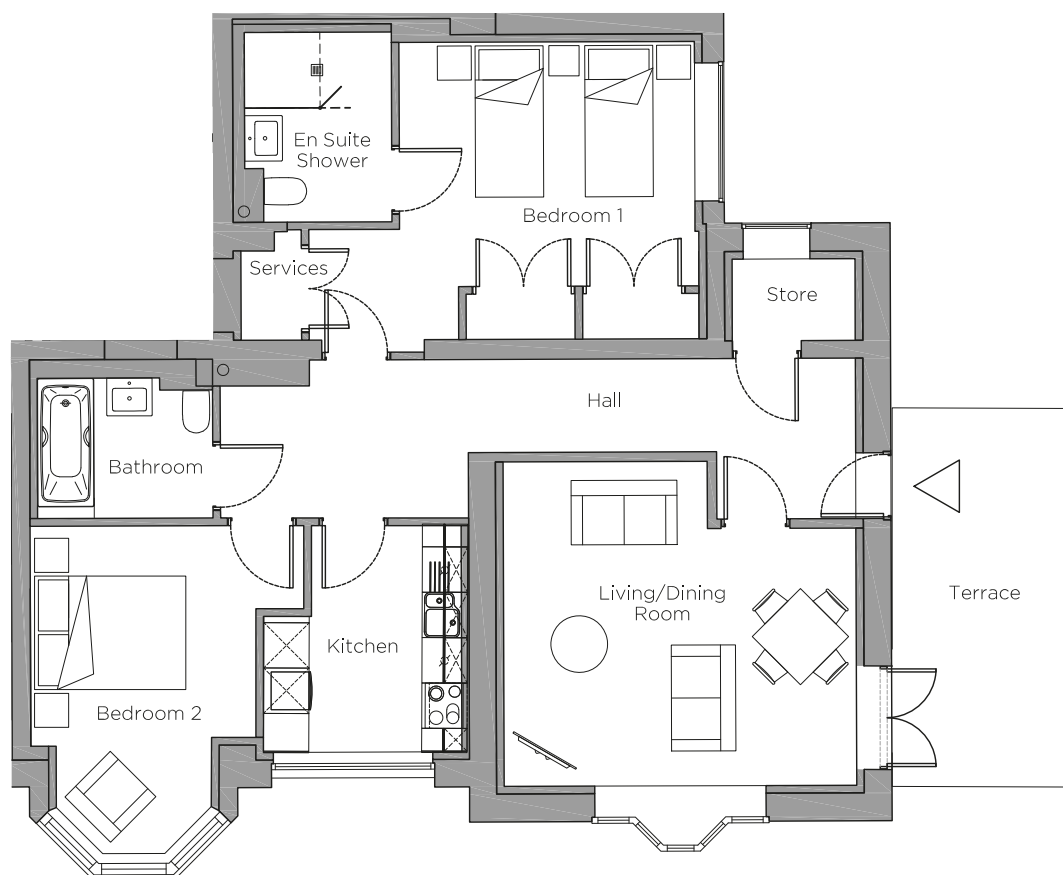


Audley Chalfont Dene

Ground Floor Apartment
2 Rydinghurst House, RH138



Internal Measurements

Metric (m)

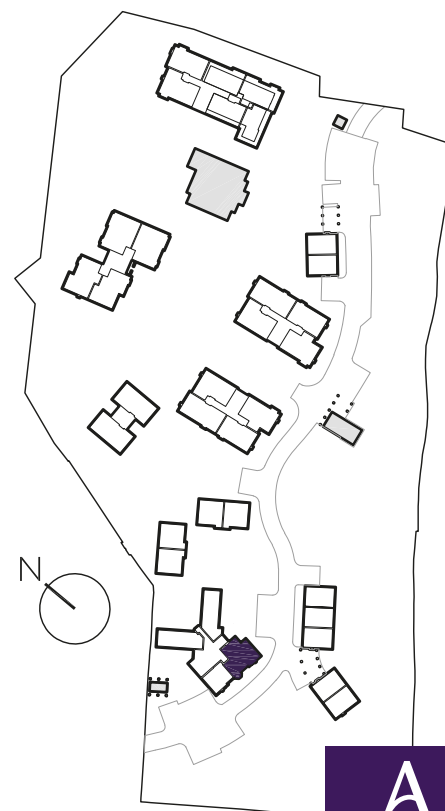
Imperial (ft)

Living/Dining Room	4.66 x 4.29	15'4" x 14'1"
Kitchen	2.98 x 2.60	9'9" x 8'6"
Bedroom 1	3.90 x 3.23	12'10" x 10'7"
Bedroom 2	2.98 x 2.80	9'10" x 9'2"

Terrace (approx)	5.00 x 2.70	16'5" x 8'10"
------------------	-------------	---------------

Audley Chalfont Dene
Rickmansworth Lane,
Chalfont St Peter, Buckinghamshire SL9 0LX
01494 876 173
www.audleyvillages.co.uk

Built-in wardrobes in bedrooms have not been included in the overall dimensions.
Maximum measurements shown. These pages are intended for marketing purposes only.
Designs vary according to plot and all details should be checked at the Sales Office.
August 2021



Audley Chalfont Dene

Ground Floor Apartment
2 Rydinghurst House, RH138



2 bedroom, ground floor apartment

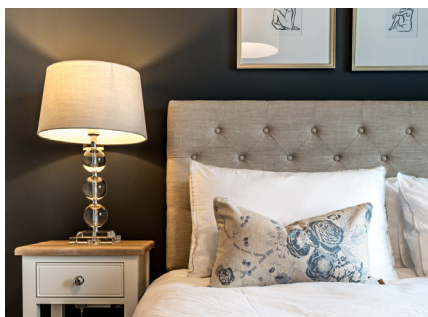
A unique two bedroom, ground floor apartment in the restored Rydinghurst House, accessed via its own front door directly from the landscaped grounds.

The master bedroom has double wardrobes and en suite shower room and bedroom two has a light, south-facing bay window with space for a chair.

The apartment has a fully equipped SieMatic kitchen with Corian worktops and integrated appliances. The dual-aspect living room has French doors opening to an east-facing terrace.

Property specifications:

- Unique property in the restored Rydinghurst House
- Living room with bay window and doors to a terrace
- Luxury Villeroy & Boch en suite shower room
- Double wardrobes in the master bedroom
- Guest bathroom



Images are for illustration purposes only

