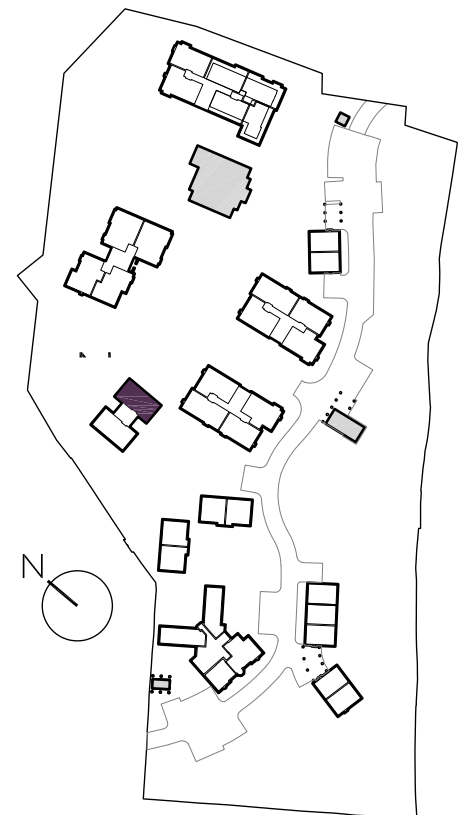
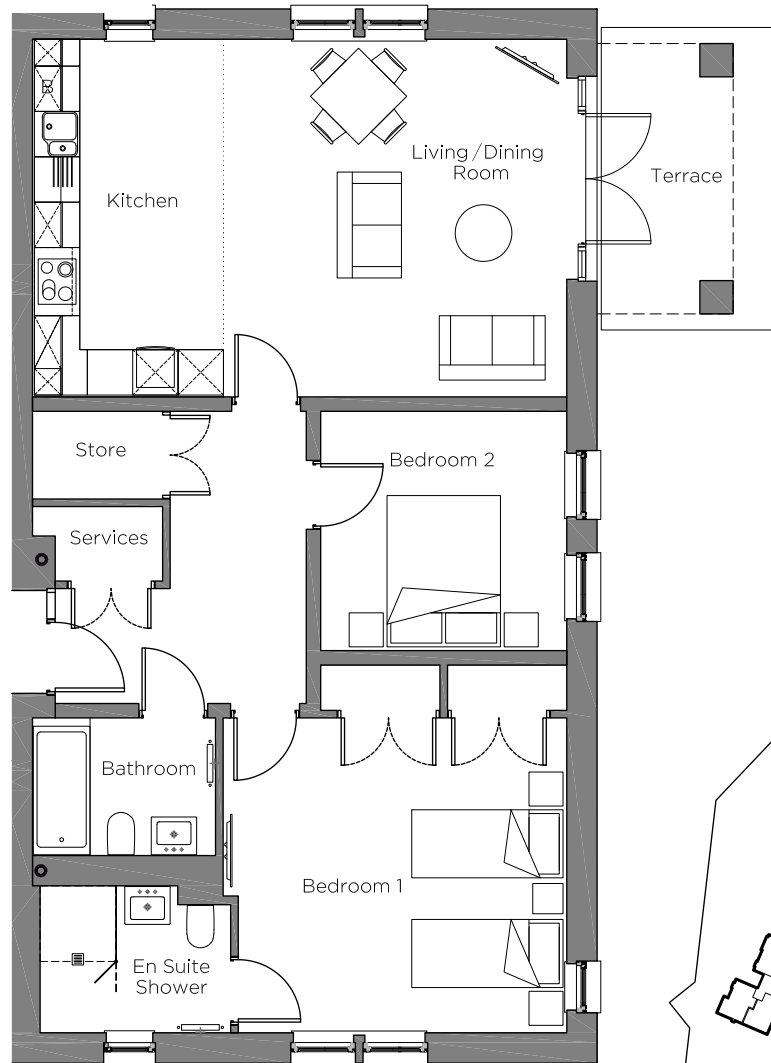


Audley Chalfont Dene

Ground Floor Apartment
2 Chiltern Court, Plot 125



Internal Measurements	Metric (m)	Imperial (ft)
Kitchen/Living/Dining Room	7.06 x 4.73	23'2" x 15'6"
Bedroom 1	4.34 x 4.16	14'3" x 13'8"
Bedroom 2	3.25 x 3.16	10'8" x 10'5"
Terrace (approx)	4.00 x 2.40	13'1" x 7'10"

Audley Chalfont Dene
Rickmansworth Lane,
Chalfont St Peter, Buckinghamshire SL9 OLX
01494 876 173
www.audleyvillages.co.uk

Built-in wardrobes in bedrooms have not been included in the overall dimensions.
Maximum measurements shown. These pages are intended for marketing purposes only.
Designs vary according to plot and all details should be checked at the Sales Office.
August 2021



Audley Chalfont Dene

Ground Floor Apartment
2 Chiltern Court, Plot 125



2 bedroom, ground floor apartment

This ground floor, two double bedroom apartment has a fully equipped open plan SieMatic kitchen with Corian worktops and integrated appliances, with French doors in the living room opening to an east-facing terrace.

The dual-aspect master bedroom has an en suite shower room and double built-in wardrobes.

Property specifications:

- Open plan kitchen/living room with dining area
- French doors to an east-facing terrace from the living room
- Luxury Villeroy & Boch en suite shower room and guest bathroom
- Carpeted and decorated throughout

Audley Chalfont Dene
Rickmansworth Lane,
Chalfont St Peter, Buckinghamshire SL9 0LX
01494 876 173
www.audleyvillages.co.uk

