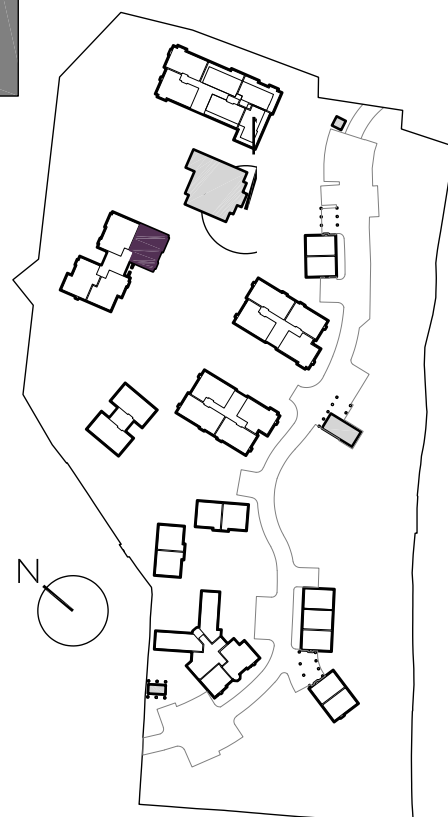
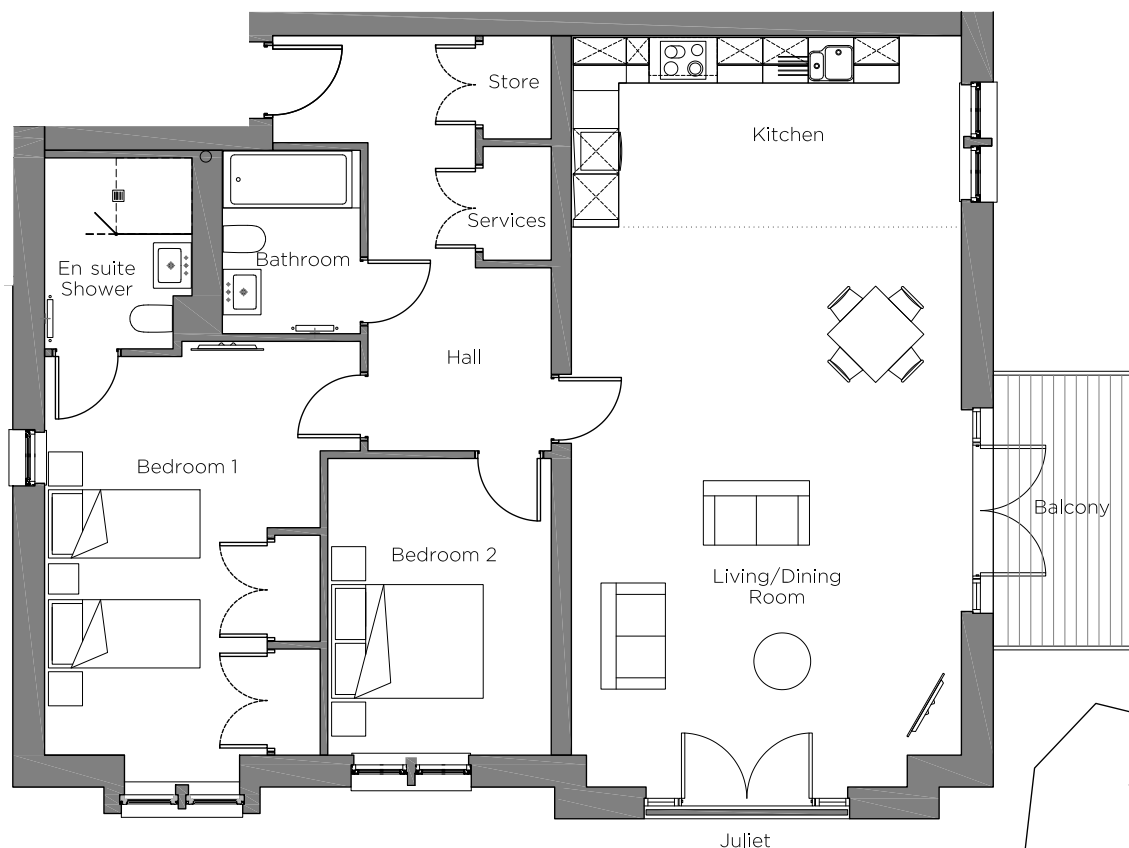


Audley Chalfont Dene

8 Skipping Way
First Floor Apartment
Plot 105



Internal Measurements

Metric (m)

Imperial (ft)

Kitchen/Living/Dining Room

9.49 x 5.14

31'2" x 16'1"

Bedroom 1

5.26 x 2.93

17'3" x 9'8"

Bedroom 2

3.91 x 2.95

12'10" x 9'8"

Balcony (approx)

3.57 x 1.84

11'9" x 6'1"

Audley Chalfont Dene,
Rickmansworth Lane,
Chalfont St Peter, Buckinghamshire SL9 0LX
01494 876 173
www.audleyvillages.co.uk

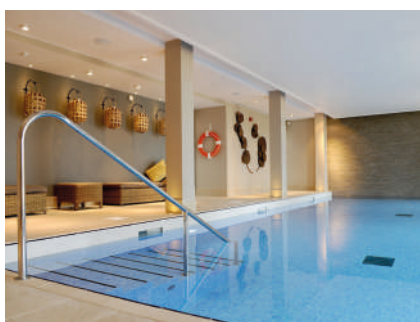
These floor plans are illustrative and for marketing purposes only. Maximum measurements are shown with longer dimension quoted first. Dimensions are quoted for the main area of the room only. Built-in wardrobes not included in the overall room dimensions. Furniture shown to illustrate possible room layouts and not included in sale. Designs vary according to plot. All details should be checked at the Sales Office.

29/11/2018



Audley Chalfont Dene

8 Skipping Way
First Floor Apartment
Plot 105



2 bedroom, first floor apartment

A first floor, two double bedroom apartment with a large open plan kitchen/living room with doors opening on to a south-facing balcony.

The master bedroom has an en suite shower room and double built-in wardrobe. Both bedrooms have south-facing views of the landscaped grounds.

The fully equipped SieMatic kitchen comes with Corian worktops and integrated appliances.

Property specifications:

- Luxury Villeroy & Boch bathrooms
- Open plan kitchen/living room with dining area
- South-facing bedrooms and balcony
- Carpeted and decorated throughout

Audley Chalfont Dene,
Rickmansworth Lane,
Chalfont St Peter, Buckinghamshire SL9 0LX
01494 876 173
www.audleyvillages.co.uk

