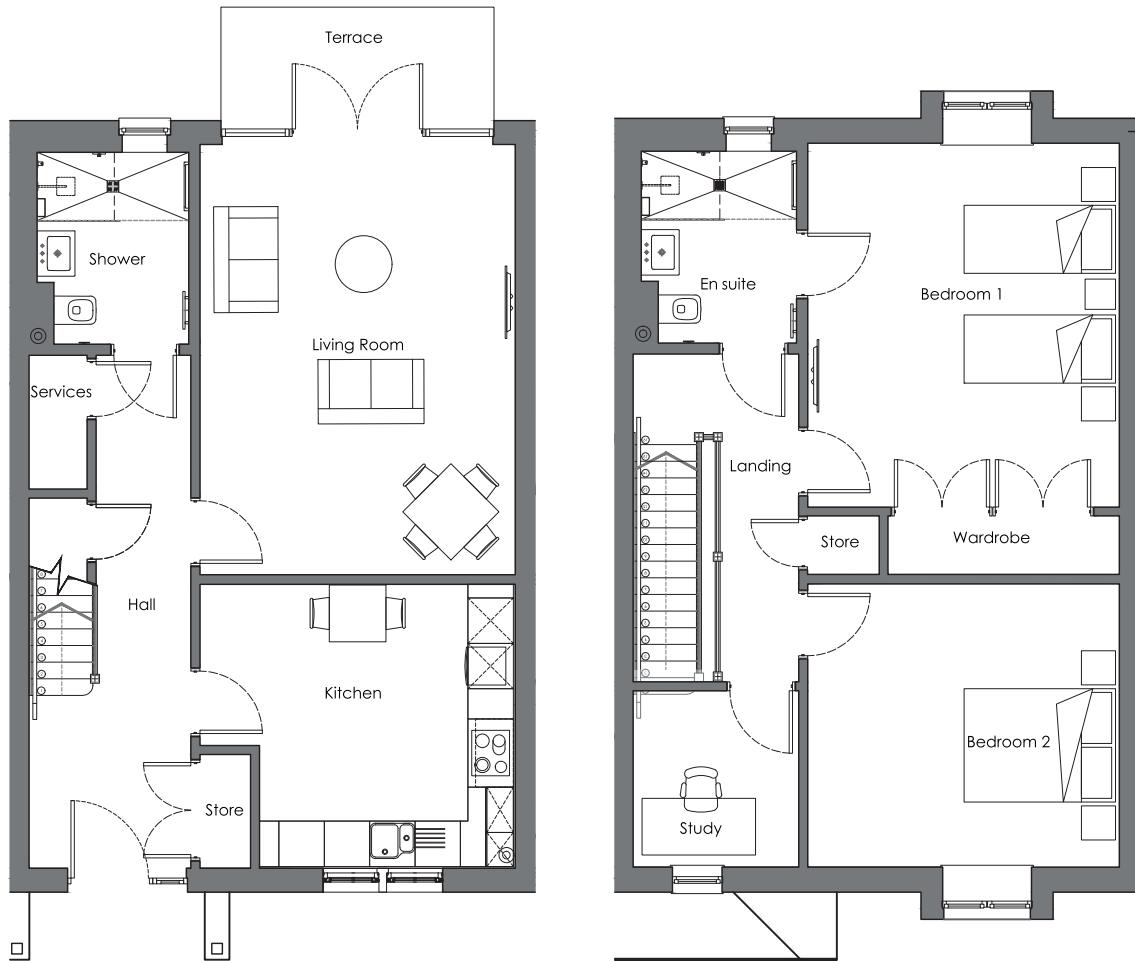


Audley Chalfont Dene

Plot 133, Block C2
4 Missenden Drive



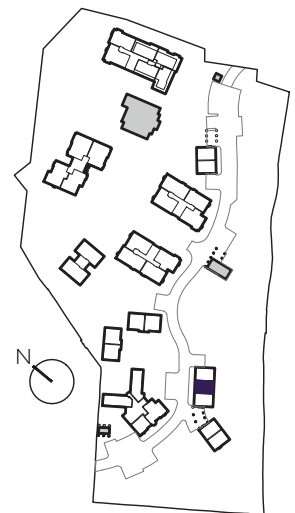
Internal Measurements

Metric (m)

Imperial (ft)

Living/Dining Room	5.69 x 4.17	18'8" x 13'8"
Kitchen	3.75 x 3.38	12'4" x 11'1"
Bedroom 1	4.81 x 4.12	15'9" x 13'6"
Bedroom 2	4.12 x 3.74	13'6" x 12'3"
Study	2.33 x 2.19	7'8" x 7'2"
Terrace (approx)	3.61 x 1.50	11'10" x 4'11"

Audley Chalfont Dene
Rickmansworth Lane
Chalfont St Peter, Buckinghamshire SL9 0LX
01494 876 173
www.audleyvillages.co.uk



These floor plans are illustrative and for marketing purposes only. Maximum measurements are shown with longer dimension quoted first. Dimensions are quoted for the main area of the room only. Built-in wardrobes not included in the overall room dimensions. Furniture shown to illustrate possible room layouts and not included in sale. Designs vary according to plot. All details should be checked at the Sales Office.

Audley Chalfont Dene

Plot 133, Block C2
4 Missenden Drive



3 bedroom, mid-terrace mews house

A 1,292 sq.ft. house split over two floors with two double bedrooms and study.

The living room has space for a dining table and chairs with doors opening to a secluded south-east facing terrace.

The large fully equipped SieMatic kitchen has Corian worktops and integrated appliances.

The large master bedroom has a luxury Villeroy & Boch bathroom and en suite shower room and double built-in wardrobes.

Property specifications:

- South-east facing terrace accessed from the living room
- Luxury Villeroy & Boch en suite to the master bedroom
- Additional downstairs shower room and WC
- Carpeted and decorated throughout



Audley Chalfont Dene,
Rickmansworth Lane,
Chalfont St Peter, Buckinghamshire SL9 0LX
01494 876 173
www.audleyvillages.co.uk

