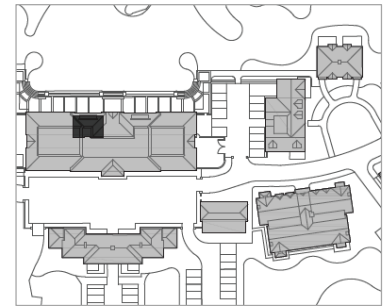
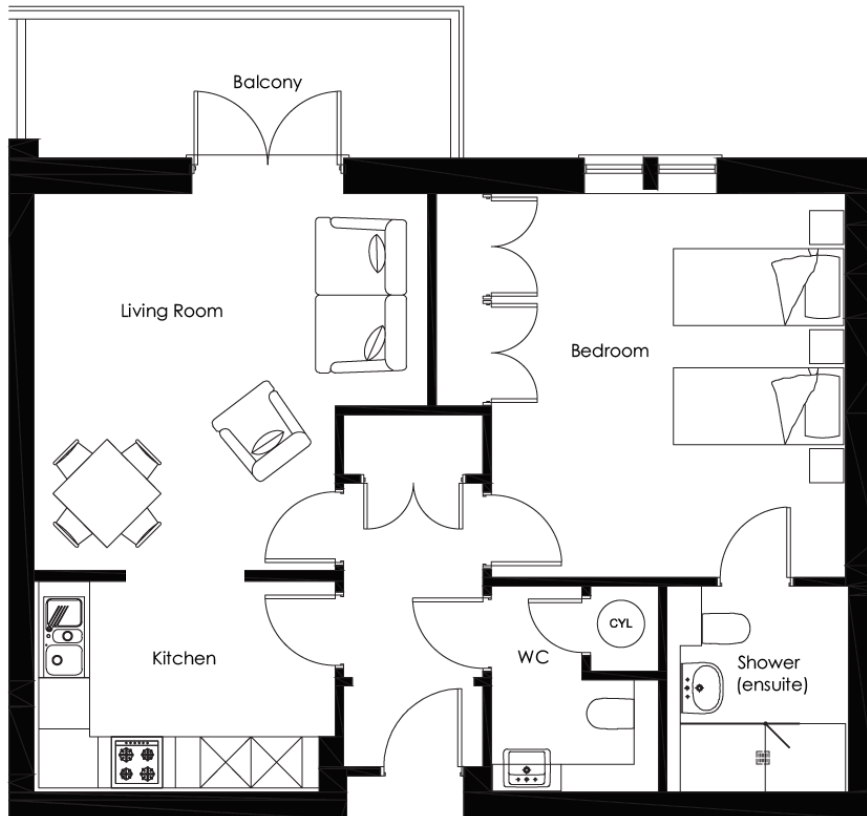


# Audley Chalfont Dene

4 Chalfont House  
One bedroom, first floor apartment



Internal Measurements	Metric (m)	Imperial (ft)
Living Room	4.63m x 4.43m	15'2" x 14'6"
Kitchen	3.54m x 2.48m	11'7" x 8'2"
Master Bedroom	4.51 x 4.17m	14'10" -x 13'8"

Score	Energy rating	Current	Potential
92+	A		
81-91	B	85   B	85   B
69-80	C		
55-68	D		
39-54	E		
21-38	F		
1-20	G		

Audley Chalfont Dene  
Rickmansworth Lane, Chalfont St Peter, Buckinghamshire SL9 0LX  
01494 876 173 chalfontsales@audleyvillages.co.uk  
www.audleyvillages.co.uk

Built in wardrobes in bedrooms have not been included in the overall dimensions.  
Maximum measurements shown. These pages are intended for marketing purposes only.  
Designs vary according to plot and all details should be checked at the Sales office.  
June 2021



# Audley Chalfont Dene

4 Chalfont House  
One bedroom, first floor apartment



## One bedroom apartment

This charming and spacious one bedroom apartment has a prime location on the first floor of Chalfont House, close to all the central village amenities. The bedroom and private balcony, accessed from the living/dining room, overlook the beautiful landscaped gardens and lake.

The bedroom has double built-in wardrobes, an en suite shower room and there is a guest WC, both with Villeroy & Boch sanitaryware. There is a modern SieMatic kitchen with integrated appliances and direct access into the living/dining room.

### Property specifications

- Prime location on the first floor in the main house, with lift access
- En suite shower room in the bedroom, and a guest WC
- Private balcony with outstanding views over the lake and gardens

**Guide Price £550,000** (other fees apply)

Monthly management fee: £831.55

Ground rent: £500 | Bistro credit: £57.35

Viewing by appointment with the sales office.

Audley Chalfont Dene  
01494 876 173 [chalfontsales@audleyvillages.co.uk](mailto:chalfontsales@audleyvillages.co.uk)  
[www.audleyvillages.co.uk](http://www.audleyvillages.co.uk)

