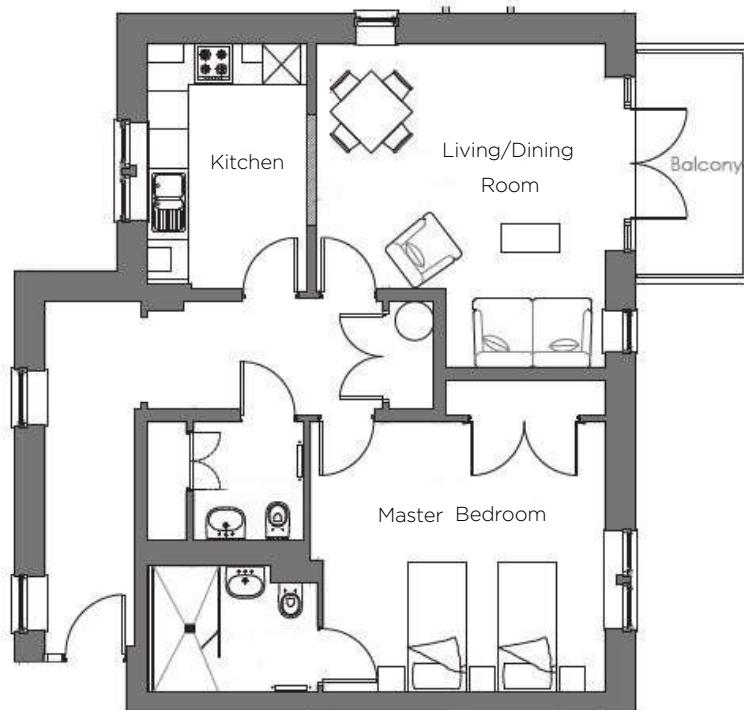


# Audley Chalfont Dene

3 Wilkens Place  
One Bedroom Pre-owned Apartment



## Internal Measurements

	Metric	Imperial
Living/Dining Room	4.99m x 4.47m	16'4" x 14'8"
Kitchen	3.78m x 2.48m	12'5" x 8'1"
Master Bedroom	4.35m x 4.17m	14'3" x 13'8"
Balcony	3.46m x 1.67m	11'4" x 5'6"
Apartment 851 Sq ft		
Apartment 79 m <sup>2</sup>		



Audley Chalfont Dene

Rickmansworth Lane, Chalfont St Peter SL9 0LX  
01494 876173 [chalfontsales@audleyvillages.co.uk](mailto:chalfontsales@audleyvillages.co.uk)  
[www.audleyvillages.co.uk](http://www.audleyvillages.co.uk)

Built-in wardrobes in bedrooms have not been included in the overall dimensions. Maximum measurements shown. These pages are intended for marketing purposes only. Designs vary according to plot and all details should be checked at the Sales Office. January 2019



# Audley Chalfont Dene

3 Wilkens Place  
One Bedroom Pre-owned Apartment



## One bed first floor apartment

A one bedroom first floor apartment set within the Wilkens Place area of Chalfont Dene retirement village. This property has a large lounge with doors opening to a balcony.

Property specifications:

- Large one bedroom apartment
- First floor with lift access
- Balcony overlooking the greenery and lake
- Close to Chalfont House and all its amenities
- Vacant possession



**Price £599,000 (other fees apply)**

Monthly Management Fee £836.87

Monthly Ground Rent: £500



Audley Chalfont Dene  
Rickmansworth Lane, Chalfont St Peter SL9 0LX  
01494 876173 [chalfontsales@audleyvillages.co.uk](mailto:chalfontsales@audleyvillages.co.uk)  
[www.audleyvillages.co.uk](http://www.audleyvillages.co.uk)

