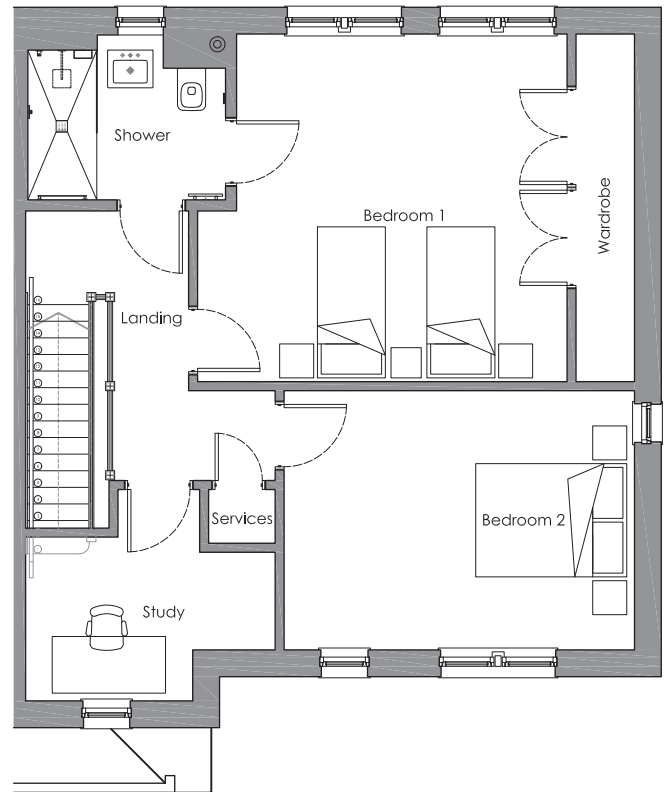
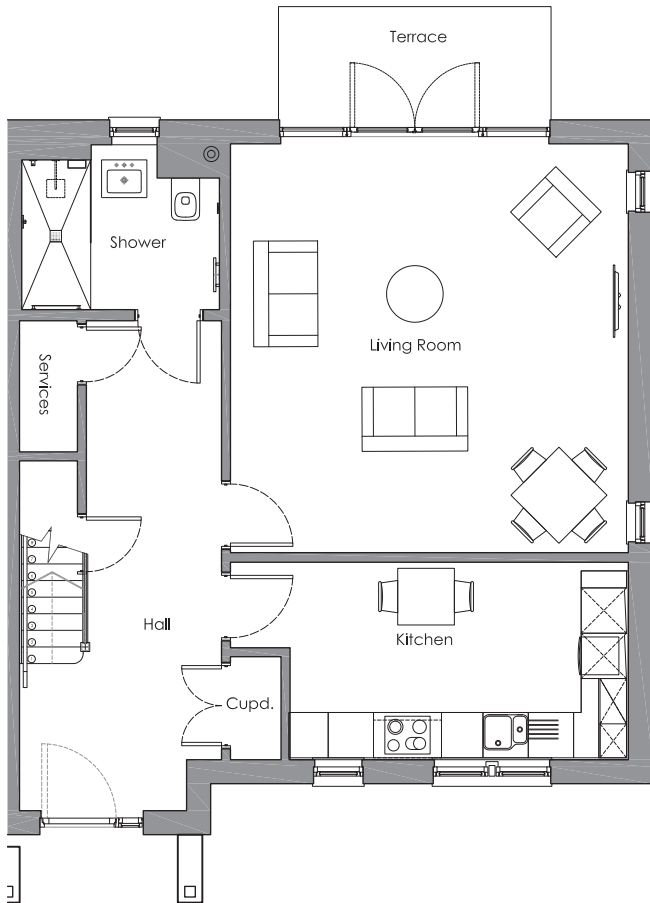


# Audley Chalfont Dene

Plot 131, Block C3  
2 Newland Cottages

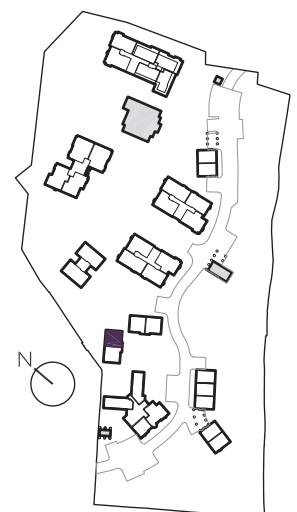


## Internal Measurements

## Metric (m)

## Imperial (ft)

Living/Dining Room	5.41 x 5.30	17'9" x 17'5"
Kitchen	4.48 x 2.61	14'8" x 8'7"
Bedroom 1	4.60 x 4.37	15'1" x 14'4"
Bedroom 2	4.64 x 3.43	15'3" x 11'3"
Study	3.30 x 2.17	10'10" x 7'1"
Terrace (approx)	3.61 x 1.50	11'10" x 4'11"

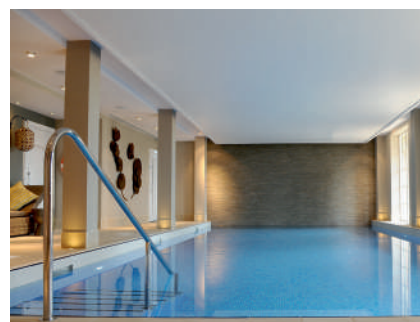
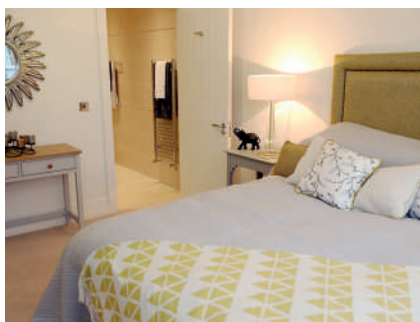


Audley Chalfont Dene  
Rickmansworth Lane  
Chalfont St Peter, Buckinghamshire SL9 0LX  
01494 876 173  
[www.audleyvillages.co.uk](http://www.audleyvillages.co.uk)

These floor plans are illustrative and for marketing purposes only. Maximum measurements are shown with longer dimension quoted first. Dimensions are quoted for the main area of the room only. Built-in wardrobes not included in the overall room dimensions. Furniture shown to illustrate possible room layouts and not included in sale. Designs vary according to plot. All details should be checked at the Sales Office.

# Audley Chalfont Dene

Plot 131, Block C3  
2 Newland Cottages



## 3 bedroom, semi-detached house

One of our largest semi-detached houses split over two floors with two double bedrooms and a study overlooking a landscaped village courtyard.

The dual-aspect master bedroom has a luxury Villeroy & Boch en suite shower room and double built-in wardrobes.

The living room, also dual-aspect, has space for a dining table and chairs with doors onto a secluded terrace.

The fully equipped SieMatic kitchen has Corian worktops and integrated appliances with double windows overlooking the courtyard.

Property specifications:

- Double built-in wardrobes in the master bedroom
- Additional downstairs shower room and WC
- Built in hallway/landing storage cupboards
- 1,399 sq.ft. split over two floors
- Carpeted and decorated throughout

Audley Chalfont Dene,  
Rickmansworth Lane,  
Chalfont St Peter, Buckinghamshire SL9 0LX  
01494 876 173  
[www.audleyvillages.co.uk](http://www.audleyvillages.co.uk)

