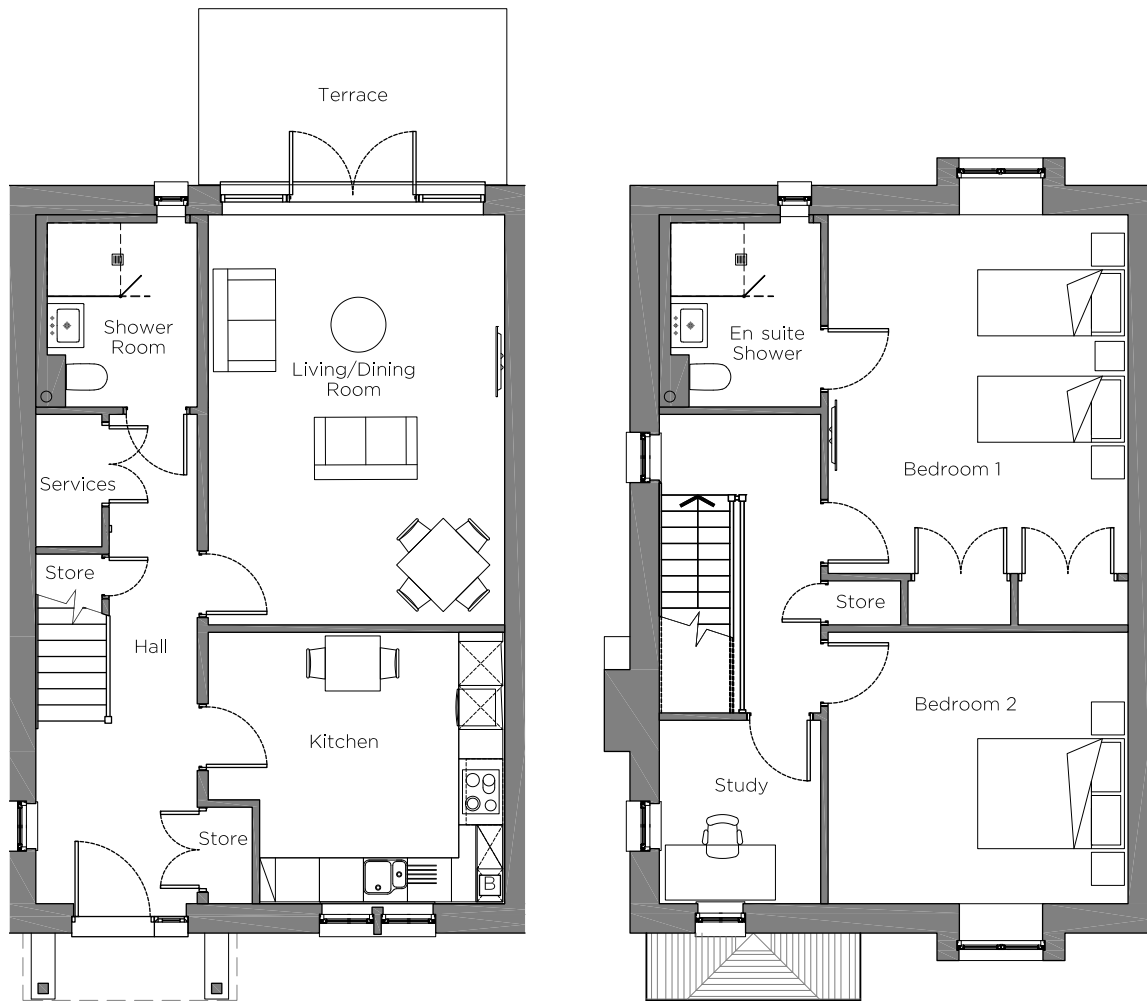


# Audley Chalfont Dene

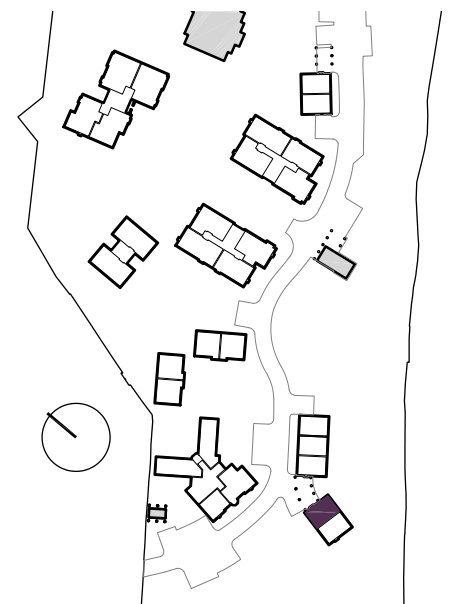
Plot 136, Block C1  
2 Missenden Drive



Internal Measurements	Metric (m)	Imperial (ft)
Living/Dining Room	5.59 X 4.04	18'4" X 13'3"
Kitchen	4.04 X 3.70	13'3" X 12'2"
Bedroom 1	4.89 X 4.09	16'1" X 13'5"
Bedroom 2	4.09 X 3.70	13'5" X 12'2"
Study	2.50 X 2.20	8'2" X 7'3"
Terrace (approx)	4.20 X 2.40	13'9" X 7'10"

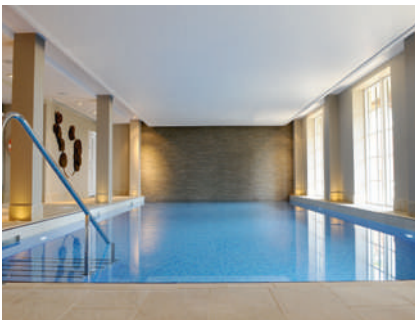
Audley Chalfont Dene,  
Rickmansworth Lane,  
Chalfont St Peter, Buckinghamshire SL9 0LX  
01494 876 173  
[www.audleyvillages.co.uk](http://www.audleyvillages.co.uk)

These floor plans are illustrative and for marketing purposes only. Maximum measurements are shown with longer dimension quoted first. Dimensions are quoted for the main area of the room only. Built-in wardrobes not included in the overall room dimensions. Furniture shown to illustrate possible room layouts and not included in sale. Designs vary according to plot. All details should be checked at the Sales Office.



# Audley Chalfont Dene

Plot 136, Block C1  
2 Missenden Drive



## 3 bedroom, semi-detached house

A semi-detached house split over two floors with two double bedrooms and a dual-aspect study.

The living room, with space for a dining table and chairs, has doors opening to a secluded east-facing terrace.

The large master bedroom has a luxury Villeroy & Boch en suite shower room and double built-in wardrobes.

The fully equipped SieMatic kitchen has Corian worktops and integrated appliances.

Property specifications:

- East-facing terrace accessed from the living/dining room
- Dual-aspect study
- Additional downstairs shower room and WC
- 1,292 sq.ft. split over two floors
- Carpeted and decorated throughout

Audley Chalfont Dene,  
Rickmansworth Lane,  
Chalfont St Peter, Buckinghamshire SL9 0LX  
01494 876 173  
[www.audleyvillages.co.uk](http://www.audleyvillages.co.uk)

