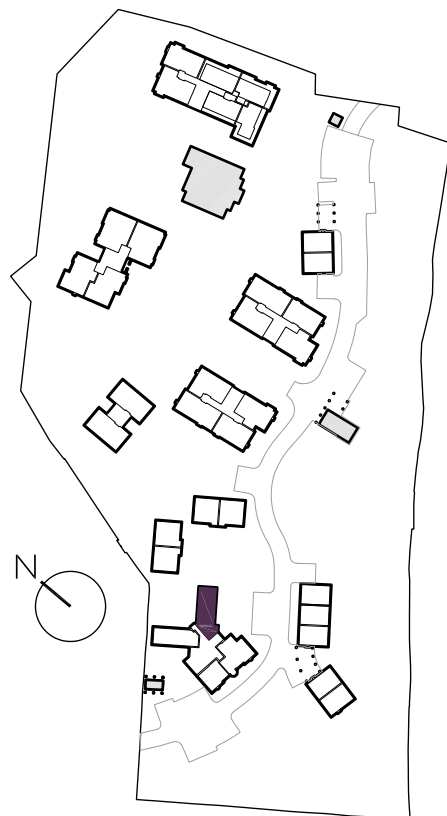
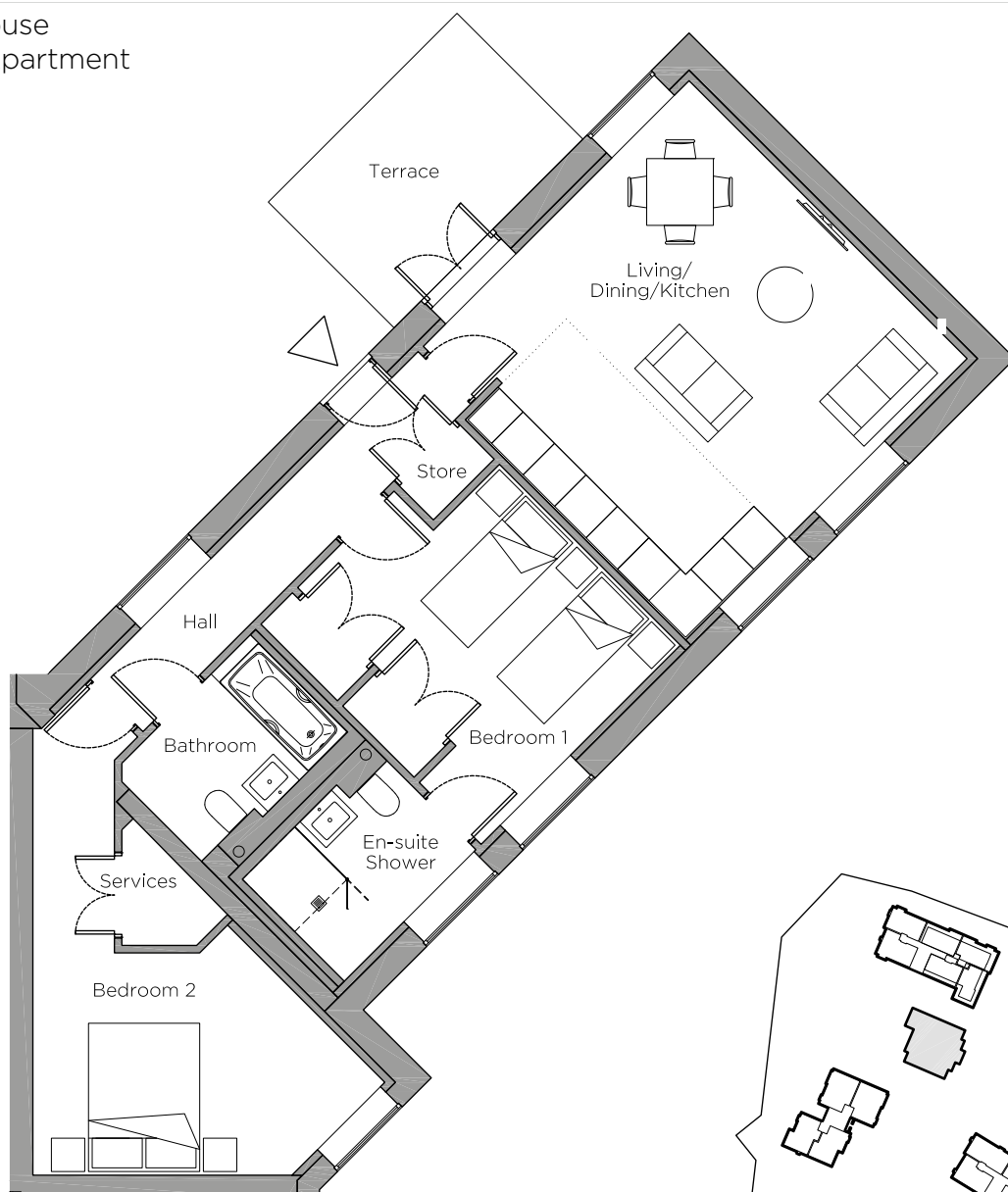


Audley Chalfont Dene

Rydinghurst House
Ground Floor Apartment
Plot 141



Internal Measurements	Metric (m)	Imperial (ft)
Living/Dining/Kitchen	5.37 x 5.30	17'7" x 17'5"
Bedroom 1	4.20 x 3.10	13'9" x 10'2"
Bedroom 2	3.33 x 3.00	10'11" x 9'10"
Terrace (approx)	3.60 x 2.40	11'10" x 7'10"

Audley Chalfont Dene
Rickmansworth Lane
Chalfont St Peter, Buckinghamshire SL9 0LX
01494 876173
www.audleyvillages.co.uk

These floor plans are illustrative and for marketing purposes only. Maximum measurements are shown with longer dimension quoted first. Dimensions are quoted for the main area of the room only. Built-in wardrobes not included in the overall room dimensions. Furniture shown to illustrate possible room layouts and not included in sale. Designs vary according to plot. All details should be checked at the Sales Office.

Audley Chalfont Dene

Rydinghurst House
Ground Floor Apartment
Plot 141



2 bedroom, ground floor apartment

A unique two bedroom ground floor apartment in the original Rydinghurst House, accessed via its own front door directly from the landscaped grounds.

The apartment has a dual aspect open plan living/dining room with patio doors opening to a secluded terrace.

The master bedroom has an en suite shower room and double built-in wardrobes, and a separate guest bathroom.

Property specifications:

- Unique property in the restored Rydinghurst House
- Open plan living/dining room
- Luxury Villeroy & Boch bathroom and en suite

Audley Chalfont Dene
Rickmansworth Lane, Chalfont St Peter, Buckinghamshire SL9 0LX
01494 876 173
www.audleyvillages.co.uk

