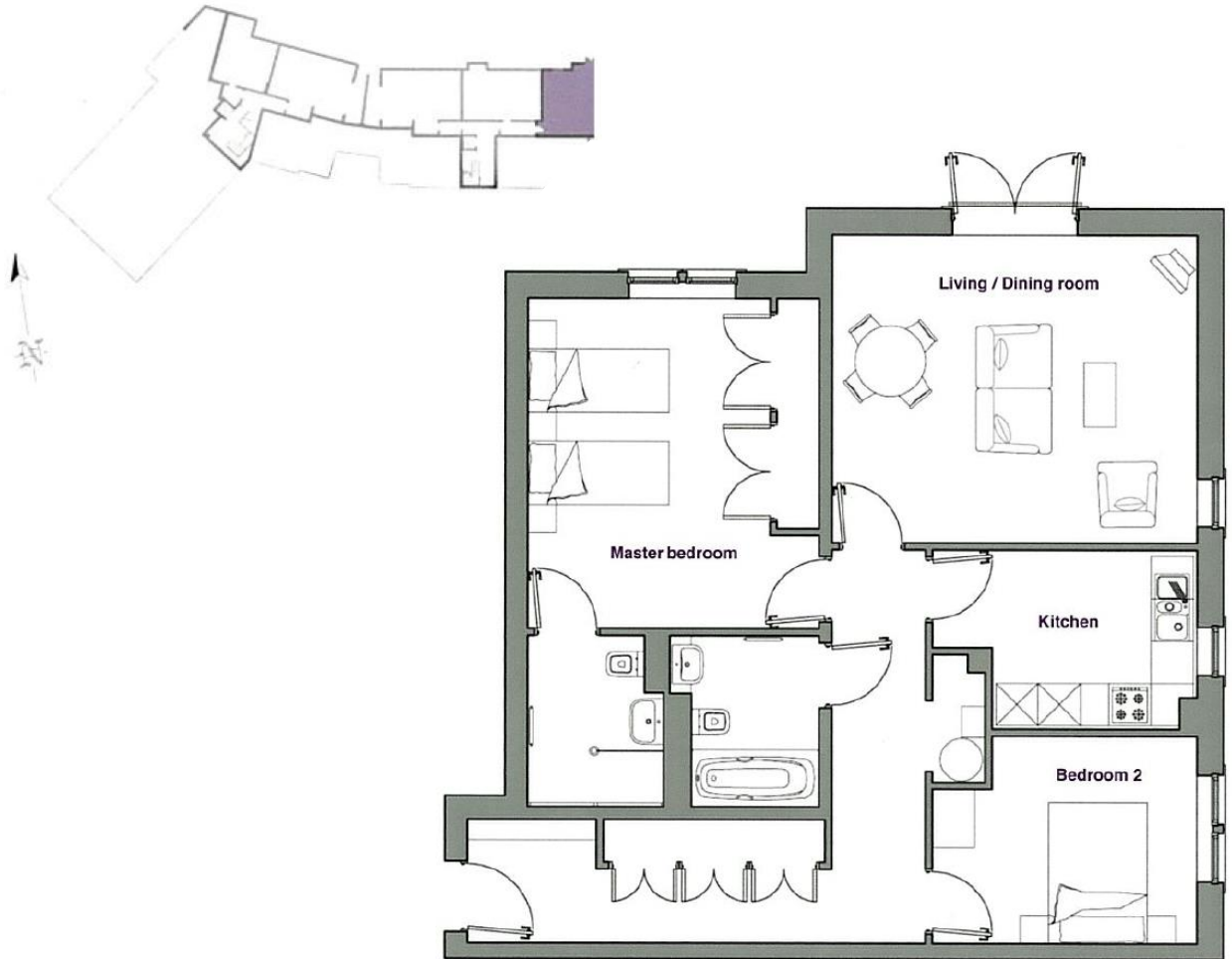


Audley Clevedon

19 Padgett Court

Two bedroom pre-owned ground floor apartment



Internal Measurements

Living/Dining Room

Metric (m)

6.16m x 4.20m

Imperial (ft)

20'3" x 13'9"

Kitchen

4.82m x 3.06m

15'10" x 10'1"

Master Bedroom

4.59m x 3.41m

15'1" x 11'3"

Bedroom Two

3.32m x 3.51m

10'11" x 9'10"

Total sq. ft: 936

Score	Energy rating	Current	Potential
92+	A		
81-91	B	83 B	83 B
69-80	C		
55-68	D		
39-54	E		
21-38	F		
1-20	G		

Audley Clevedon
 Ben Rhydding Drive, Ben Rhydding, Ilkley, LS29 8AQ
 01943 498 248 clevedonsales@audleyvillages.co.uk
 www.audleyvillages.co.uk

Built in wardrobes in bedrooms have not been included in the overall dimensions.
 Maximum measurements shown. These pages are intended for marketing purposes only.
 Designs vary according to plot and all details should be checked at the Sales office.

Audley Clevedon

19 Padgett Court

Two bedroom pre-owned ground floor apartment



Two bedroom ground floor apartment

The master bedroom in this two bedroom home in Padgett Court has built in wardrobes and an en suite shower room.

The SieMatic kitchen has Neff appliances and the dual aspect living room has doors out on to the terrace, with views over the Wharfe Valley.

Property specifications

- Generous master bedroom with an en suite shower room and built-in wardrobes
- Guest bedroom & bathroom
- Living room with doors on to a terrace
- Stunning views of the Wharfe Valley
- SieMatic kitchen with Neff appliances

£420,000 (other fees apply)

Monthly management fee £809.90

Bistro credit £68.85

Viewing by appointment with the sales office.

01943 498 248 clevedonsales@audleyvillages.co.uk

www.audleyvillages.co.uk

