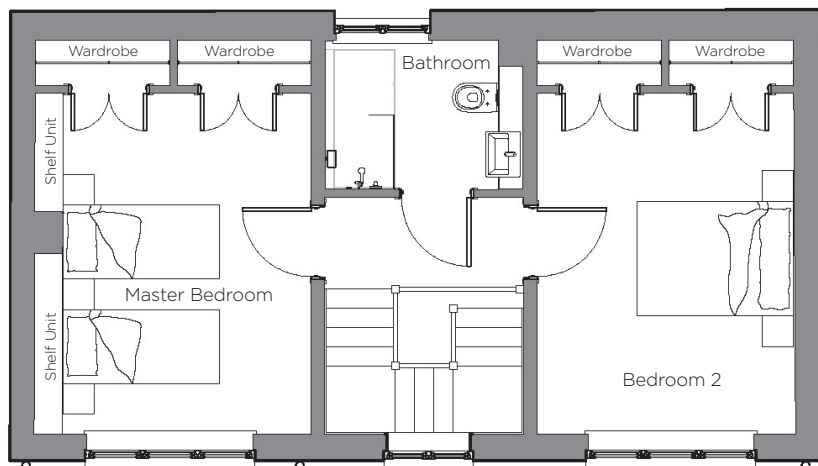
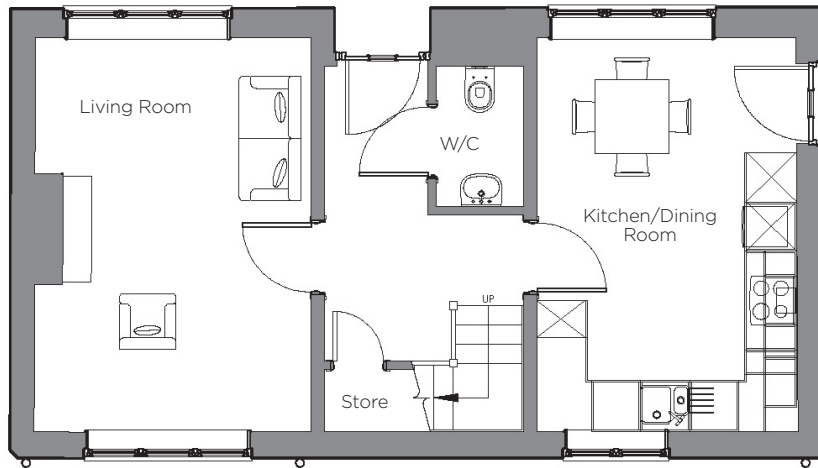
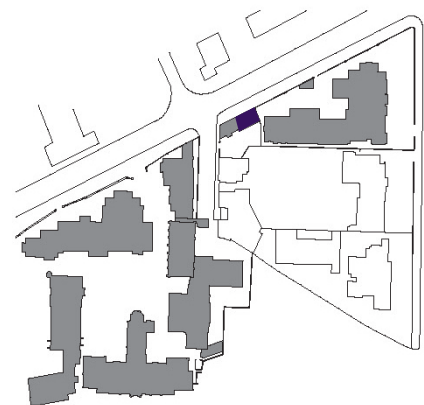


Audley Binswood

Cottage
Kenilworth Place, Plot 26



| Internal Measurements | Metric (m) | Imperial (ft) |
|-----------------------|-------------|---------------|
| Living Room | 4.81 x 3.37 | 15'8" x 11'1" |
| Kitchen/Dining Room | 4.81 x 3.16 | 15'8" x 10'4" |
| Master Bedroom | 4.16 x 3.03 | 13'6" x 9'9" |
| Bedroom 2 | 4.16 x 3.13 | 13'6" x 10'3" |



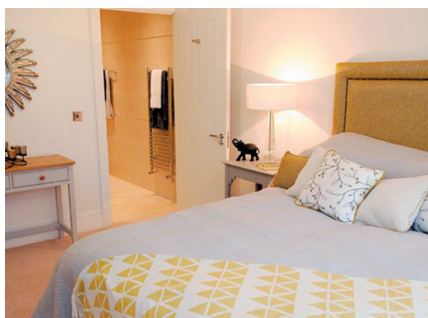
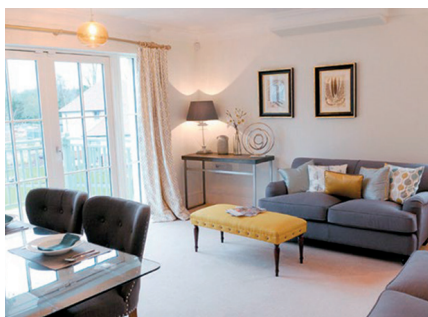
Audley Binswood
Binswood Avenue
Leamington Spa CV32 5SE
01926 339 484
www.audleyvillages.co.uk

Built-in wardrobes in bedrooms have not been included in the overall dimensions.
Maximum measurements shown. These pages are intended for marketing purposes only.
Designs vary according to plot and all details should be checked at the Sales Office.
March 2019



Audley Binswood

Cottage
Kenilworth Place, Plot 26



2 bedroom cottage

This beautiful two storey cottage offers a large kitchen and dining room with luxury fitted units and a stylish living room. Upstairs, both bedrooms have double fitted wardrobes and a spacious feel.

Property specifications:

- Private two storey cottage
- Master bedroom with built-in double wardrobes
- Second bedroom with built-in double wardrobes
- Spacious living room
- Beautiful SieMatic kitchen with Corian worktops

Audley Binswood
Binswood Avenue
Leamington Spa CV32 5SE
01926 339 484
www.audleyvillages.co.uk

