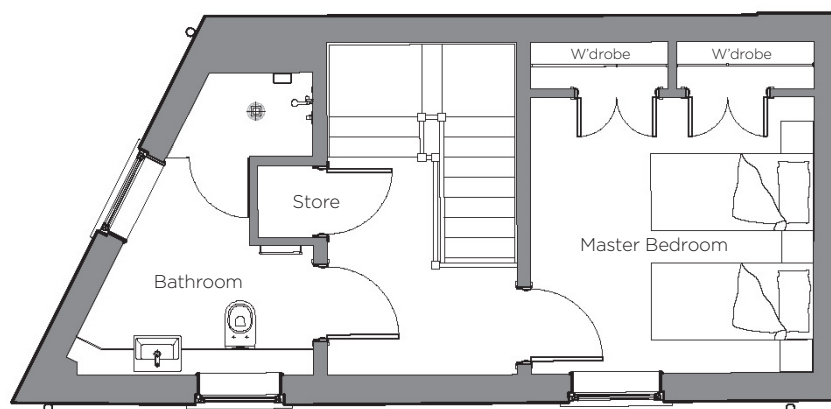
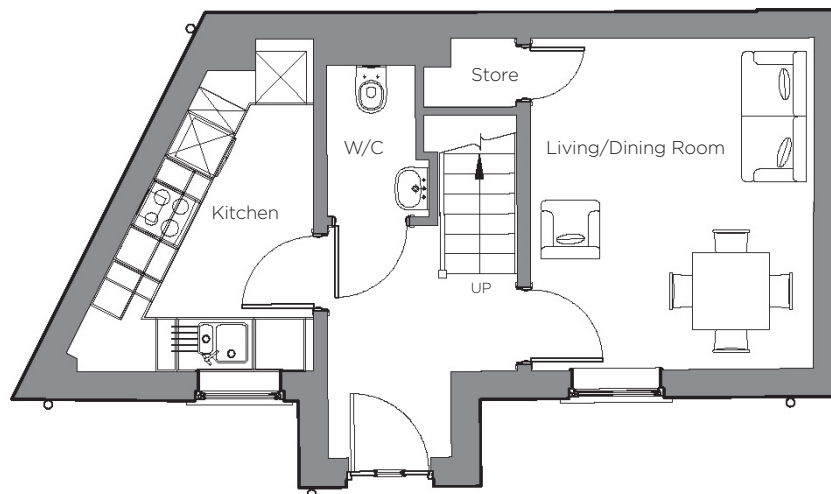
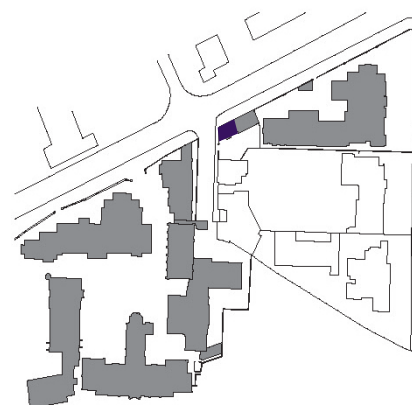


Audley Binswood

Cottage
Kenilworth Place, Plot 25



Internal Measurements	Metric (m)	Imperial (ft)
Living/Dining Room	3.88 x 3.31	12'7" x 10'8"
Kitchen	3.52 x 2.00	11'5" x 6'6"
Master Bedroom	3.30 x 3.23	10'8" x 10'6"



Audley Binswood
Binswood Avenue
Leamington Spa CV32 5SE
01926 339 484
www.audleyvillages.co.uk

Built-in wardrobes in bedrooms have not been included in the overall dimensions.
Maximum measurements shown. These pages are intended for marketing purposes only.
Designs vary according to plot and all details should be checked at the Sales Office.
March 2019

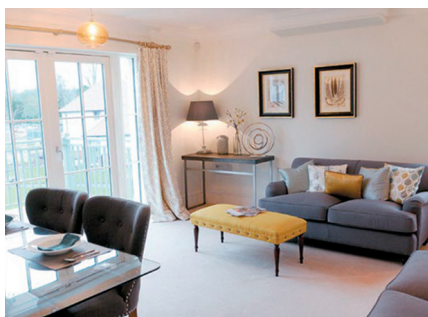


Audley Binswood

Cottage
Kenilworth Place, Plot 25



CGI for illustration purposes only



1 bedroom cottage

Nestled to closed to the main Audley Binswood site, this cottage is a perfect one bedroom home. The luxury kitchen is fitted with SieMatic handleless units and Neff appliances, while the bathroom is Villeroy & Boch.

Property specifications:

- Private two storey cottage
- Master bedroom with built-in double wardrobes
- Spacious living room with dining space
- Beautiful SieMatic kitchen with Corian worktops

Audley Binswood
Binswood Avenue
Leamington Spa CV32 5SE
01926 339 484
www.audleyvillages.co.uk

