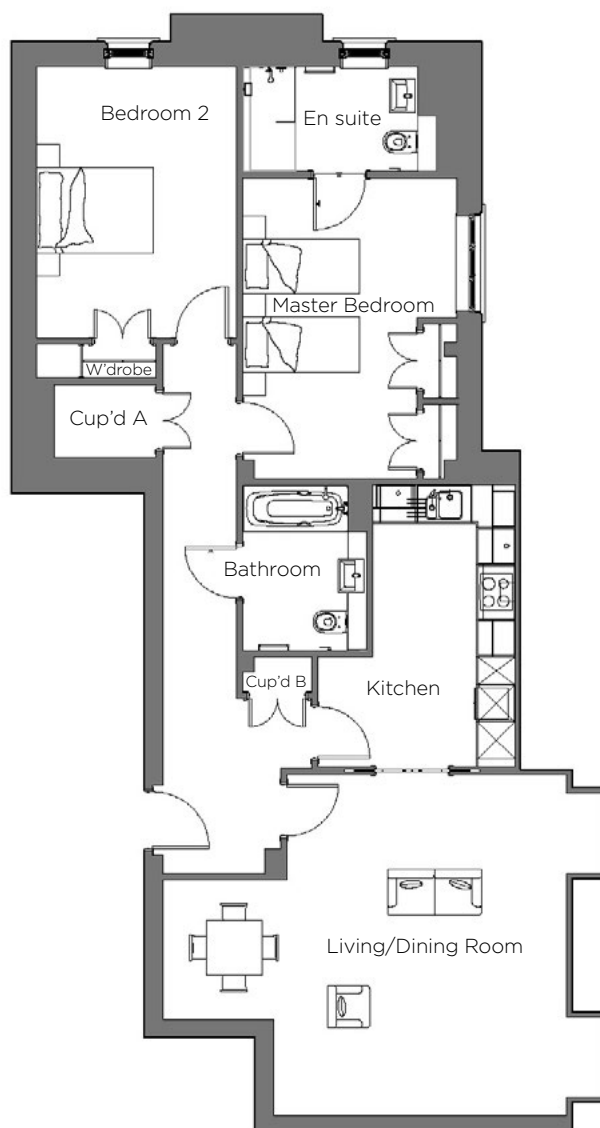
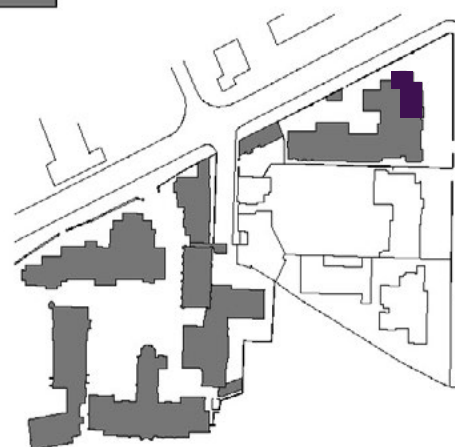


Audley Binswood

Third Floor Apartment
Kenilworth Place, Plot 23



Internal Measurements	Metric (m)	Imperial (ft)
Living/Dining Room	6.55 x 5.54	21'49" x 118'18"
Kitchen	4.58 x 2.31	15'03" x 7'58"
Master Bedroom	4.87 x 3.48	15'98" x 11'42"
Bedroom 2	4.41 x 3.25	14'47" x 10'66"



Audley Binswood
Binswood Avenue
Leamington Spa CV32 5SE
01926 339 484
www.audleyvillages.co.uk

Built-in wardrobes in bedrooms have not been included in the overall dimensions.
Maximum measurements shown. These pages are intended for marketing purposes only.
Designs vary according to plot and all details should be checked at the Sales Office.
March 2019



Audley Binswood

Third Floor Apartment
Kenilworth Place, Plot 23

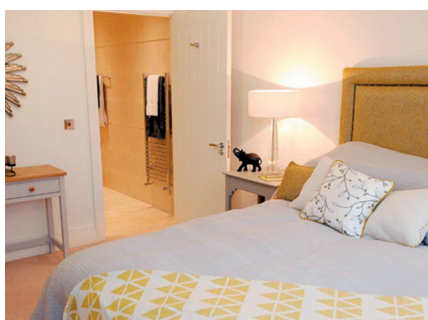


2 bedroom, third floor apartment

This superb two bedroom apartment is located on the third floor and has a beautifully designed layout. The open and spacious living room opens up to the well fitted dining space and luxury SieMatic kitchen.

Property specifications:

- Beautiful SieMatic kitchen with Corian worktops
- Spacious living room with dining space
- Two storage cupboards in hallway
- Master bedroom with double fitted wardrobes and en suite shower room
- Second double bedroom
- Separate bathroom



Audley Binswood
Binswood Avenue
Leamington Spa CV32 5SE
01926 339 484
www.audleyvillages.co.uk

