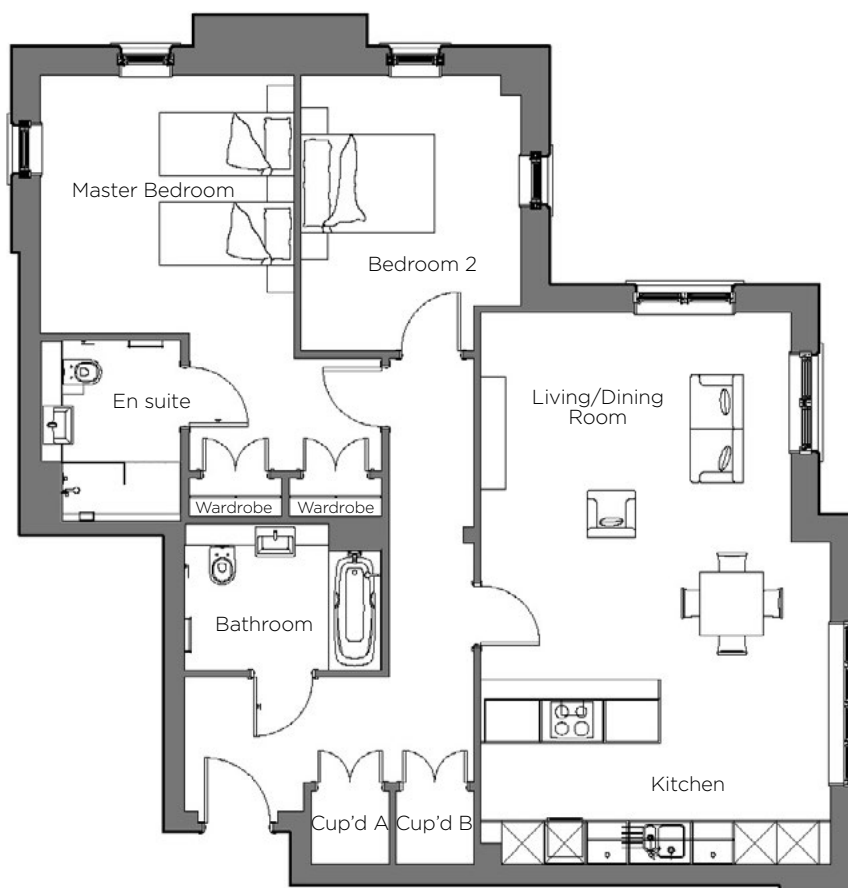
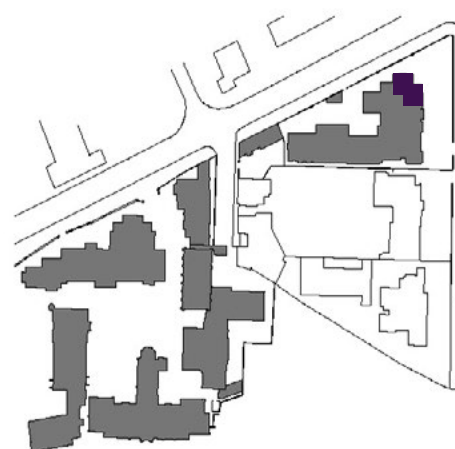


Audley Binswood

First Floor Apartment
Kenilworth Place, Plot 13



| Internal Measurements | Metric (m) | Imperial (ft) |
|-----------------------|-------------|-----------------|
| Living/Dining/Kitchen | 7.84 x 4.97 | 25'72" x 16'31" |
| Master Bedroom | 7.84 x 4.97 | 12'04" x 11'81" |
| Bedroom 2 | 3.92 x 3.13 | 12'86" x 10'27" |



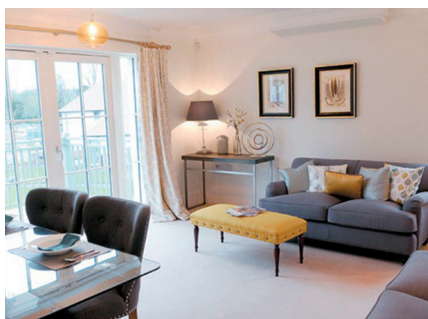
Audley Binswood
Binswood Avenue
Leamington Spa CV32 5SE
01926 339 484
www.audleyvillages.co.uk

Built-in wardrobes in bedrooms have not been included in the overall dimensions.
Maximum measurements shown. These pages are intended for marketing purposes only.
Designs vary according to plot and all details should be checked at the Sales Office.
March 2019



Audley Binswood

First Floor Apartment
Kenilworth Place, Plot 13



2 bedroom, first floor apartment

This elegant two bedroom apartment offers an elegant design and best in class fittings. The open plan living/dining room and kitchen have a light and airy feel.

Property specifications:

- Spacious living room with dining space
- Two storage cupboards in hallway
- Master bedroom with double fitted wardrobes and en suite shower room
- Second double bedroom
- Beautiful SieMatic kitchen with Corian worktops
- Separate bathroom

Audley Binswood
Binswood Avenue
Leamington Spa CV32 5SE
01926 339 484
www.audleyvillages.co.uk

