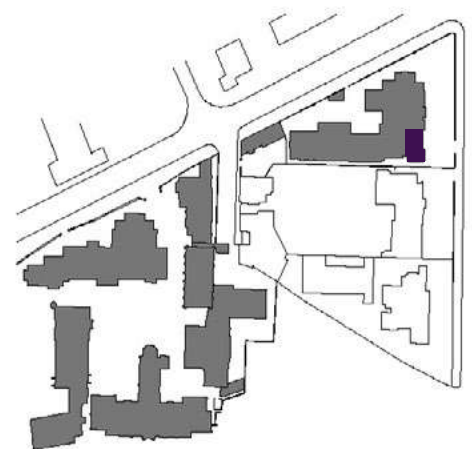


Audley Binswood

First Floor Apartment
Kenilworth Place, Plot 14



Internal Measurements	Metric (m)	Imperial (ft)
Living/Dining Room	5.72 x 4.03	18'77" x 13'22"
Kitchen	3.47 x 2.47	18'77" x 8'10"
Master Bedroom	4.40 x 3.13	14'44" x 10'27"
Bedroom 2	3.92 x 2.56	12'86" x 8'40"



Audley Binswood
Binswood Avenue
Leamington Spa CV32 5SE
01926 339 484
www.audleyvillages.co.uk

Built-in wardrobes in bedrooms have not been included in the overall dimensions.
Maximum measurements shown. These pages are intended for marketing purposes only.
Designs vary according to plot and all details should be checked at the Sales Office.
March 2019

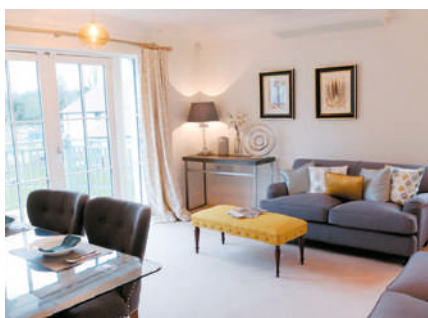
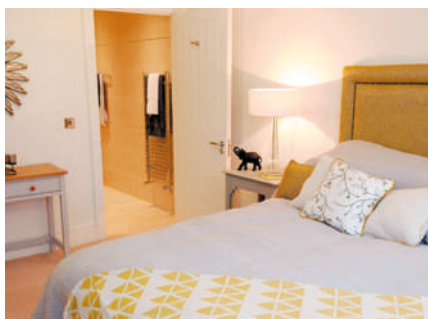


Audley Binswood

First Floor Apartment
Kenilworth Place, Plot 14



CGI for illustration purposes only



2 bedroom, first floor apartment

A unique first floor two bedroom apartment offering both space and elegance. Fitted with a large Villeroy & Boch en suite shower room from the master bedroom and a beautiful SieMatic kitchen adjacent to a spacious living/dining room.

Property specifications:

- Spacious living room with dining space
- Two storage cupboards in hallway
- Master bedroom with double fitted wardrobes and en suite shower room
- Second double bedroom
- Beautiful SieMatic kitchen with Corian worktops
- Separate bathroom

Audley Binswood
Binswood Avenue
Leamington Spa CV32 5SE
01926 339 484
www.audleyvillages.co.uk



Photos for illustration purposes only