

# 10 Brunswick House





# 10 Brunswick House

## One bedroom ground floor apartment

This well-appointed one bedroom ground floor apartment enjoys a west-facing patio that can be accessed from the spacious living room. There is a separate kitchen with modern integrated appliances, a guest W.C. and ample storage facilities in the hallway. The apartment is perfectly finished by a master bedroom with fitted wardrobes and an en suite shower room.

### Property specifications

- Living room with dual French doors that offer access to the west-facing patio
- Master bedroom with fitted wardrobes and an en suite shower room with Villeroy & Boch sanitaryware
- Luxury SieMatic kitchen with integrated appliances
- Good storage facilities
- Located close to the central village amenities

**Guide Price £299,950** (other fees apply)

Monthly management fee £807.83

Annual ground rent £500

Monthly bistro credit: £59.84

Council Tax Band: C

Viewing by appointment with the sales office.

**01926 339 484**

**[binswoodsales@audleyvillages.co.uk](mailto:binswoodsales@audleyvillages.co.uk)**

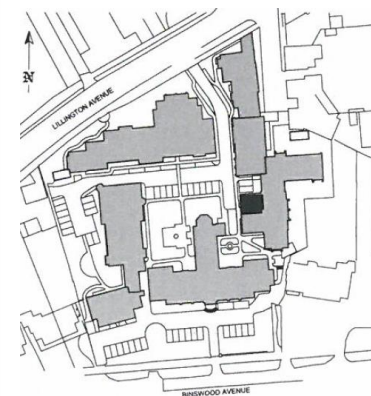
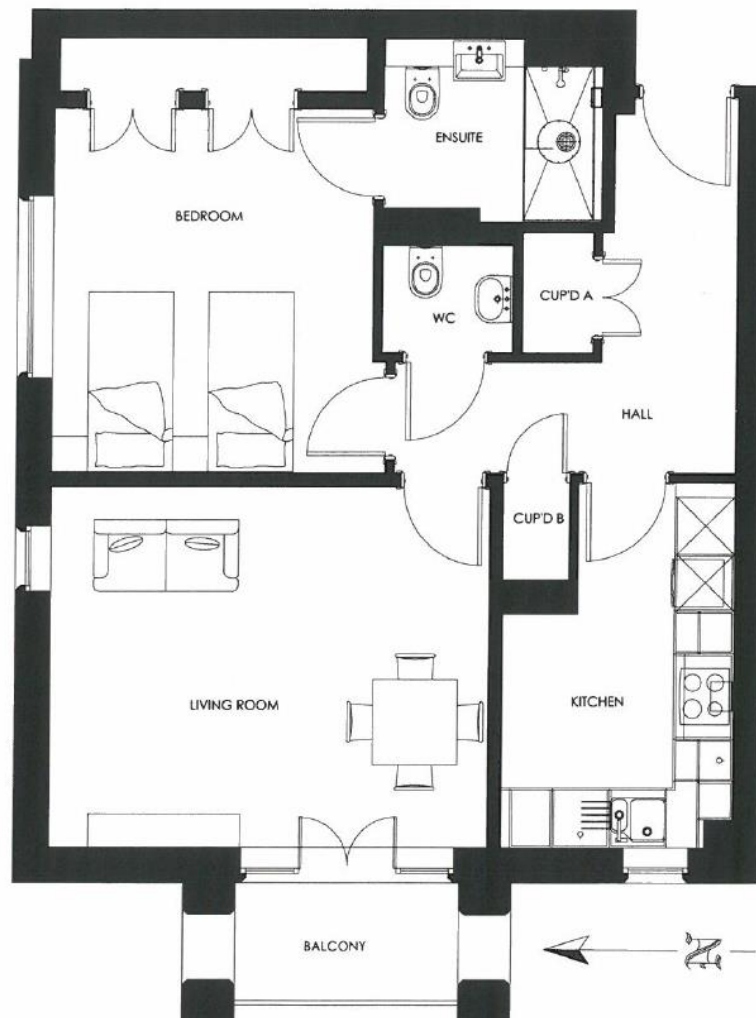
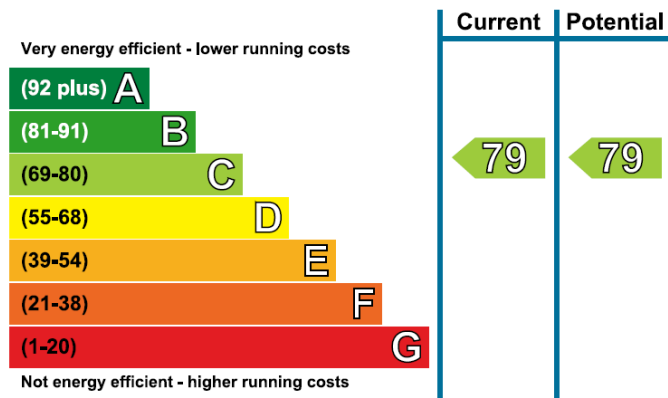


# 10 Brunswick House

## Internal Measurements

	Metric (m)	Imperial (ft)
Living Room	4.64 x 3.81	15'3" x 12'6"
Kitchen	3.86 x 2.44	12'8" x 8'0"
Bedroom	3.84 x 3.38	12'7" x 11'1"
Sq. ft 654		

Built in wardrobes in bedrooms have not been included in the overall dimensions. Maximum measurements shown.



These pages are intended for marketing purposes only. Designs vary according to plot and all details should be checked at the Sales office. September 2021



