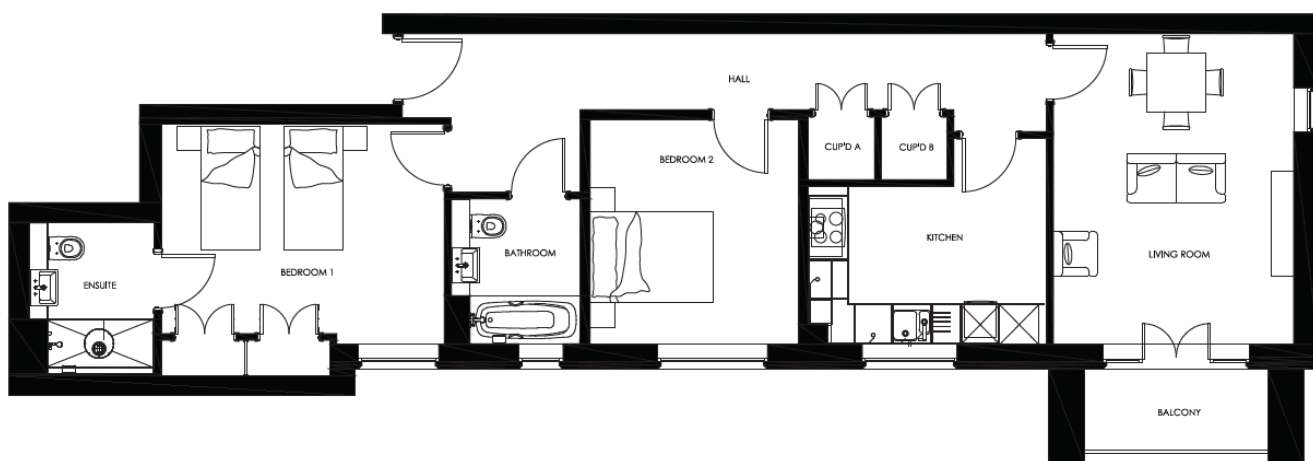
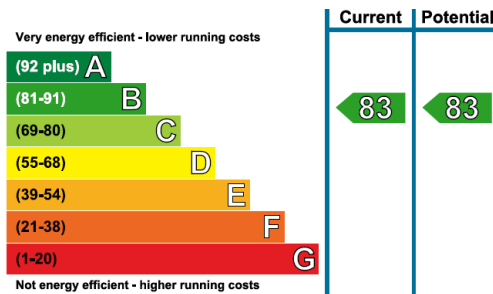


# Audley Binswood

4 Brunswick House  
Two bedroom pre-owned first floor apartment



Internal Measurements	Metric (m)	Imperial (ft)
Living/Dining Room	4.78 x 3.71	15'8" x 12'2"
Kitchen	3.63 x 3.17	11'11" x 10'5"
Master Bedroom	4.36 x 3.22	14'3" x 10'7"
Bedroom 2	3.46 x 3.21	11'4" x 10'6"
Total Sq.ft	902	



Audley Binswood  
Binswood Avenue  
Leamington Spa, CV32 5SE  
01926 339 484 binswoodsales@audleyvillages.co.uk  
www.audleyvillages.co.uk

Built in wardrobes in bedrooms have not been included in the overall dimensions.  
Maximum measurements shown. These pages are intended for marketing purposes only.  
Designs vary according to plot and all details should be checked at the Sales office.  
March 2021



# Audley Binswood

4 Brunswick House

Two bedroom pre-owned first floor apartment



## Two bedroom first floor apartment

A light and spacious two bedroom apartment that is located on the first floor of Brunswick House. This property boasts two double bedrooms with the Master bedroom benefiting from fitted wardrobes and an en suite shower room. The kitchen has integrated Neff and Bosch appliances and the light and spacious living room is further enhanced by a large private balcony overlooking the courtyard gardens.

### Property specifications

- Spacious master bedroom with an en suite shower room
- Second guest bedroom and family bathroom
- Separate living room with access onto large private balcony overlooking courtyard gardens
- Conveniently located to Binswood Hall and central facilities

**Guide Price £440,000** (other fees apply)

Monthly management fee £807.83

Annual ground rent £500

Monthly bistro credit: £59.84

Viewing by appointment with the sales office.

Audley Binswood  
Binswood Avenue  
Leamington Spa, CV32 5SE  
01926 339 484 binswoodsales@audleyvillages.co.uk  
www.audleyvillages.co.uk

