

22 Walton Court



22 Walton Court

Two bedroom second floor apartment

This well proportioned two bedroom dual aspect apartment has a spacious living/dining room with Juliet balcony. The modern kitchen comes with integrated Neff and Bosch appliances, and the west-facing bedroom has fitted wardrobes and a luxury en suite shower room.

Property specifications

- Well presented, as-new condition
- Juliet balcony in the living/dining room
- Two double bedrooms, with an en suite shower room in the main bedroom
- Additional bathroom with a full-sized bath
- Separate SieMatic kitchen with integrated Neff and Bosch appliances
- Lift access
- Located close to the main facilities

Guide Price £420,000 (other fees apply)

Monthly management fee £910.36

Annual ground rent £500

Bistro credit: £64.09

Council Tax Band: D

Viewing by appointment with the sales office.

01926 339 484

binswoodsales@audleyvillages.co.uk

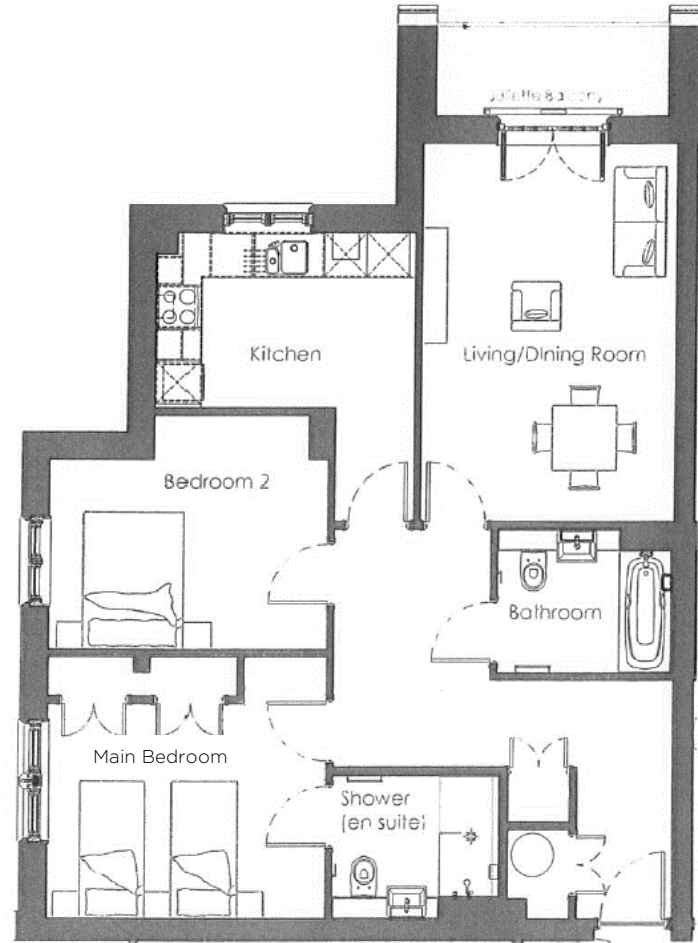


22 Walton Court

Internal Measurements	Metric (m)	Imperial (ft)
Living/Dining Room	5.25 x 3.58	17'3" x 11'9"
Kitchen	3.61 x 2.46	11'10" x 8'1"
Main Bedroom	3.88 x 2.98	12'9" x 9'9"
Bedroom 2	3.88 x 2.63	12'9" x 8'8"
Total sq. ft: 896		

Built in wardrobes in bedrooms have not been included in the overall dimensions. Maximum measurements shown.

Score	Energy rating	Current	Potential
92+	A		
81-91	B	85 B	85 B
69-80	C		
55-68	D		
39-54	E		
21-38	F		
1-20	G		



These pages are intended for marketing purposes only. Designs vary according to plot and all details should be checked at the Sales office. April 2022.

