

Audley Willicombe Park

6 Beech Court
Ground Floor Apartment

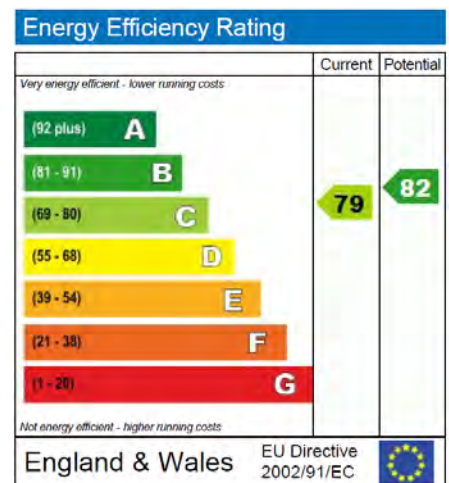


Internal Measurements

	Metric (m)	Imperial (ft)
Living/Dining Room	5.00m x 4.30m	16'5" x 14'
Kitchen	3.50m x 3.20m	11'7" x 10'5"
Master Bedroom	5.00m x 3.20m	16'5" x 10'6"
Bedroom 2	3.50m x 2.60m	17'7" x 8'4"
Utility room	2.10m x 1.70m	6'9" x 5'6"

Audley Willicombe Park
Willicombe House, Royal Tunbridge Wells, Kent TN2 3UU
01892 457996 willicombesales@audleyretirement.co.uk
www.audleyvillages.co.uk

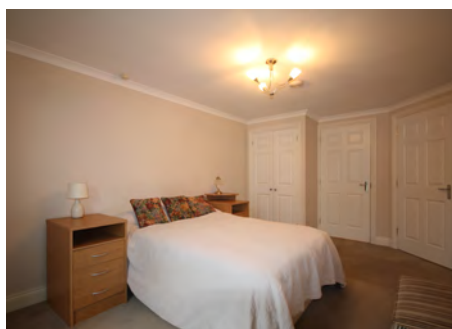
Built-in wardrobes in bedrooms have not been included in the overall dimensions.
Maximum measurements shown. These pages are intended for marketing purposes only.
Designs vary according to plot and all details should be checked at the Sales Office.
November 2017



GOOD MOVE

Audley Willicombe Park

6 Beech Court
Ground Floor Apartment



2 bed ground floor apartment

Recently redecorated, this spacious 2 bedroom apartment is located on the ground floor of Beech Court, moments from Willicombe House and its amenities.

Property specifications:

- Fitted separate kitchen
- Large living/dining room
- Master bedroom with en-suite
- Second bedroom and family shower room
- Utility room & large hallway

Price **£360,000** (other fees apply)

Viewings by appointment with the sales office

Audley Willicombe Park
Willicombe House, Royal Tunbridge Wells, Kent TN2 3UU
01892 457996 willicombesales@audleyretirement.co.uk
www.audleyvillages.co.uk

Photos for illustration purposes only



GOOD MOVE