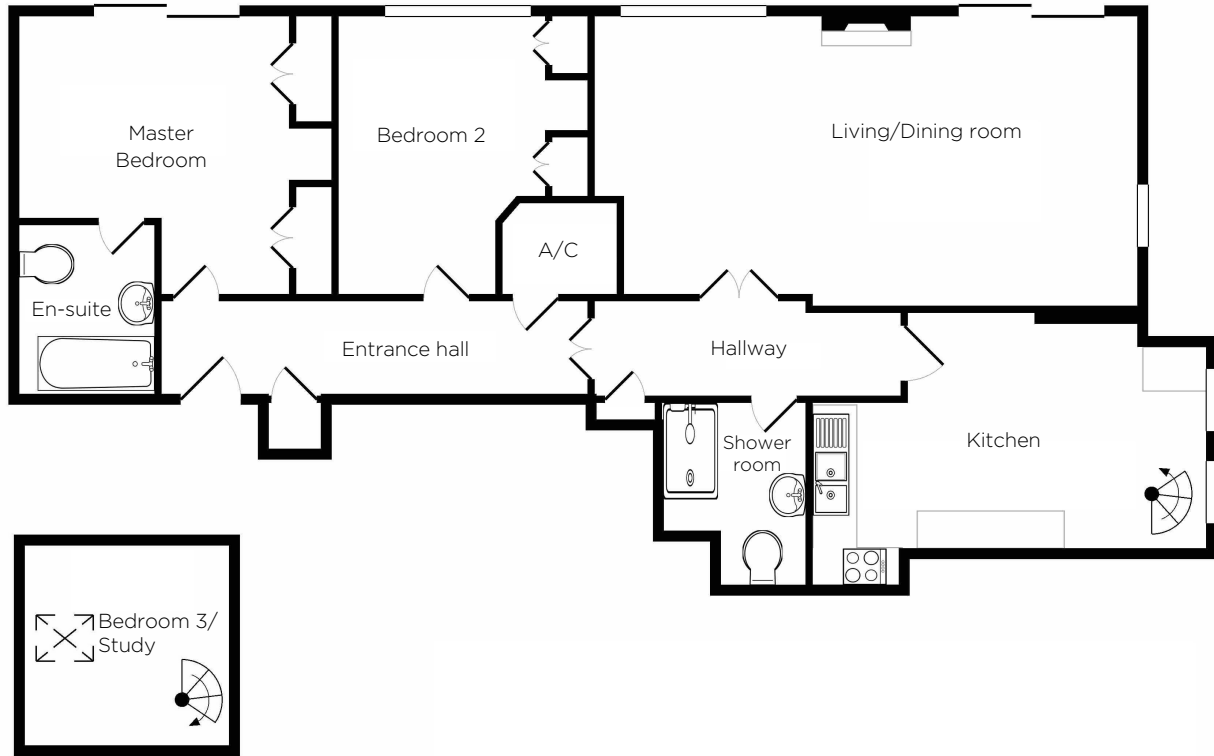


Audley Willicombe Park

22 Beech Court
3 Bedroom Resale Penthouse



Internal Measurements

Living/Dining Room
Kitchen
Master bedroom
Bedroom 2
Bedroom 3/Study

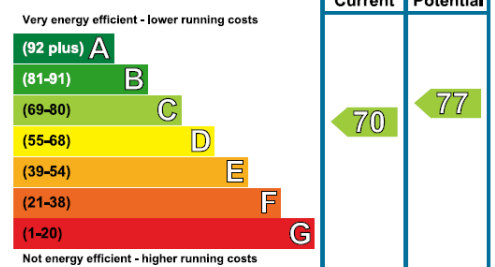
Metric (m)

7.50m x 4.10m
5.50m x 3.30m
4.40m x 3.90m
3.90m x 3.50m
2.90m x 2.90m

Imperial (ft)

24'9" x 13'5"
18' x 10'11"
14'5" x 12'10"
12'10" x 11'6"
9'5" x 9'5"

Energy Efficiency Rating



Audley Willicombe Park
Willicombe House, Royal Tunbridge Wells, Kent TN2 3UU
01892 457996 willicombesales@audleyvillages.co.uk
www.audleyvillages.co.uk

Built-in wardrobes in bedrooms have not been included in the overall dimensions.
Maximum measurements shown. These pages are intended for marketing purposes only.
Designs vary according to plot and all details should be checked at the Sales Office.
July 2017



Audley Willicombe Park

22 Beech Court
3 Bedroom Resale Penthouse



3 bed penthouse

Located in Beech Court, this large three bedroom, recently decorated penthouse complete with newly fitted carpets has a large living/dining area, opening onto a balcony overlooking the landscaped gardens of Willicombe Park. The kitchen is separate, with a breakfast room.



The third bedroom/study is in the clock tower, accessed via a spiral staircase, there is also an allocated parking space.

Price £650,000 (other fees apply)

Monthly Management Fee £993.99

Annual Ground Rent £100



Viewings by appointment with the sales office

Audley Willicombe Park
Willicombe House, Royal Tunbridge Wells, Kent TN2 3UU
01892 457996 willicombesales@audleyvillages.co.uk
www.audleyvillages.co.uk

