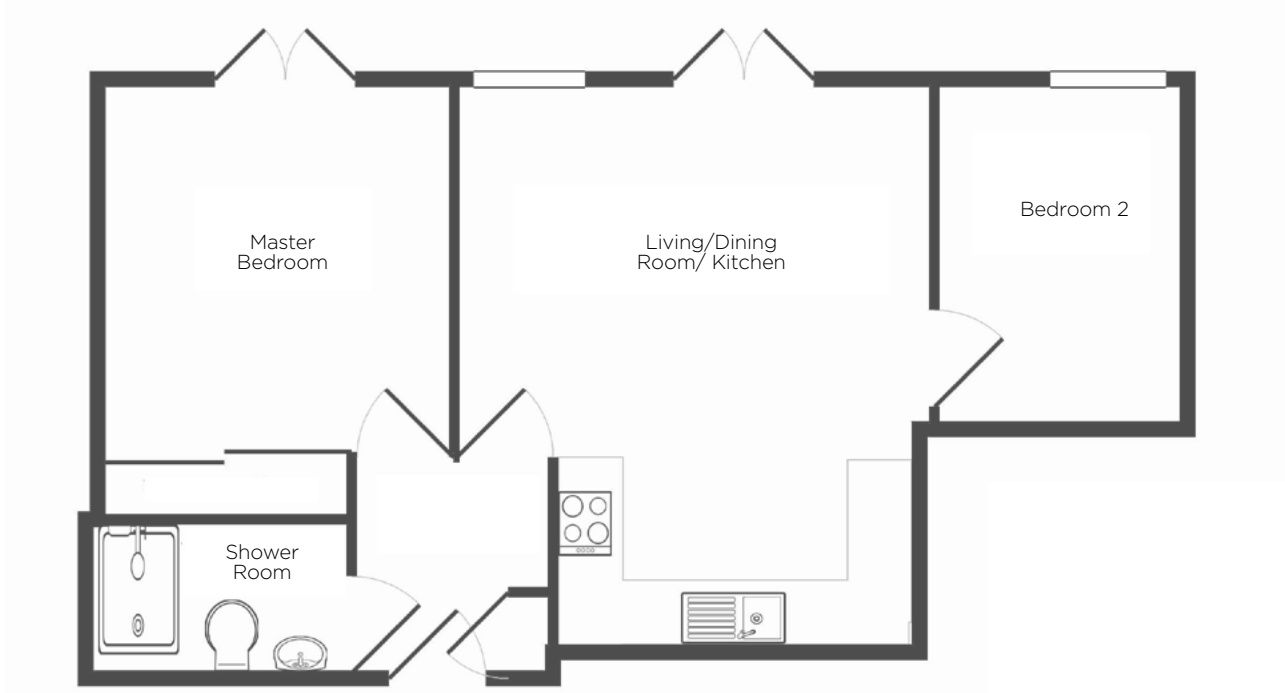


# Audley Willicombe Park

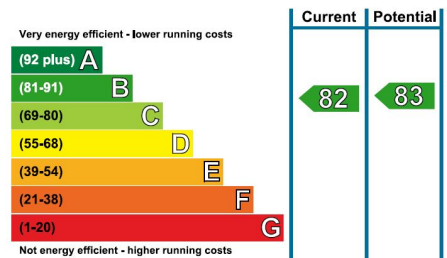
17 Beech Court  
Second Floor Resale Apartment



## Internal Measurements

|                            | Metric (m)    | Imperial (ft)  |
|----------------------------|---------------|----------------|
| Living/Dining Room/Kitchen | 5.30m x 4.50m | 17'6" x 14'8"  |
| Bedroom 2                  | 3.50m x 3.30m | 11'7" x 10'11" |
| Master Bedroom             | 3.30m x 2.40m | 10'8" x 7'9"   |

## Energy Efficiency Rating



Audley Willicombe Park  
Willicombe House, Royal Tunbridge Wells, Kent TN2 3UU  
01892 457996 willicombesales@audleyvillages.co.uk  
www.audleyvillages.co.uk

Built-in wardrobes in bedrooms have not been included in the overall dimensions.  
Maximum measurements shown. These pages are intended for marketing purposes only.  
Designs vary according to plot and all details should be checked at the Sales Office.  
July 2017



# Audley Willicombe Park

17 Beech Court  
Second Floor Resale Apartment



## 2 bed second floor apartment

Newly configured and decorated, this pleasant two bedroom apartment served by lift in popular Beech Court is adjacent to the house which is the hub of the village housing a host of amenities. The accommodation comprises entrance hall, lounge-dining room, newly fitted kitchen with built in appliances, bedroom and bathroom.

Property specifications:

- Stainless steel midrange appliances throughout the kitchen with slimline under counter dishwasher
- New cabinets, doors and laminate work tops with chrome handles
- Laminate flooring in the kitchen and bathrooms.
- Independently metered Combi-Boiler heating system and independent care system with newly certified and rewired electrics

**Price £334,000** (other fees apply)

Monthly Management Fee £868.71

Annual Ground Rent £100

Viewings by appointment with the sales office

Audley Willicombe Park  
Willicombe House, Royal Tunbridge Wells, Kent TN2 3UU  
01892 457996 [willicombesales@audleyvillages.co.uk](mailto:willicombesales@audleyvillages.co.uk)  
[www.audleyvillages.co.uk](http://www.audleyvillages.co.uk)

