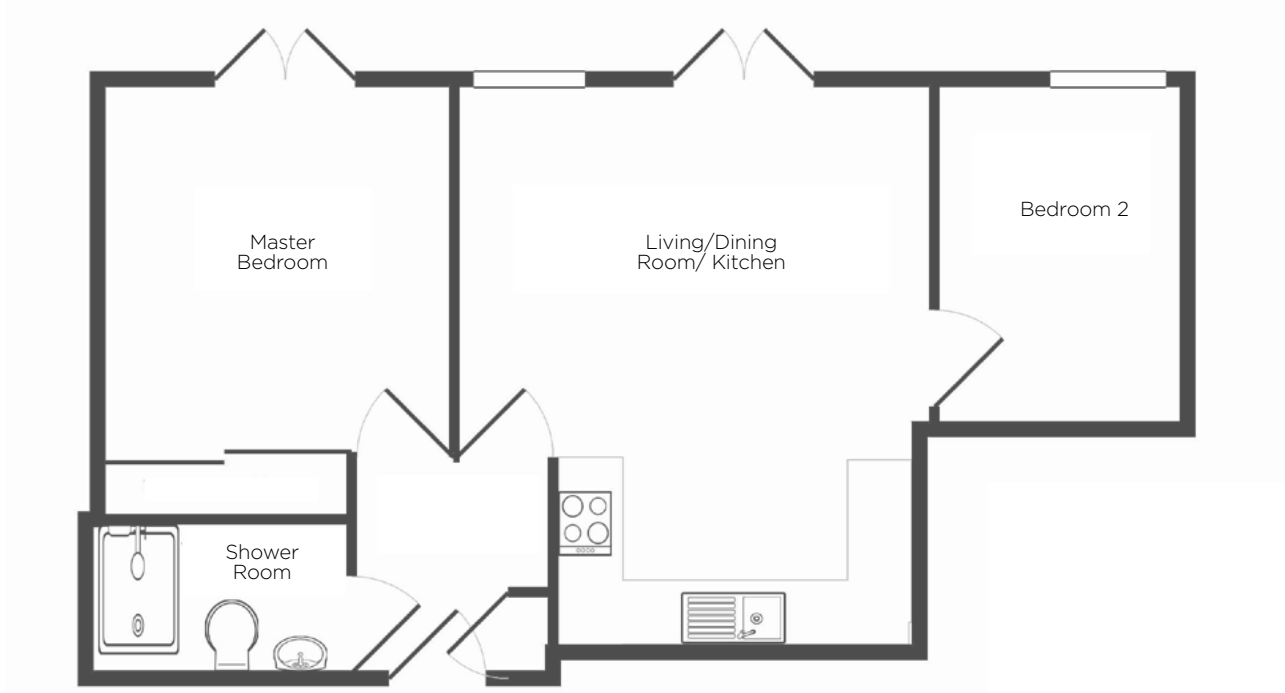


Audley Willicombe Park

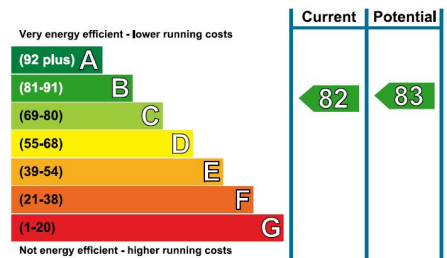
17 Beech Court
Second Floor Resale Apartment



Internal Measurements

	Metric (m)	Imperial (ft)
Living/Dining Room/Kitchen	5.30m x 4.50m	17'6" x 14'8"
Bedroom 2	3.50m x 3.30m	11'7" x 10'11"
Master Bedroom	3.30m x 2.40m	10'8" x 7'9"

Energy Efficiency Rating



Audley Willicombe Park
Willicombe House, Royal Tunbridge Wells, Kent TN2 3UU
01892 457996 willicombesales@audleyvillages.co.uk
www.audleyvillages.co.uk

Built-in wardrobes in bedrooms have not been included in the overall dimensions.
Maximum measurements shown. These pages are intended for marketing purposes only.
Designs vary according to plot and all details should be checked at the Sales Office.
July 2017



Audley Willicombe Park

17 Beech Court
Second Floor Resale Apartment



2 bed second floor apartment

Newly configured and decorated, this pleasant two bedroom apartment served by lift in popular Beech Court is adjacent to the house which is the hub of the village housing a host of amenities. The accommodation comprises entrance hall, lounge-dining room, newly fitted kitchen with built in appliances, bedroom and bathroom.

Property specifications:

- Stainless steel midrange appliances throughout the kitchen with slimline under counter dishwasher
- New cabinets, doors and laminate work tops with chrome handles
- Laminate flooring in the kitchen and bathrooms.
- Independently metered Combi-Boiler heating system and independent care system with newly certified and rewired electrics

Price £334,000 (other fees apply)

Monthly Management Fee £845.87

Annual Ground Rent £100

Viewings by appointment with the sales office

Audley Willicombe Park
Willicombe House, Royal Tunbridge Wells, Kent TN2 3UU
01892 457996 willicombesales@audleyvillages.co.uk
www.audleyvillages.co.uk

