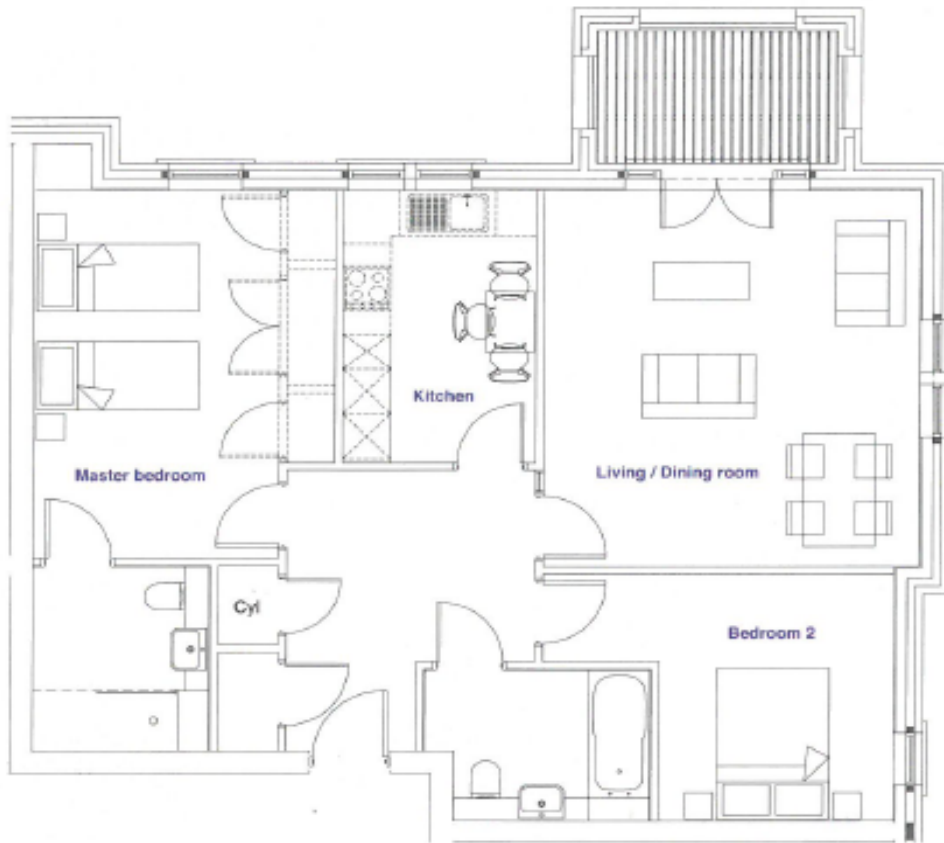
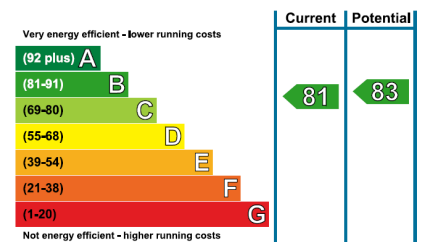


# Audley St Elphin's Park

7 Robinson Court  
Two Bedroom Pre-owned Apartment



| Internal Measurements | Metric (m)    | Imperial (ft)  |
|-----------------------|---------------|----------------|
| Kitchen               | 2.40m x 3.60m | 7'10" x 11'90" |
| Living/Dining Room    | 4.70m x 4.95m | 15'5" x 16'2"  |
| Master Bedroom        | 3.75m x 4.85m | 12'3" x 15'10" |
| Bedroom 2/Dining room | 2.95m x 3.30m | 9'8" x 10'9"   |



Audley St Elphin's Park  
St Elphin's Park, Dale Road South, Darley Dale, Matlock DE4 2RH  
01629 733 337 stelphinssales@audleyvillages.co.uk  
www.audleyvillages.co.uk

Built-in wardrobes in bedrooms have not been included in the overall dimensions.  
Maximum measurements shown. These pages are intended for marketing purposes only.  
Designs vary according to plot and all details should be checked at the Sales Office.  
July 2017



# Audley St Elphin's Park

7 Robinson Court  
Two Bedroom Pre-owned Apartment



## 2 bedroom first floor apartment



This two bedroom property is located in Robinson Court, next to St Elphin's house. The property features luxury Villeroy & Boch bathrooms and has a Siematic kitchen with integrated fridge-freezer, washer-dryer, microwave, cooker and dishwasher.

Property specifications:



- Dual aspect living room with balcony
- SieMatic fitted kitchen with integrated appliances
- Master bedroom with en suite
- Located within close proximity to St Elphin's House and all of its amenities



**Price £315,000** (other fees apply)

Monthly Management Fee £723.36

Annual Ground Rent £250

Viewings by appointment with the sales office

Audley St Elphin's Park  
St Elphin's Park, Dale Road South, Darley Dale, Matlock DE4 2RH  
01629 733 337 [stelphinssales@audleyvillages.co.uk](mailto:stelphinssales@audleyvillages.co.uk)  
[www.audleyvillages.co.uk](http://www.audleyvillages.co.uk)

