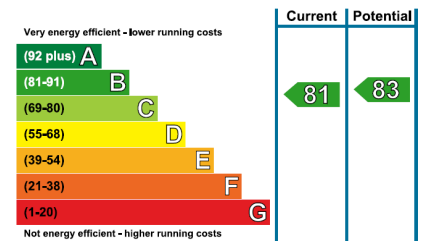
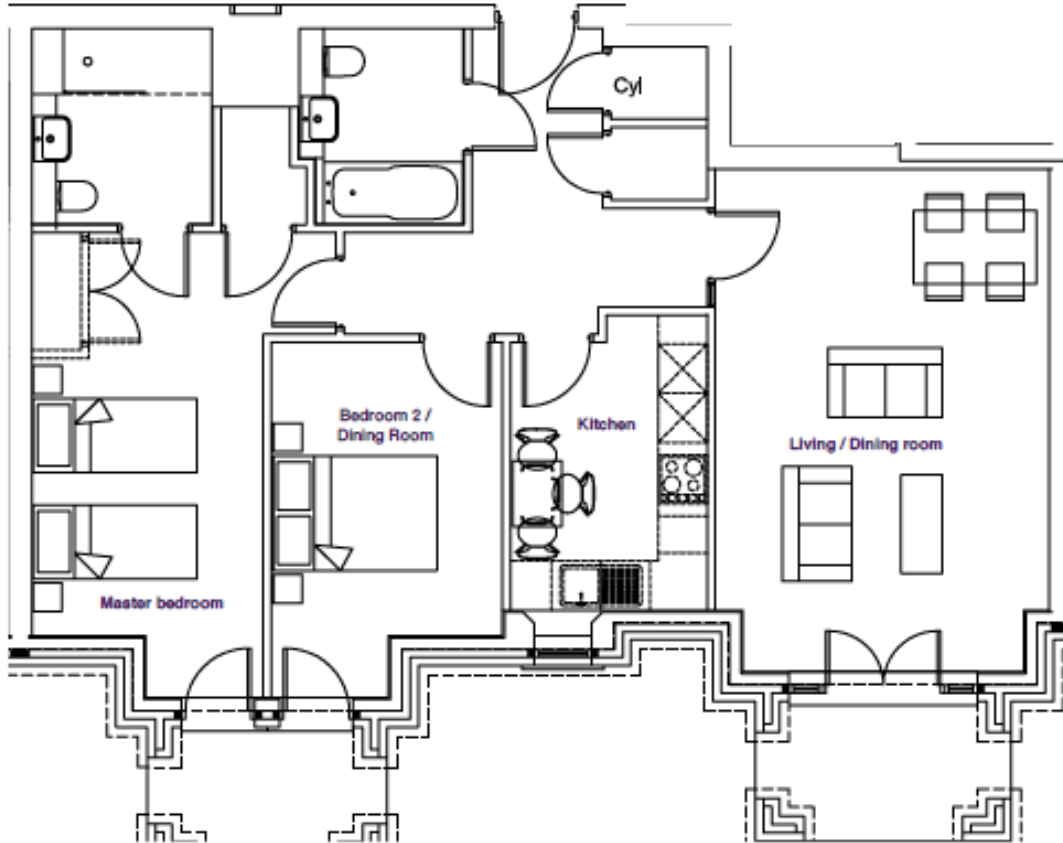


# Audley St Elphin's Park

3 Robinson Court  
Ground Floor Pre-owned Apartment



Internal Measurements	Metric (m)	Imperial (ft)
Kitchen	3.30m x 2.40m	10'9" x 7'10"
Living/Dining Room	4.10m x 6.15m	13'5" x 20'2"
Master Bedroom	2.80m x 4.95m	9'2" x 16'2"
Bedroom 2/Dining room	2.85m x 3.60m	9'4" x 11'9"



Audley St Elphin's Park  
St Elphin's Park, Dale Road South, Darley Dale, Matlock DE4 2RH  
01629 733 337 stelphinssales@audleyvillages.co.uk  
www.audleyvillages.co.uk

Built-in wardrobes in bedrooms have not been included in the overall dimensions.  
Maximum measurements shown. These pages are intended for marketing purposes only.  
Designs vary according to plot and all details should be checked at the Sales Office.  
July 2017

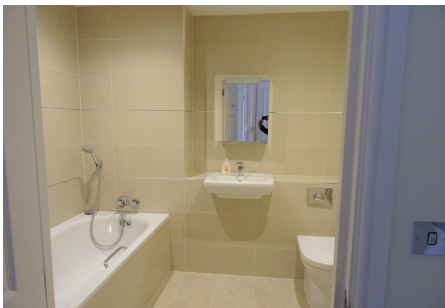


# Audley St Elphin's Park

3 Robinson Court  
Ground Floor Pre-owned Apartment



## 2 bedroom ground floor apartment



This bright south facing two bedroom apartment is located on the ground floor of Robinson Court, next to St Elphin's house. The property features luxury Villeroy & Boch bathrooms and has a Siematic kitchen with integrated fridge-freezer, washer-dryer, microwave, cooker and dishwasher.

Property specifications:



- Living room with French doors leading onto the terrace
- SieMatic fitted kitchen with integrated appliances
- Master bedroom with fitted wardrobes and en suite
- Second bedroom/dining room and separate apartment bathroom
- Underfloor heating
- Allocated Parking space



**Price £339,500** (other fees apply)

Monthly Management Fee £723.23

Annual Ground Rent £250

Viewings by appointment with the sales office

Audley St Elphin's Park  
St Elphin's Park, Dale Road South, Darley Dale, Matlock DE4 2RH  
01629 733 337 [stelphinssales@audleyvillages.co.uk](mailto:stelphinssales@audleyvillages.co.uk)  
[www.audleyvillages.co.uk](http://www.audleyvillages.co.uk)

