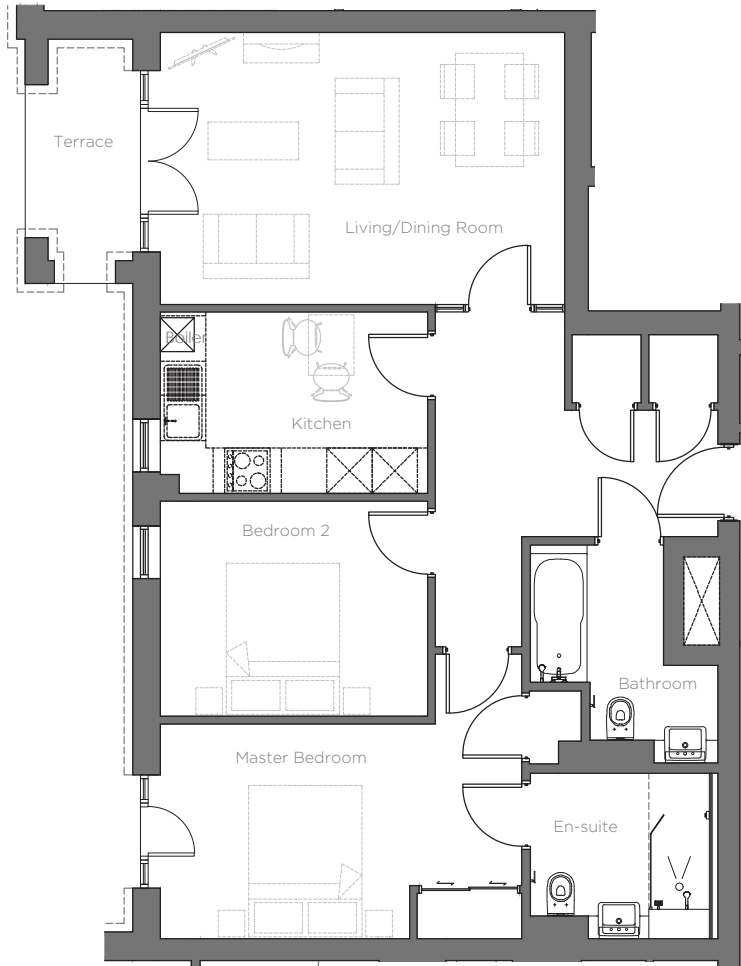
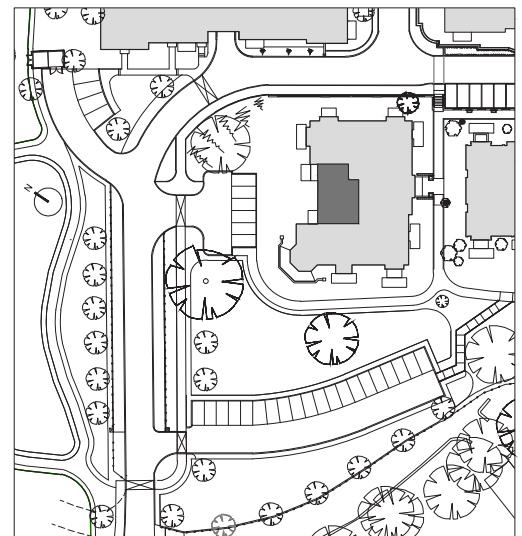
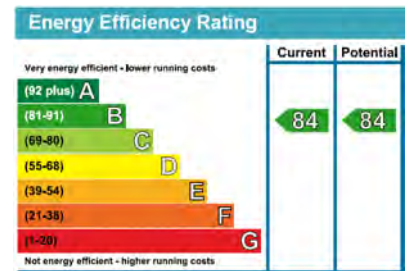


Audley St Elphin's Park

3 Kennedy Court
Ground Floor Pre-owned Apartment



21 August 2014



Internal Measurements	Metric (m)	Imperial (ft)
Living/Dining Room	5.34m x 3.60m	17'6" x 11'10"
Kitchen	3.53m x 2.40m	11'7" x 7'10"
Master Bedroom	4.78m x 2.84m	15'8" x 9'4"
Bedroom 2	3.53m x 2.85m	11'7" x 9'4"
Terrace	3.23m x 1.53m	10'7" x 5'

Audley St Elphin's Park
St Elphin's Park, Dale Road South, Darley Dale, Matlock DE4 2RH
01629 733 337 stelphinssales@audleyvillages.co.uk
www.audleyvillages.co.uk

Built-in wardrobes in bedrooms have not been included in the overall dimensions.
Maximum measurements shown. These pages are intended for marketing purposes only.
Designs vary according to plot and all details should be checked at the Sales Office.
November 2017



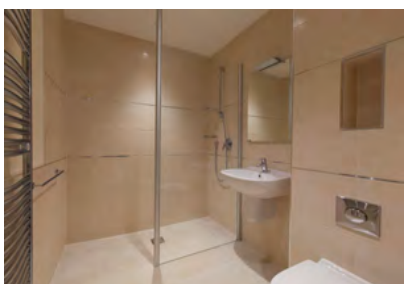
Audley St Elphin's Park

3 Kennedy Court
Ground Floor Pre-owned Apartment



2 bedroom ground floor apartment

This fully redecorated south west facing two bedroom apartment is located on the ground floor of Kennedy Court, close to St Elphin's house. The property has two terraces with hillside and swale views.



Property specifications:

- Upgraded fully fitted SieMatic kitchen with integrated appliances and wall & base gloss doors
- Living/dining room with French doors leading onto the terrace
- Master bedroom with fitted wardrobes with sliding doors, en-suite walk-in shower and door to the terrace
- Second double bedroom and family bathroom
- No chain



Price £325,000 (other fees apply)

Monthly Management Fee £723.36

Annual Ground Rent £500

Viewings by appointment with the sales office

Audley St Elphin's Park
St Elphin's Park, Dale Road South, Darley Dale, Matlock DE4
2RH 01629 733 337 stelphinssales@audleyvillages.co.uk
www.audleyvillages.co.uk

